

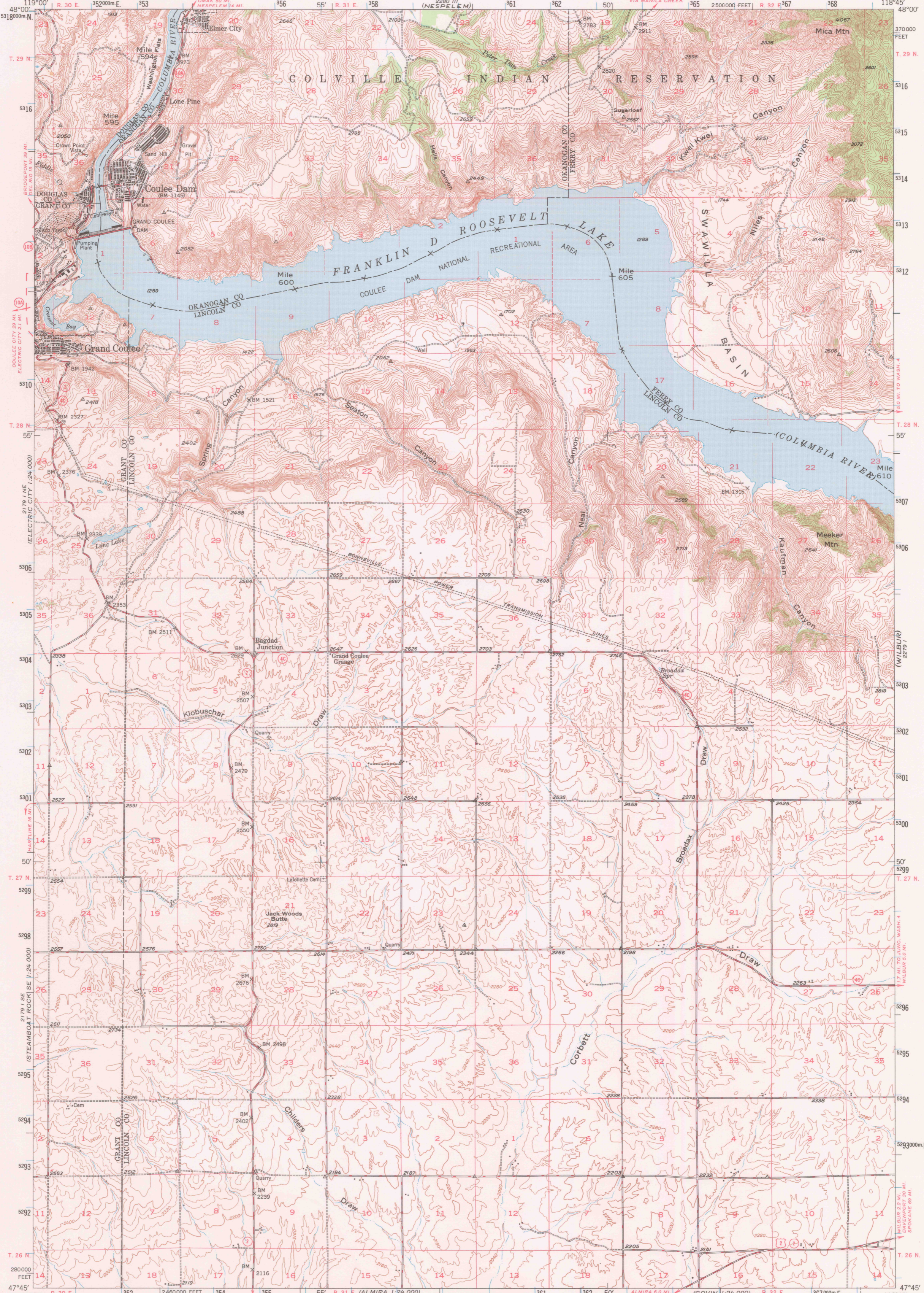
(ALAMEDA FLAT)  
2180 II NE

UNITED STATES  
DEPARTMENT OF THE INTERIOR  
GEOLOGICAL SURVEY

UNITED STATES  
DEPARTMENT OF THE ARMY  
CORPS OF ENGINEERS

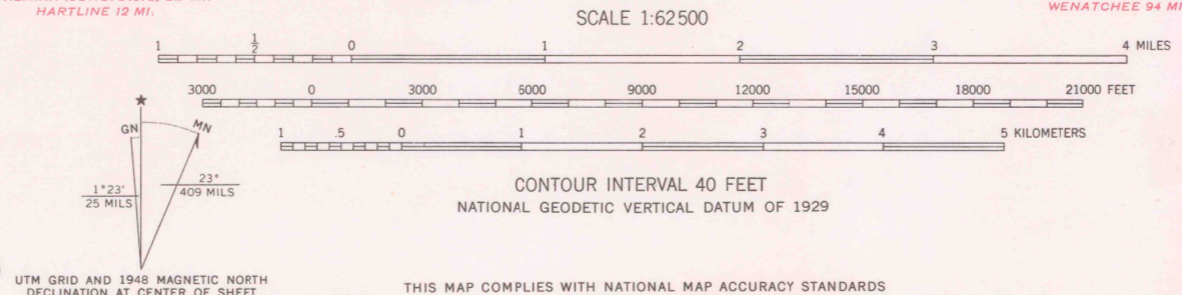
GRAND COULEE DAM QUADRANGLE  
WASHINGTON  
15 MINUTE SERIES (TOPOGRAPHIC)

2890 II (WELLEN)



(HARTLINE 1:24 000)  
2179 I SE

Mapped, edited, and published by the Geological Survey  
Control by USGS, USCG&S, and USBR  
Topography from aerial photographs by multiple methods  
Aerial photographs taken 1946. Field check 1948  
Polyconic projection. 1927 North American datum  
10,000-foot grid based on Washington coordinate system,  
north zone  
1000-meter Universal Transverse Mercator grid ticks,  
zone 11, shown in blue  
Dashed land lines indicate approximate locations  
Franklin D. Roosevelt Lake comprises the Coulee Dam  
National Recreation Area



ROAD CLASSIFICATION  
 HARD-SURFACE ALL WEATHER ROADS DRY WEATHER ROADS  
 Heavy-duty 4 LANE 18 FEET Improved dirt  
 Medium-duty 4 LANE 18 FEET Unimproved dirt  
 Loose-surface, graded, or narrow hard-surface  
 U. S. Route State Route

GRAND COULEE DAM, WASH  
N4745-W11845/15

USGS  
Historical File  
Topographic Division

1948  
AMS 2279 IV-SERIES V791

FEB 18 1978

3800

THIS MAP COMPLIES WITH NATIONAL MAP ACCURACY STANDARDS  
FOR SALE BY U. S. GEOLOGICAL SURVEY, DENVER, COLORADO 80225, OR RESTON, VIRGINIA 22092  
A FOLDER DESCRIBING TOPOGRAPHIC MAPS AND SYMBOLS IS AVAILABLE ON REQUEST  
THIS MAP AVAILABLE WITH OR WITHOUT SHADED RELIEF OVERPRINT