

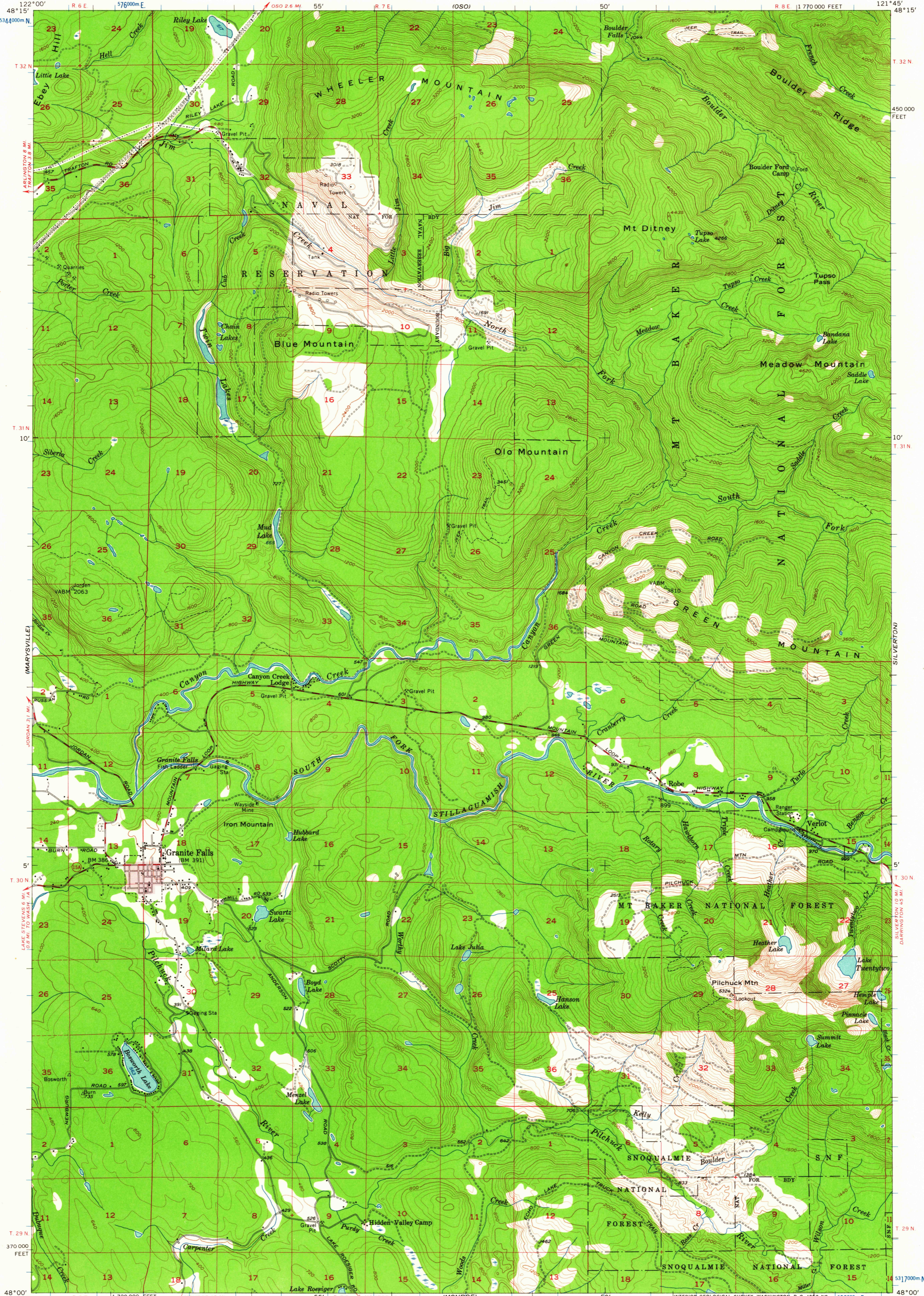
CLEAR LAKE

UNITED STATES
DEPARTMENT OF THE INTERIOR
GEOLOGICAL SURVEY

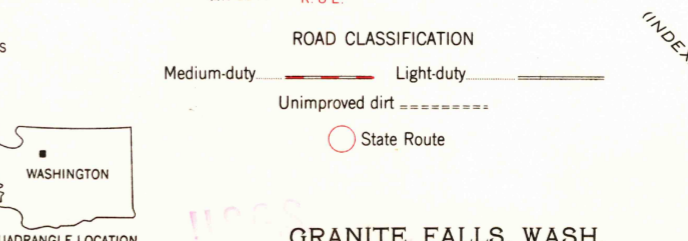
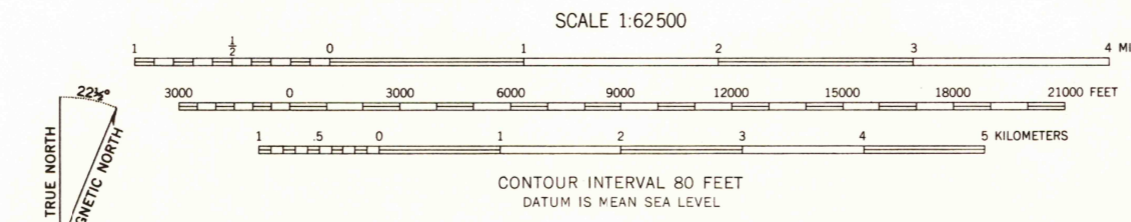
STATE OF WASHINGTON
DEPARTMENT OF CONSERVATION
DIVISION OF MINES AND GEOLOGY

GRANITE FALLS QUADRANGLE
WASHINGTON-SNOHOMISH CO.
15 MINUTE SERIES (TOPOGRAPHIC)

(STILLAGUAMISH)
1:25000



Mapped, edited, and published by the Geological Survey
Control by USGS and USC&GS
Topography from aerial photographs by multiplex methods
Aerial photographs taken 1954. Field check 1956
Polyconic projection. 1927 North American datum
10,000-foot grid based on Washington coordinate system,
north zone
1000-meter Universal Transverse Mercator grid ticks,
zone 10, shown in blue
Red tint indicates areas in which only
landmark buildings are shown
Dashed land lines indicate approximate locations
Unchecked elevations are shown in brown



FOR SALE BY U. S. GEOLOGICAL SURVEY, DENVER 25, COLORADO OR WASHINGTON 25, D. C.
A FOLDER DESCRIBING TOPOGRAPHIC MAPS AND SYMBOLS IS AVAILABLE ON REQUEST

GRANITE FALLS, WASH.
N4800-W12145/15
1956

MAY - 2 1963
4245