

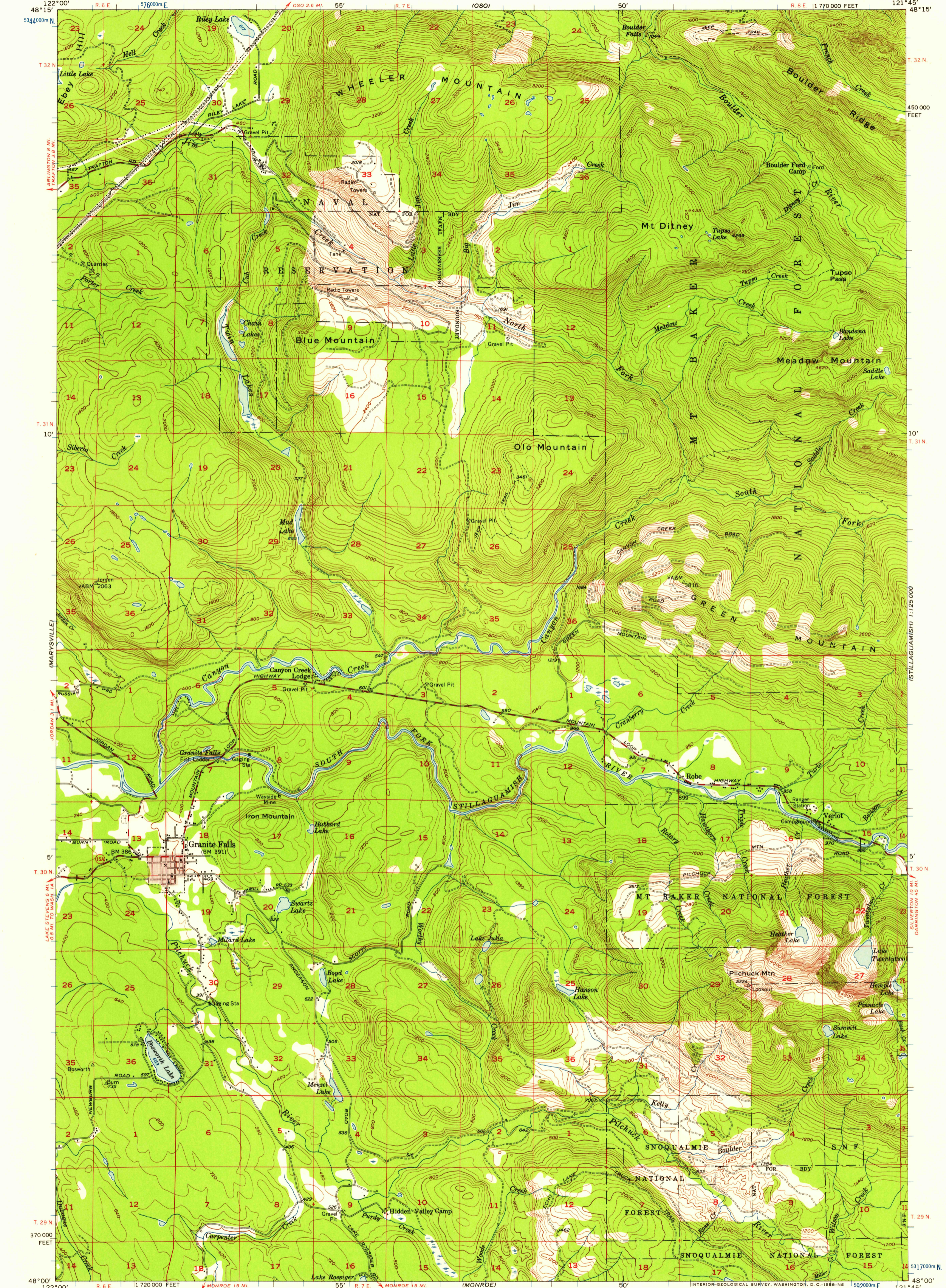
(CLEAR LAKE)

UNITED STATES
DEPARTMENT OF THE INTERIOR
GEOLOGICAL SURVEY

STATE OF WASHINGTON
DEPARTMENT OF CONSERVATION
EARL COE, DIRECTOR
MARSHALL T. HUNTING, SUPERVISOR, DIVISION OF MINES AND GEOLOGY

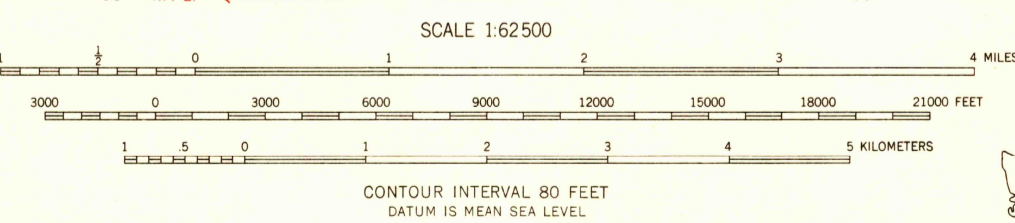
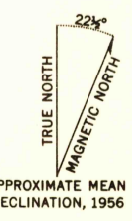
GRANITE FALLS QUADRANGLE
WASHINGTON-SNOHOMISH CO.
15 MINUTE SERIES (TOPOGRAPHIC)

(STILLAGUAMISH)
1:125,000



(EVERETT)

Mapped, edited, and published by the Geological Survey
Control by USGS and USC&GS
Topography from aerial photographs by multiplex methods
Aerial photographs taken 1954. Field check 1956
Polyconic projection. 1927 North American datum
10,000-foot grid based on Washington coordinate system,
north zone
1000-meter Universal Transverse Mercator grid ticks,
zone 10, shown in blue
Red tint indicates areas in which only
landmark buildings are shown
Dashed land lines indicate approximate locations
Unchecked elevations are shown in brown



ROAD CLASSIFICATION
Medium-duty ——— Light-duty ———
Unimproved dirt - - - - -
Slate Route ○

GRANITE FALLS, WASH.
N4800—W12145/15

1956

FOR SALE BY U. S. GEOLOGICAL SURVEY, DENVER 2, COLORADO OR WASHINGTON 25, D. C.
A FOLDER DESCRIBING TOPOGRAPHIC MAPS AND SYMBOLS IS AVAILABLE ON REQUEST

U.S.G.S.
FILE COPY
TOPOGRAPHIC DIVISION

JUL 15 1956

2490