

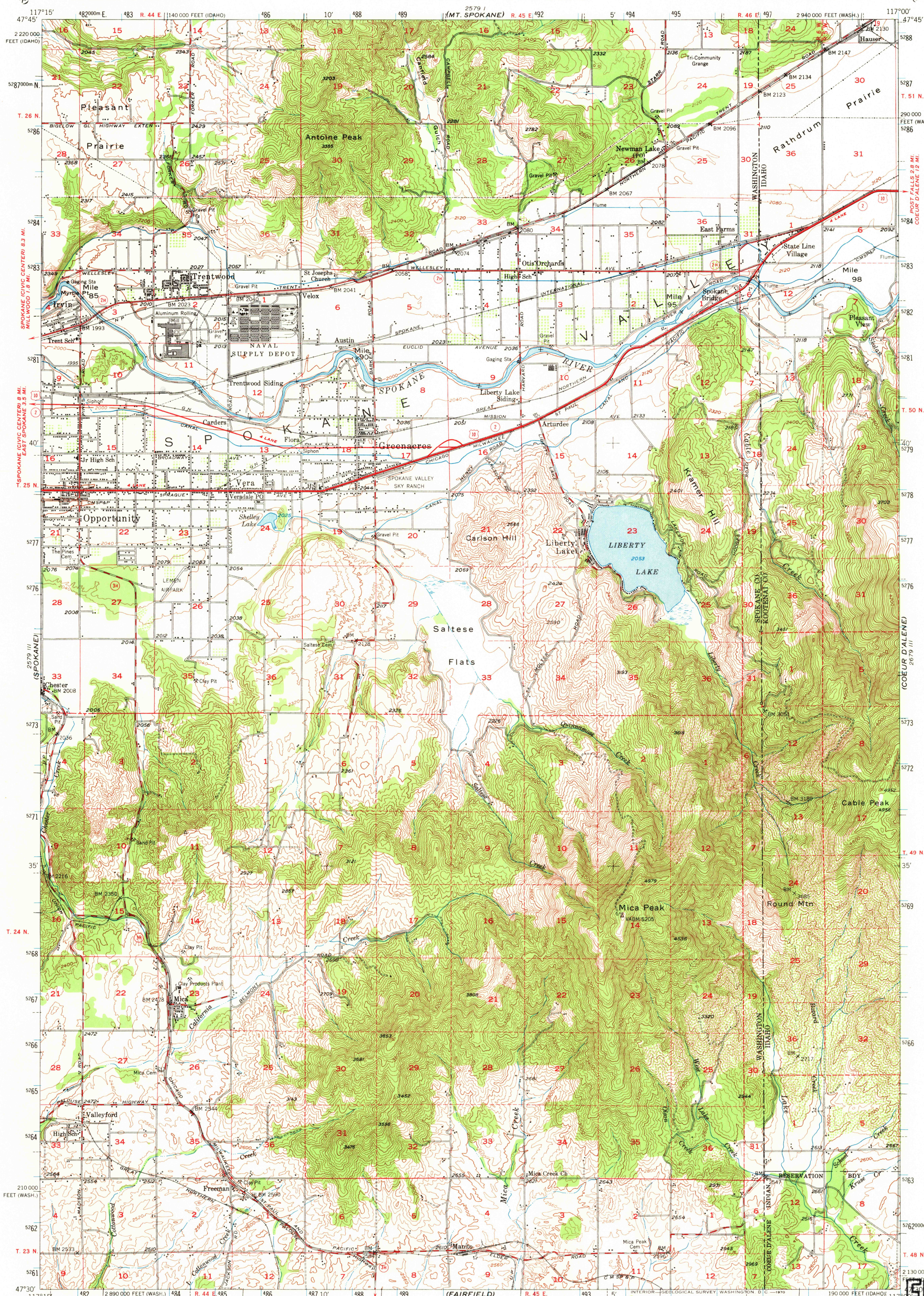
2579 IV  
(OGER PARK)

UNITED STATES  
DEPARTMENT OF THE INTERIOR  
GEOLOGICAL SURVEY

STATE OF WASHINGTON  
DEPARTMENT OF CONSERVATION AND DEVELOPMENT

GREENACRES QUADRANGLE  
WASHINGTON-IDAHO  
15 MINUTE SERIES (TOPOGRAPHIC)

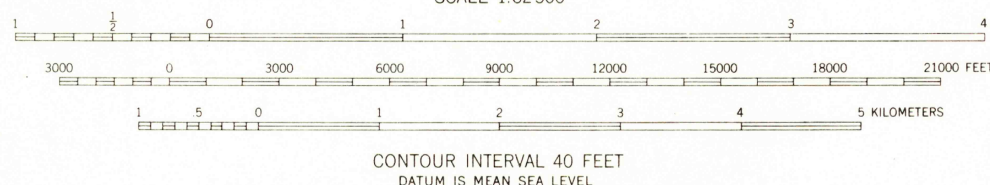
2579 IV  
(SPIRIT LAKE)



(SPANGLE)  
2578 IV

Mapped, edited, and published by the Geological Survey  
Control by USGS and USC&GS  
Topography from aerial photographs by multiplex methods  
Aerial photographs taken 1946. Field check 1949  
Polyconic projection. 1927 North American datum  
10,000-foot grid based on Washington coordinate system,  
north zone, and Idaho coordinate system, west zone  
1000-meter Universal Transverse Mercator grid ticks,  
zone 11, shown in blue  
Dashed land lines indicate approximate location

UTM GRID AND 1949 MAGNETIC NORTH  
DECLINATION AT CENTER OF SHEET



THIS MAP COMPLIES WITH NATIONAL MAP ACCURACY STANDARDS  
FOR SALE BY U. S. GEOLOGICAL SURVEY, DENVER, COLORADO 80225 OR WASHINGTON, D. C. 20242  
A FOLDER DESCRIBING TOPOGRAPHIC MAPS AND SYMBOLS IS AVAILABLE ON REQUEST



ROAD CLASSIFICATION  
Heavy-duty ——— Light-duty ———  
Medium-duty ——— Unimproved dirt ———  
U. S. Route ——— State Route ———

GREENACRES, WASH-IDAHO  
N4730-W11700/15

1949  
AMS 2579 II-SERIES V791

U.S.G.S.  
FILE COPY  
TOPOGRAPHIC DIVISION

3000  
OCT 13 1969