

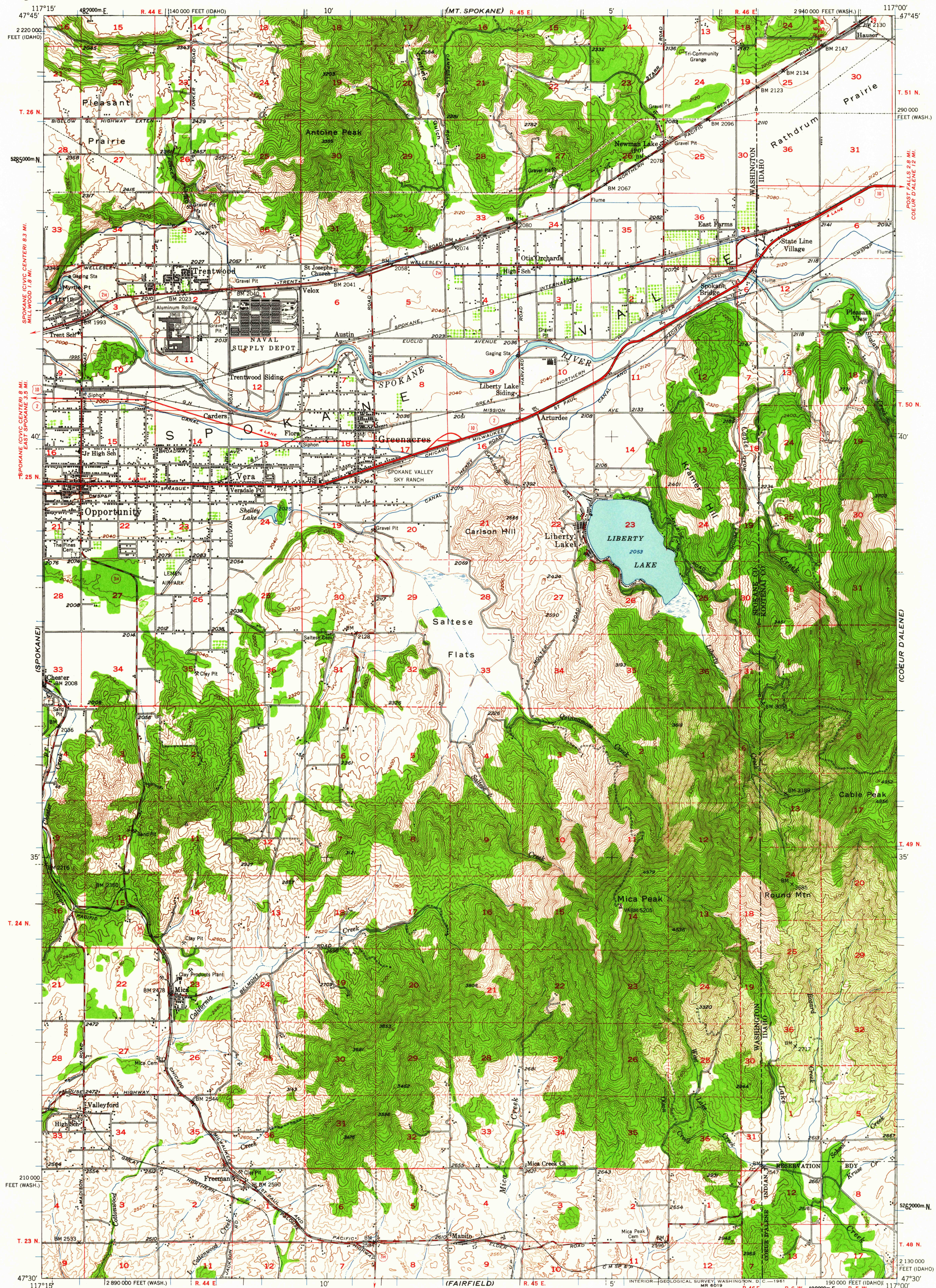
(DEER PARK)

UNITED STATES
DEPARTMENT OF THE INTERIOR
GEOLOGICAL SURVEY

STATE OF WASHINGTON
DEPARTMENT OF CONSERVATION AND DEVELOPMENT

GREENACRES QUADRANGLE
WASHINGTON-IDAHO
15 MINUTE SERIES (TOPOGRAPHIC)

(RATHDRUM)



(SPANGLE)

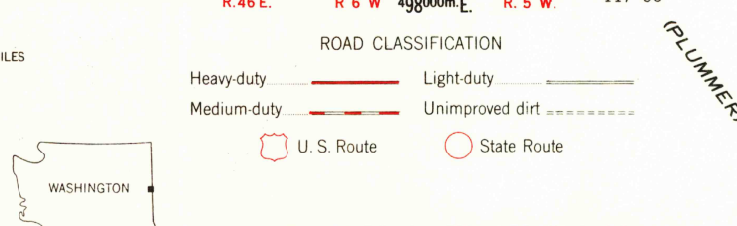
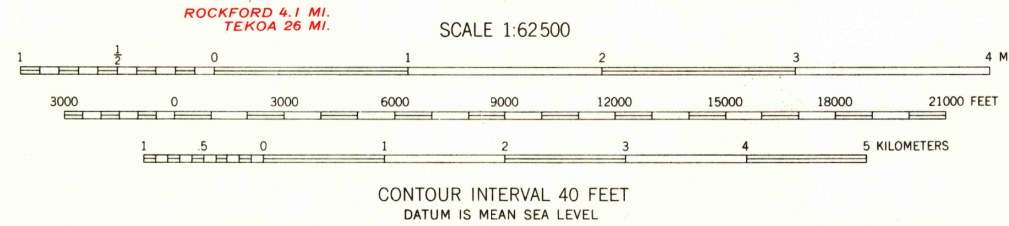
Mapped, edited, and published by the Geological Survey
Control by USGS and USC&GS

Topography from aerial photographs by multiplex methods
Aerial photographs taken 1946. Field check 1949

Polyconic projection. 1927 North American datum
10,000-foot grid based on Washington coordinate system,
north zone, and Idaho coordinate system, west zone
1000-meter Universal Transverse Mercator grid ticks,
zone 11, shown in blue

Dashed land lines indicate approximate location

TRUE NORTH
MAGNETIC NORTH
APPROXIMATE MEAN
DECLINATION, 1949



GREENACRES, WASH.-IDAHO
N4730-W11700/15

1949

THIS MAP COMPLIES WITH NATIONAL MAP ACCURACY STANDARDS
FOR SALE BY U.S. GEOLOGICAL SURVEY, DENVER 25, COLORADO OR WASHINGTON 25, D. C.
A FOLDER DESCRIBING TOPOGRAPHIC MAPS AND SYMBOLS IS AVAILABLE ON REQUEST

USGS
FILE COPY
TOPOGRAPHIC DIVISION

AUG 15 1961

2515