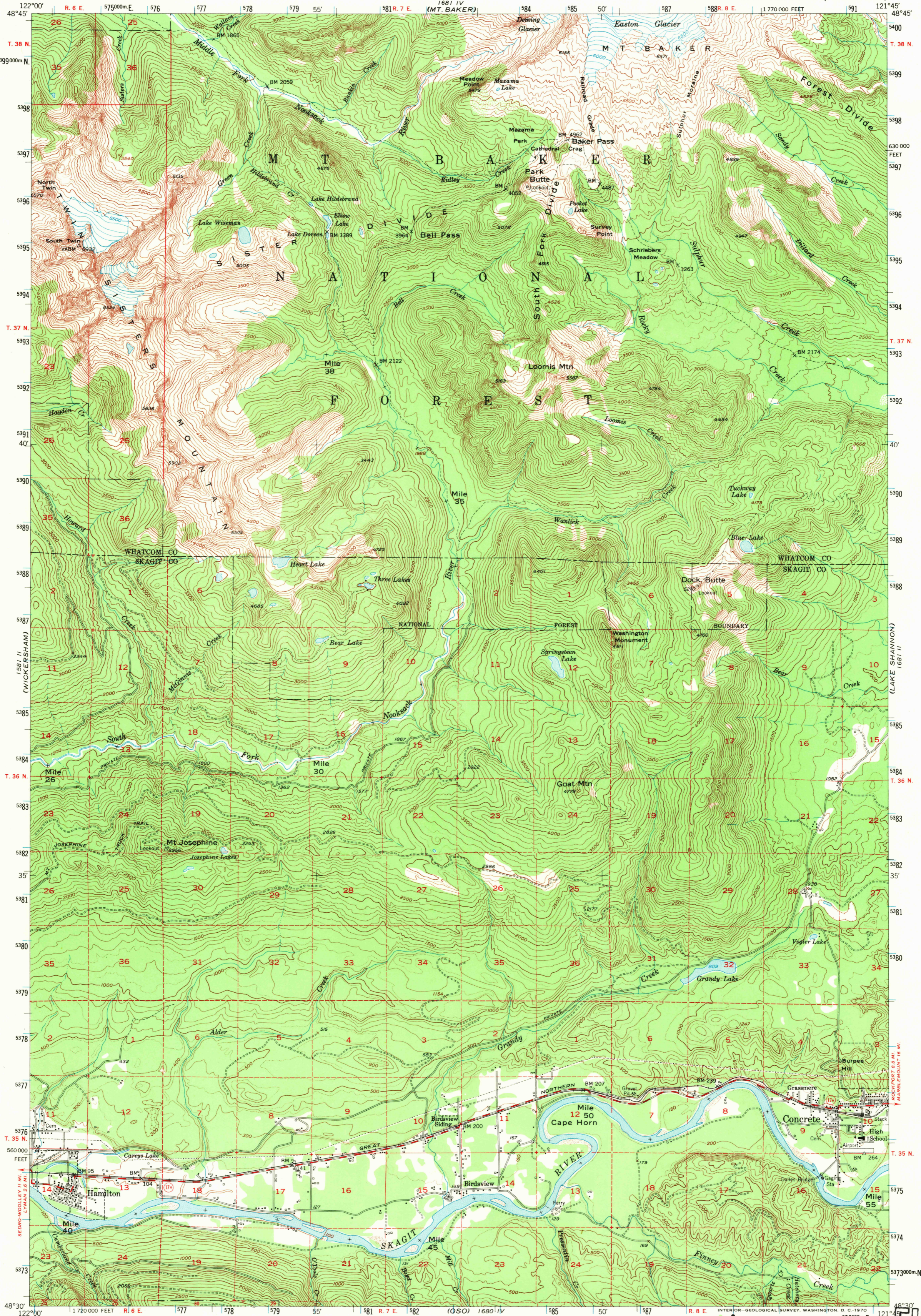


1681 I  
(VAN ZANDT)

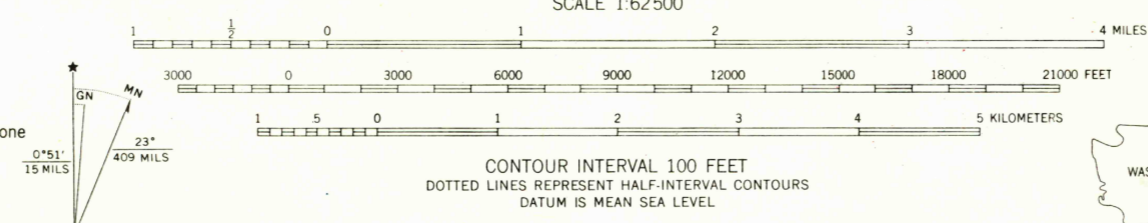
UNITED STATES  
DEPARTMENT OF THE INTERIOR  
GEOLOGICAL SURVEY

HAMILTON QUADRANGLE  
WASHINGTON  
15 MINUTE SERIES (TOPOGRAPHIC)

1681 I  
(MT. SHUKSAN)



Mapped, edited, and published by the Geological Survey  
Control by USGS and USC&GS  
Topography from aerial photographs by multiplex methods  
Aerial photographs taken 1947. Field check 1952  
Polyconic projection. 1927 North American datum  
10,000-foot grid based on Washington coordinate system, north zone  
Dashed land lines indicate approximate locations  
Unchecked elevations are shown in brown  
1000-meter Universal Transverse Mercator grid ticks,  
zone 10, shown in blue



ROAD CLASSIFICATION  
Medium-duty ——— Light-duty ———  
Unimproved dirt - - - - -  
State Route ○



HAMILTON, WASH.  
N4830-W12145/15

1952

AMS 1681 III—SERIES V791

THIS MAP COMPLIES WITH NATIONAL MAP ACCURACY STANDARDS  
FOR SALE BY U. S. GEOLOGICAL SURVEY, DENVER, COLORADO 80225 OR WASHINGTON, D. C. 20242  
A FOLDER DESCRIBING TOPOGRAPHIC MAPS AND SYMBOLS IS AVAILABLE ON REQUEST

U.S.G.S.  
FILE COPY  
TOPOGRAPHIC DIVISION

3250

DEC 15 1969