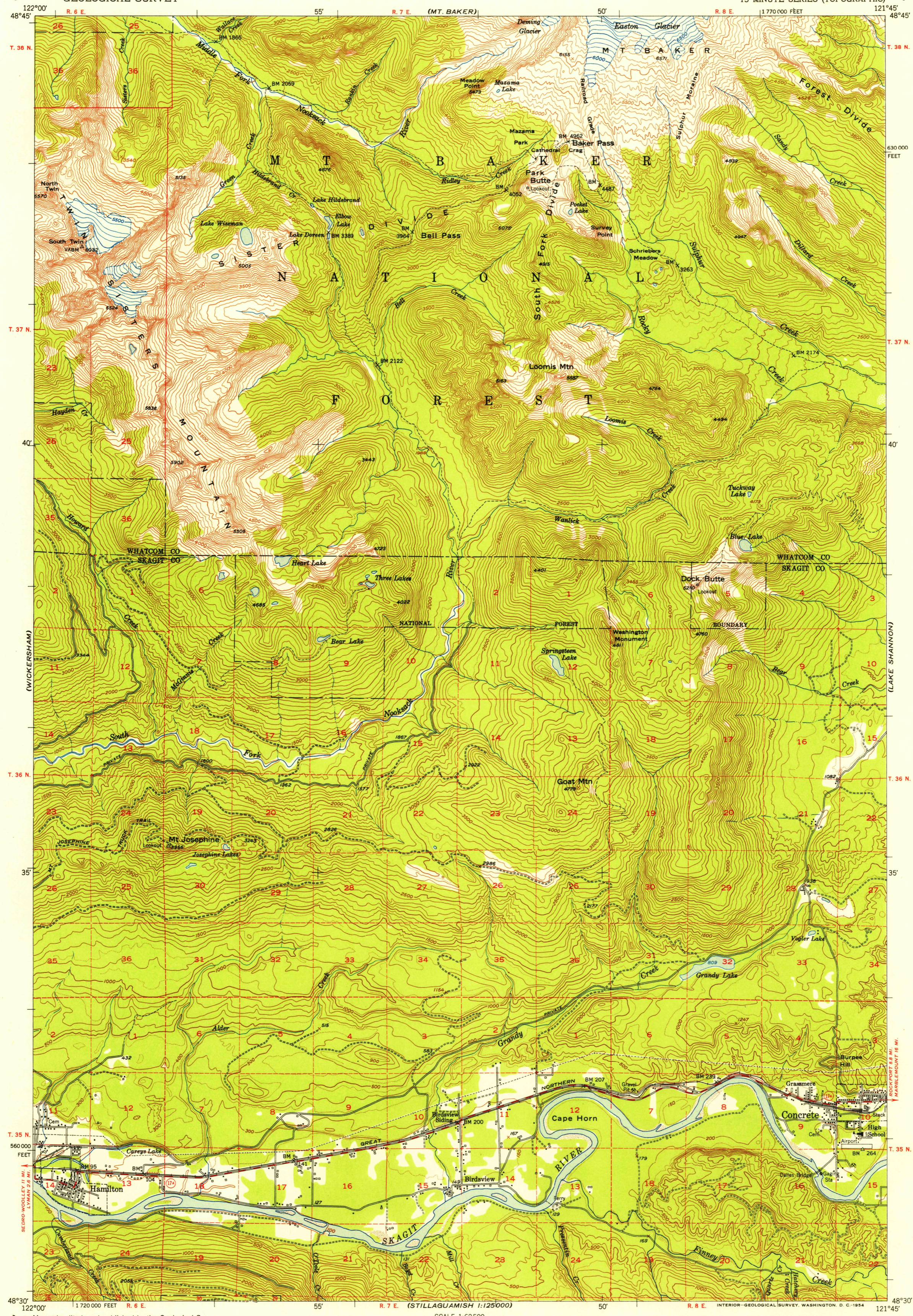


(VAN ZANDT)

UNITED STATES  
DEPARTMENT OF THE INTERIOR  
GEOLOGICAL SURVEY

HAMILTON QUADRANGLE  
WASHINGTON  
15 MINUTE SERIES (TOPOGRAPHIC)

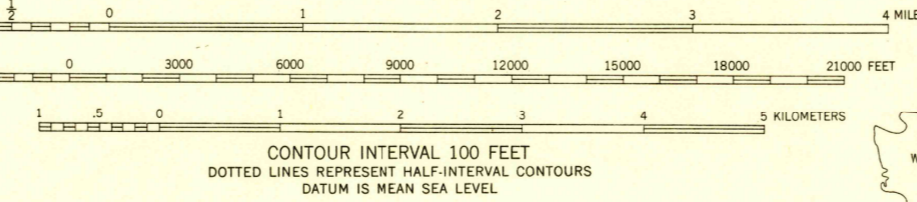
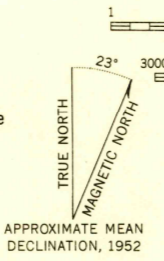
(MT. SHUKSAN)



FILE COPY

(CLEAR LAKE)

Mapped, edited, and published by the Geological Survey  
Control by USGS and USC&GS  
Topography from aerial photographs by multiplex methods  
Aerial photographs taken 1947. Field check 1952  
Polyconic projection. 1927 North American datum  
10,000-foot grid based on Washington coordinate system, north zone  
Dashed land lines indicate approximate locations  
Unchecked elevations are shown in brown



ROAD CLASSIFICATION

Heavy-duty	4 LANE 6 LANE	Light-duty
Medium-duty	4 LANE 6 LANE	Unimproved dirt

U.S. Route      State Route

HAMILTON, WASH.  
N4830-W12145/15

1952

THIS MAP COMPLIES WITH NATIONAL MAP ACCURACY STANDARDS  
FOR SALE BY U. S. GEOLOGICAL SURVEY, FEDERAL CENTER, DENVER, COLORADO OR WASHINGTON 25, D. C.  
A FOLDER DESCRIBING TOPOGRAPHIC MAPS AND SYMBOLS IS AVAILABLE ON REQUEST

FILE COPY

MAR 22 1954

2630