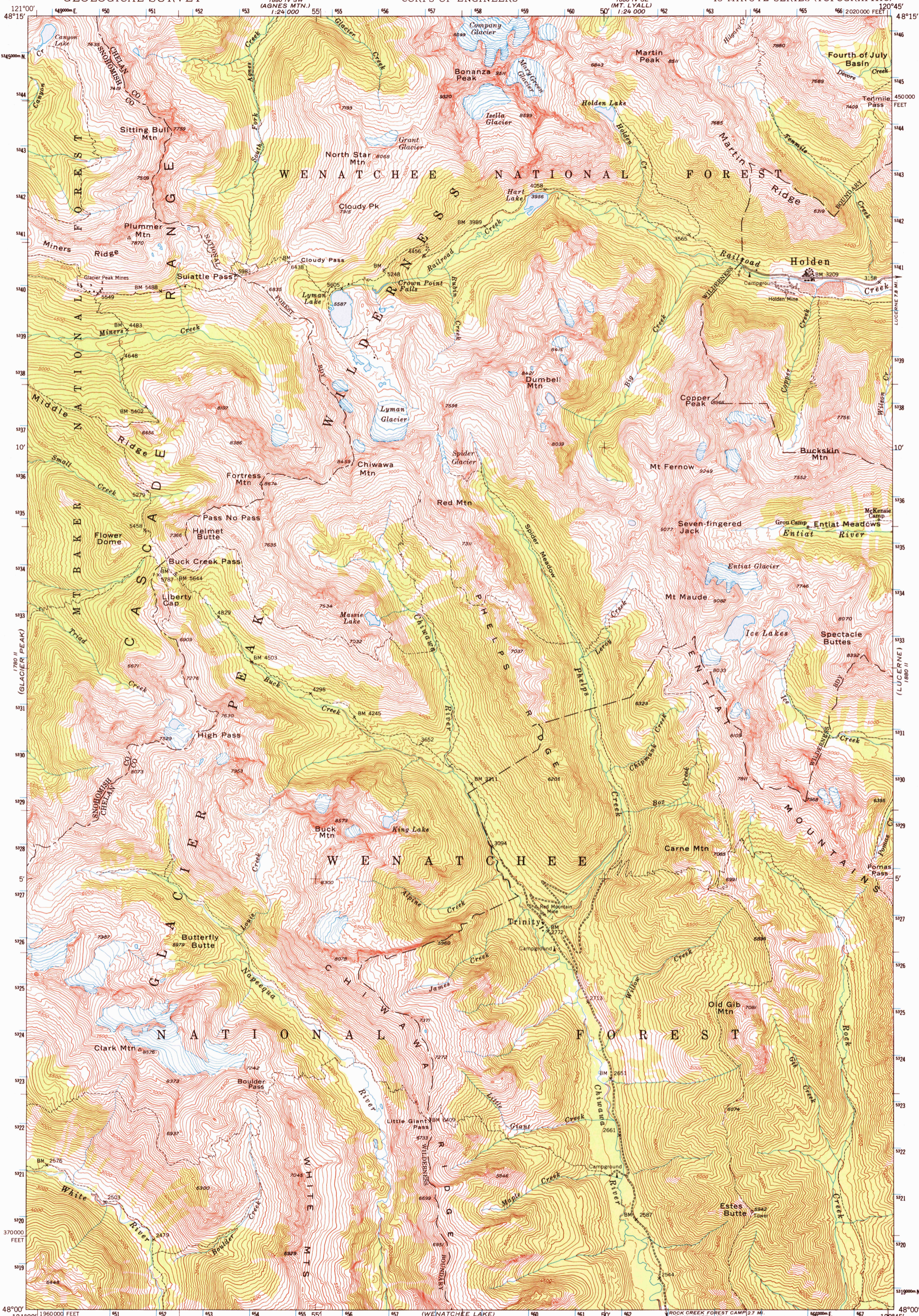
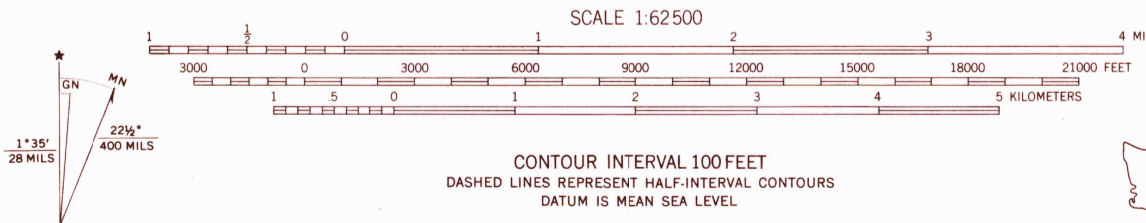


1770 LF ME (POLE MTN.) 1:24,000



Mapped, edited, and published by the Geological Survey
Control by USGS and USC&GS
Topography by photogrammetric methods from aerial photographs taken 1944
Polyconic projection. 1927 North American datum
10,000 foot grid based on Washington coordinate system, north zone
1000-meter Universal Transverse Mercator grid ticks, zone 10, shown in blue
Land lines have not been established in this area



ROAD CLASSIFICATION 1967

Light-duty	Unimproved dirt
------------	-----------------



HOLDEN, WASH.
N4800-W12045/15
1944
MINOR CORRECTIONS MADE 1968
AMS 1880 III-SERIES V791

U.S.G.S.
FILE COPY
TOPOGRAPHIC DIVISION

13965

FEB 14 1969

THIS MAP IS AVAILABLE WITH OR WITHOUT SHADED RELIEF
FOR SALE BY U. S. GEOLOGICAL SURVEY, DENVER, COLORADO 80225 OR WASHINGTON, D. C. 20242
A FOLDER DESCRIBING TOPOGRAPHIC MAPS AND SYMBOLS IS AVAILABLE ON REQUEST