

(TWIN LAKES)
2890 N. W. 124 000
KELLER (UNCL. WASH. 41 39 MI. NINE MILE 4.5 MI.)
DAVENPORT (UNCL. U.S. 21 33 MI. MILES 11 MI.)
LINCOLN)
259 171

UNITED STATES
DEPARTMENT OF THE INTERIOR
GEOLOGICAL SURVEY

28 MI. TO U.S. 395
INCHELIUM 4.5 MI.

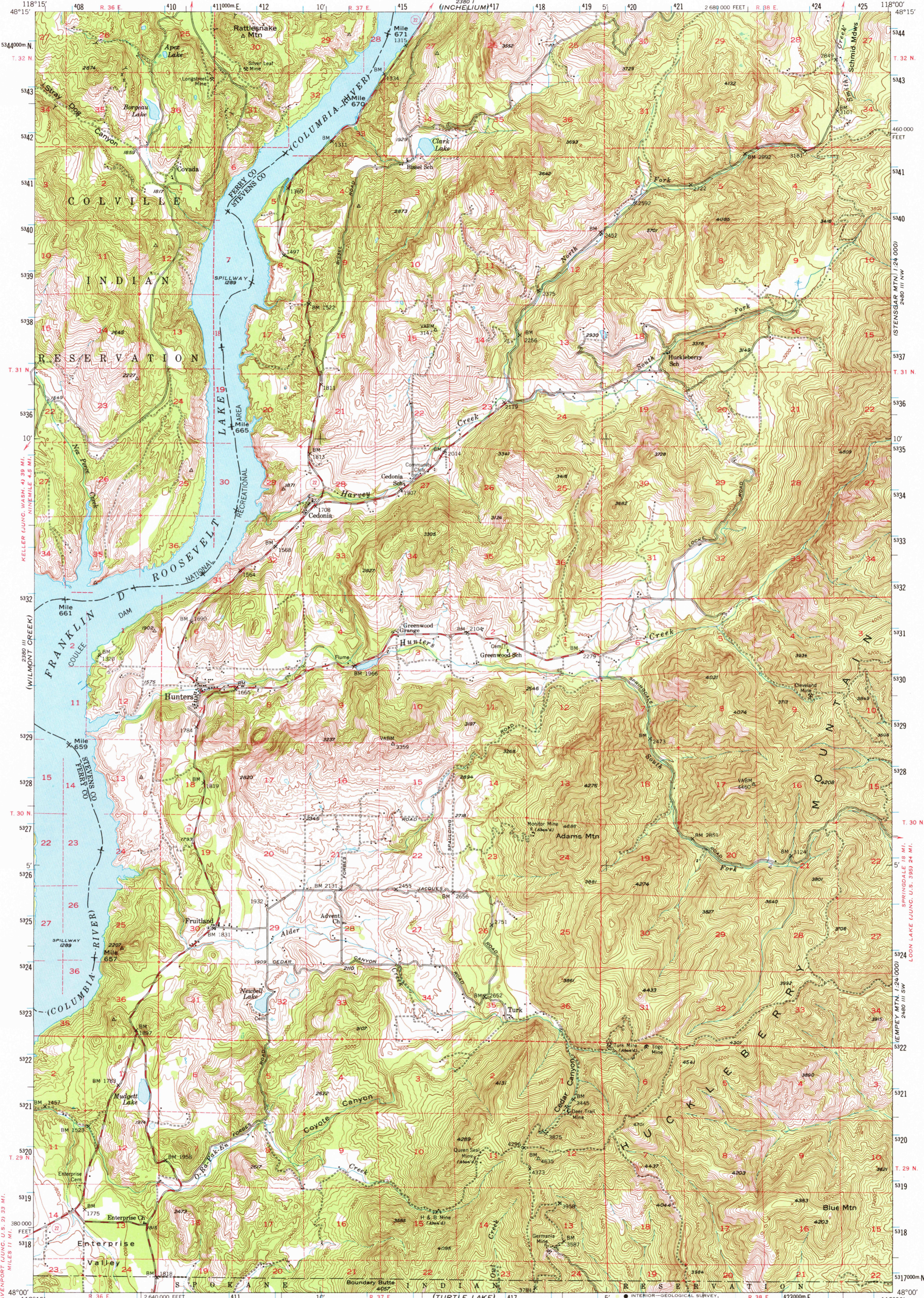
UNITED STATES
DEPARTMENT OF THE ARMY
CORPS OF ENGINEERS

25 MI. TO U.S. 395
GIFFORD 4.1 MI.
INCHELIUM 4.1

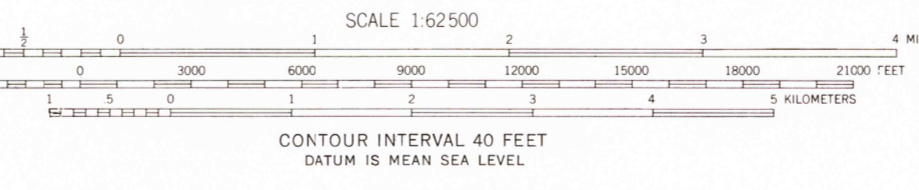
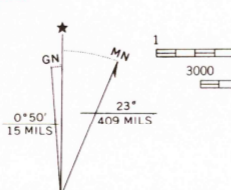
HUNTERS QUADRANGLE
WASHINGTON
15 MINUTE SERIES (TOPOGRAPHIC)

COLVILLE 26 MI.
ADDY (UNCL. U.S. 395) 12 MI.

2890 N. W. 124 000
LUNN MOUNTAIN



Mapped, edited, and published by the Geological Survey
Control by USGS, USC&GS, and USBR
Topography from aerial photographs by multiplex methods
Aerial photographs taken 1946. Field check 1948
Polyconic projection. 1927 North American datum
10,000-foot grid based on Washington coordinate system,
north zone.
Dashed land lines indicate approximate location
Franklin D. Roosevelt Lake comprises the Coulee Dam
National Recreation Area
1000 meter Universal Transverse Mercator grid ticks,
zone 11, shown in blue



ROAD CLASSIFICATION
Medium-duty — Light-duty
Unimproved dirt —
State Route

THIS MAP COMPLIES WITH NATIONAL MAP ACCURACY STANDARDS
FOR SALE BY U. S. GEOLOGICAL SURVEY, DENVER, COLORADO 80225 OR WASHINGTON, D. C. 20242
A FOLDER DESCRIBING TOPOGRAPHIC MAPS AND SYMBOLS IS AVAILABLE ON REQUEST

HUNTERS, WASH.
N4800-W11800/15
1948

AMS 2380 II—SERIES V791