

(TWIN LAKES)

UNITED STATES
DEPARTMENT OF THE INTERIOR
GEOLOGICAL SURVEY

28 MI. TO U.S. 395
INCHELIUM 4.5 MI.

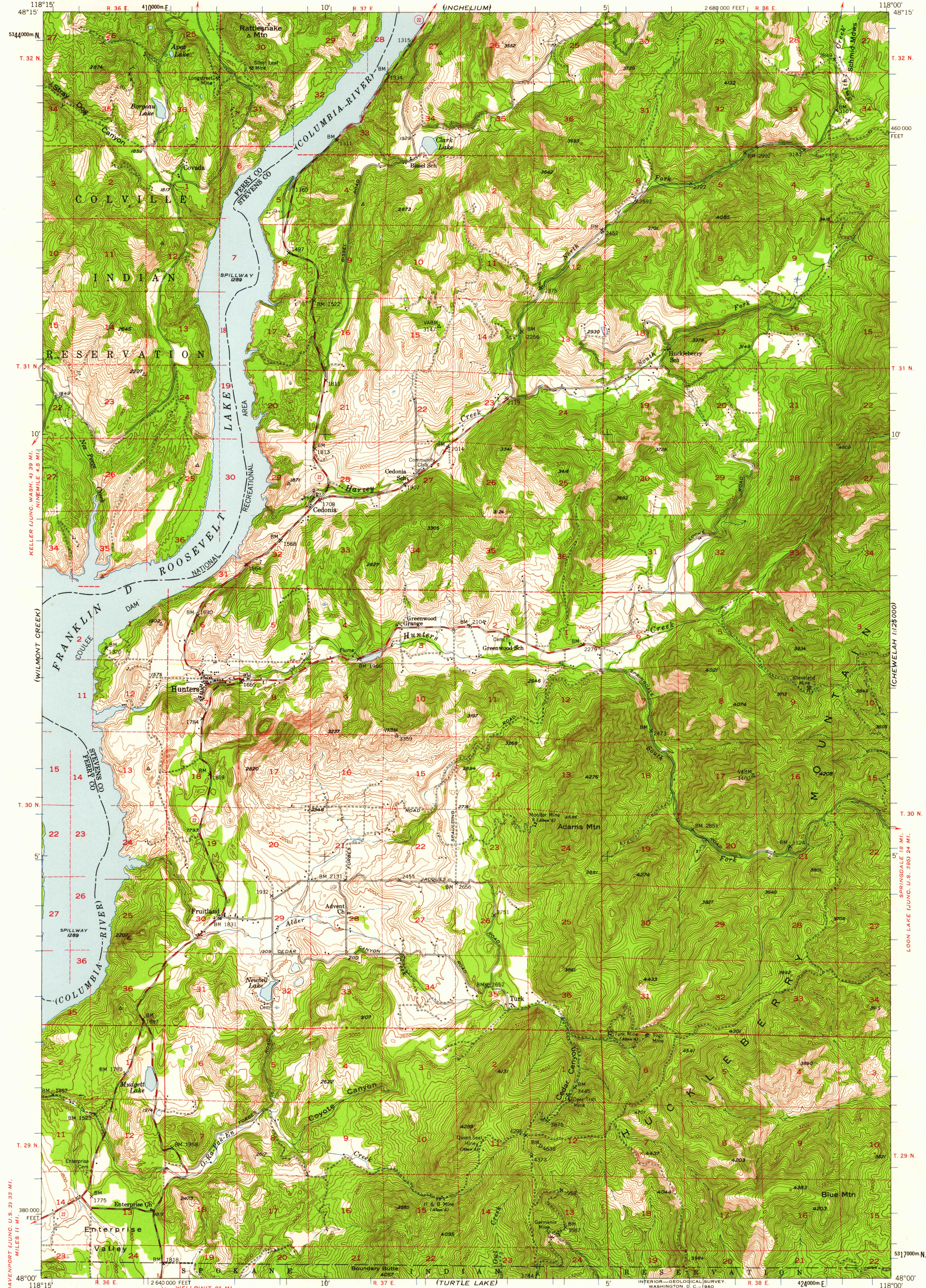
UNITED STATES
DEPARTMENT OF THE ARMY
CORPS OF ENGINEERS

25 MI. TO U.S. 395
GIFFORD 4.1 MI.

HUNTERS QUADRANGLE
WASHINGTON
15 MINUTE SERIES (TOPOGRAPHIC)

COLVILLE 26 MI.
ADDY (JUNG. U.S. 395) 12 MI.

(CHEWELAH 1:25000)



(LINCOLN)

Mapped, edited, and published by the Geological Survey

Control by USGS, USC&GS, and USBR

Topography from aerial photographs by multiplex methods

Aerial photographs taken 1946. Field check 1948

Polyconic projection. 1927 North American datum

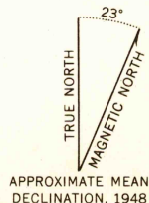
10,000-foot grid based on Washington coordinate system, north zone.

Dashed land lines indicate approximate location

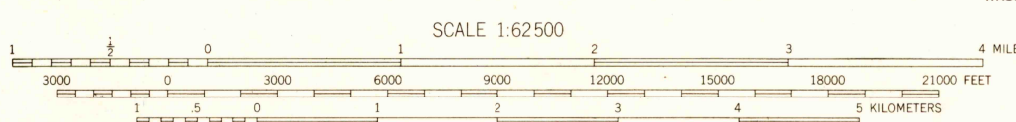
Franklin D. Roosevelt Lake comprises the Coulee Dam

National Recreation Area

1000 meter Universal Transverse Mercator grid ticks, zone 11, shown in blue



APPROXIMATE MEAN DECLINATION, 1948



SCALE 1:62500

CONTOUR INTERVAL 40 FEET

DATUM IS MEAN SEA LEVEL

THIS MAP COMPLIES WITH NATIONAL MAP ACCURACY STANDARDS
FOR SALE BY U. S. GEOLOGICAL SURVEY, DENVER 25, COLORADO OR WASHINGTON 25, D. C.
A FOLDER DESCRIBING TOPOGRAPHIC MAPS AND SYMBOLS IS AVAILABLE ON REQUEST



QUADRANGLE LOCATION

ROAD CLASSIFICATION
Medium-duty ——— Light-duty ———
Unimproved dirt ———
State Route ———

HUNTERS, WASH.

N4800-W11800/15

1948

U.S.G.S.
FILE COPY
TOPOGRAPHIC DIVISION

FEB 11 1960

2455