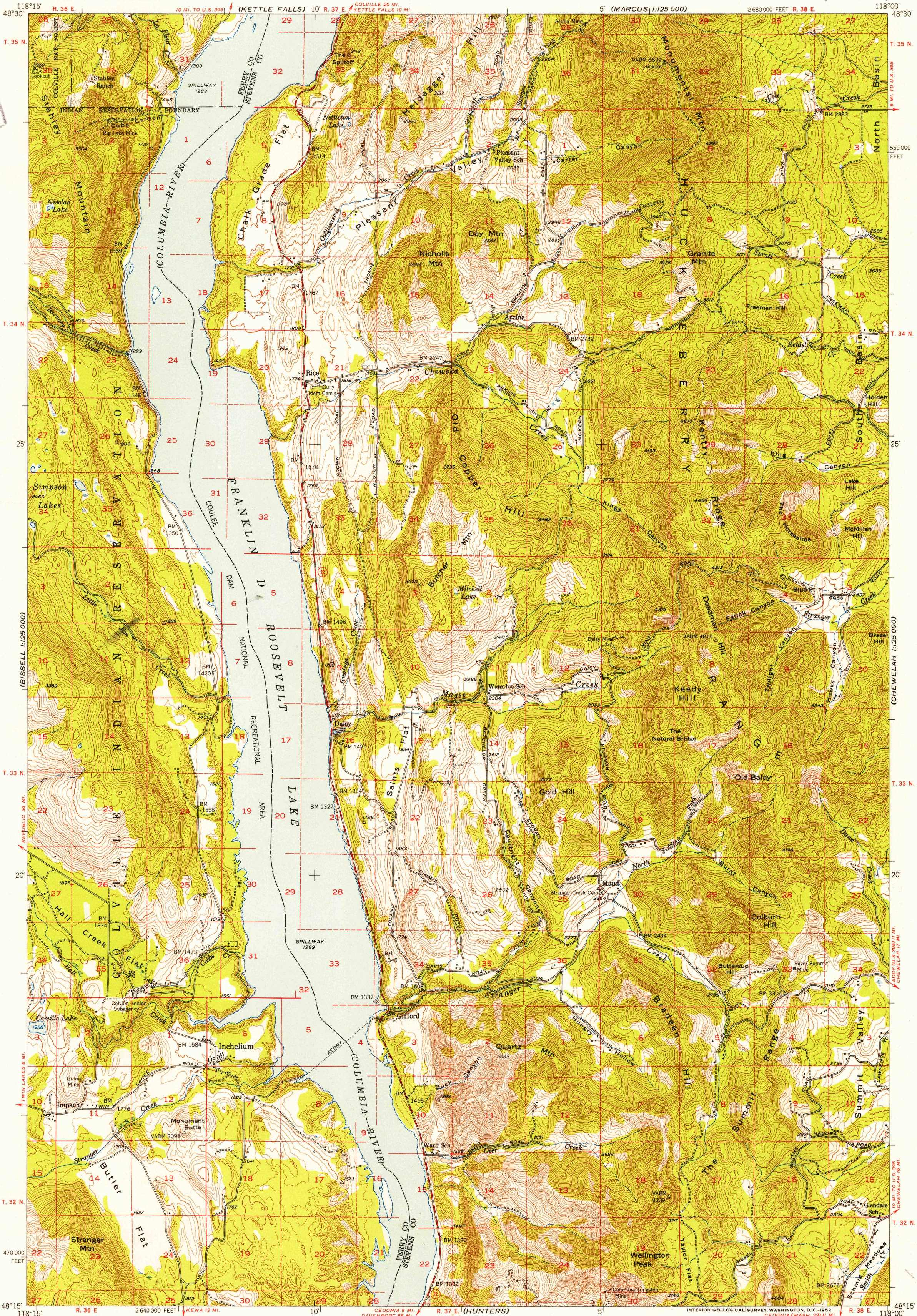


UNITED STATES  
DEPARTMENT OF THE INTERIOR  
GEOLOGICAL SURVEY

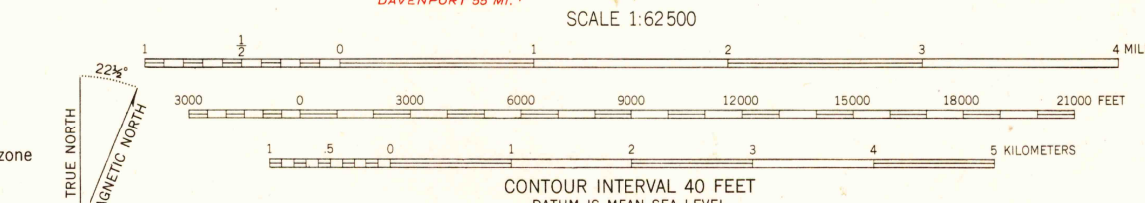
INCHELIUM QUADRANGLE  
WASHINGTON  
15 MINUTE SERIES (TOPOGRAPHIC)



U.S.G.S.  
FILE COPY  
Impressions and Killings.

U.S.G.S.  
FILE COPY  
Impressions and Killings.

Mapped, edited, and published by the Geological Survey  
Control by USGS, USC&GS, and USBR  
Topography from aerial photographs by multiplex methods  
Aerial photographs taken 1946. Field check 1950  
Polyconic projection. 1927 North American Datum  
10,000-foot grid based on Washington coordinate system, north zone  
Dashed land lines indicate approximate locations  
Unchecked elevations are shown in brown  
Franklin D. Roosevelt Lake comprises the Coulee Dam  
National Recreational Area



ROAD CLASSIFICATION  
Heavy-duty 4 LANE 16 LANE Light-duty  
Medium-duty 4 LANE 16 LANE Unimproved dirt  
U.S. Route State Route

INCHELIUM, WASH.  
N4815-W11800/15

FOR SALE BY U.S. GEOLOGICAL SURVEY, FEDERAL CENTER, DENVER, COLORADO OR WASHINGTON 25, D.C.  
A FOLDER DESCRIBING TOPOGRAPHIC MAPS AND SYMBOLS IS AVAILABLE ON REQUEST

1950

SEP 16 1952 2125