

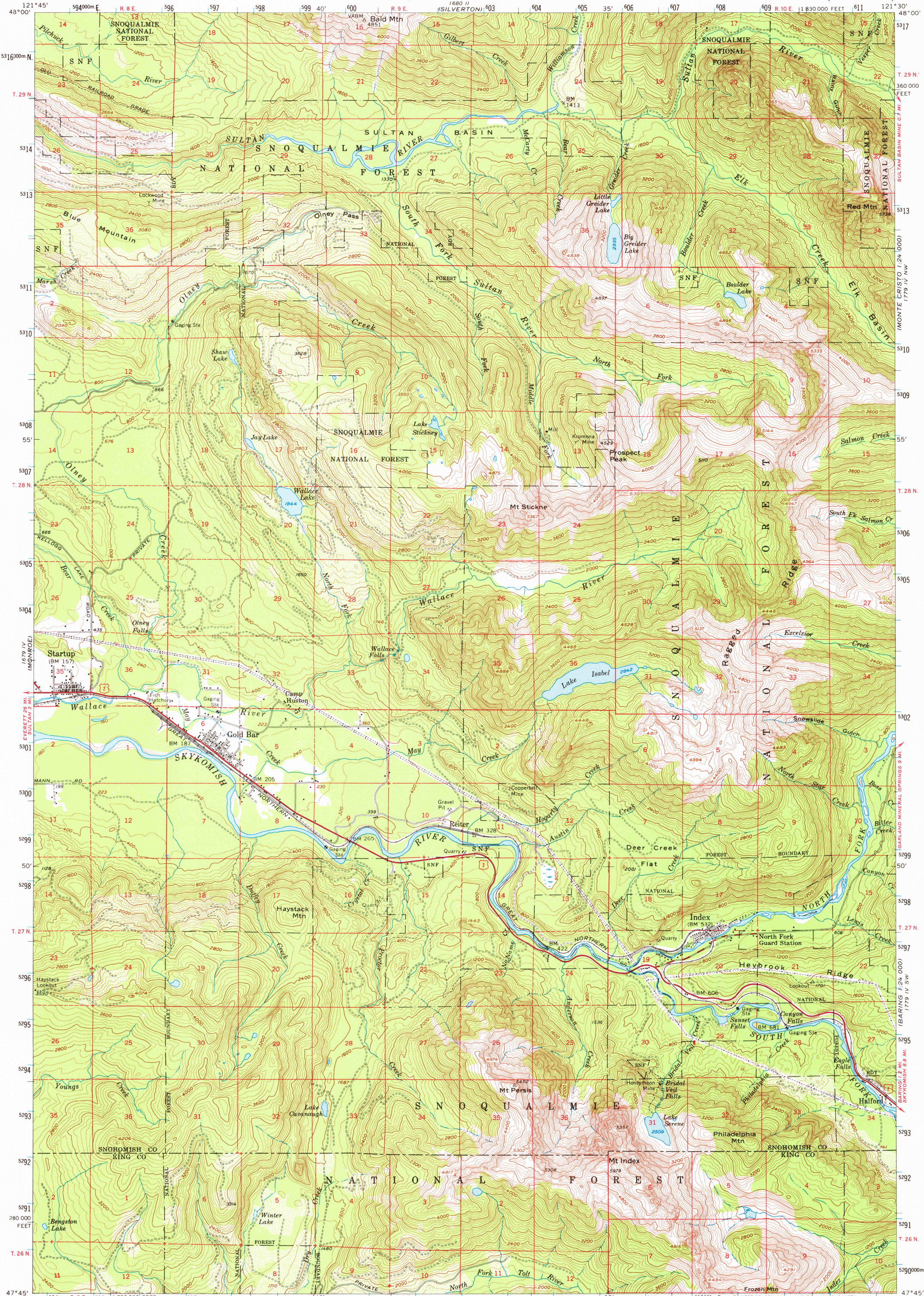
GRANITE FALLS
1890 11
1679 III E

UNITED STATES
DEPARTMENT OF THE INTERIOR
GEOLOGICAL SURVEY

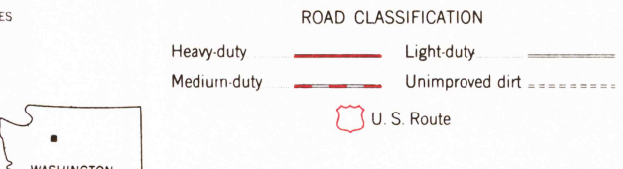
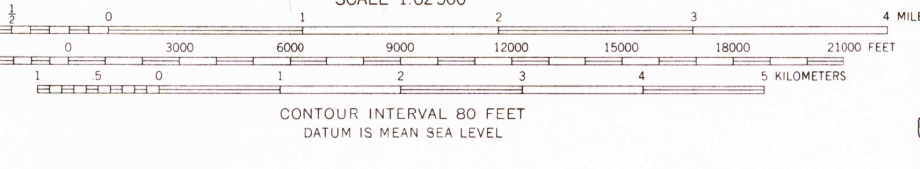
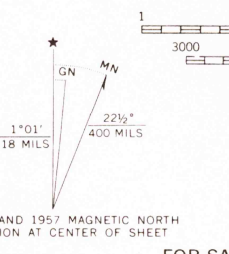
STATE OF WASHINGTON
DEPARTMENT OF CONSERVATION
EARL COE, DIRECTOR
MARSHALL T. HUNTING, SUPERVISOR, DIVISION OF MINES AND GEOLOGY
(SILVERTON) 1680 11

INDEX QUADRANGLE
WASHINGTON
15 MINUTE SERIES (TOPOGRAPHIC)

1890 11
1679 III E



Mapped, edited, and published by the Geological Survey
Control by USGS and USC&GS
Topography from aerial photographs by multiplex methods
Aerial photographs taken 1954. Advance field check 1957
Polyconic projection. 1927 North American datum
10,000-foot grid based on Washington coordinate system,
north zone
1000-meter Universal Transverse Mercator grid ticks,
zone 10, shown in blue
Dashed land lines indicate approximate locations
Unchecked elevations are shown in brown



INDEX, WASH.
N4745-W12130/15

1957
AMS 1679 I-SERIES V791

FOR SALE BY U. S. GEOLOGICAL SURVEY, DENVER, COLORADO 80225 OR WASHINGTON, D. C. 20242
A FOLDER DESCRIBING TOPOGRAPHIC MAPS AND SYMBOLS IS AVAILABLE ON REQUEST

LAKE JOY 1,240,000
1679 III E

1890 11
1679 III E