

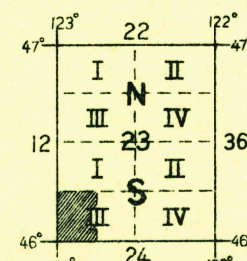
Compiled under the direction of  
Col. Chas. L. Potter, Corps of Engineers, U.S.A.,  
Department Engineer, Western Department.  
1919  
From U.S. Coast & Geodetic Survey Charts.  
Military Surveys, 1909.  
General Land Office Maps.  
S. P. & S. R. R. and N. P. R. R. alignments.



Contour Interval 20 feet  
Datum is mean sea level

NOTE: OFFICERS USING THIS MAP WILL MARK HEREON CORRECTIONS AND ADDITIONS WHICH COME  
TO THEIR ATTENTION AND MAIL DIRECT TO "THE CHIEF OF ENGINEERS, WASHINGTON, D.C."

FIVE THOUSAND YARD GRID COMPUTED FROM "GRID SYSTEM FOR PROGRESSIVE MAPS  
IN THE U. S." ZONE G. U. S. C. & G. S. SPECIAL PUBLICATION NO. 59.  
(THE LAST THREE DIGITS OF THE GRID NUMBERS ARE OMITTED.)



TRUE NORTH  
MAGNETIC NORTH  
APPROXIMATE MEAN  
DECLINATION 1921

KALAMA

Engineer Reproduction Plant, U. S. Army, Washington Barracks, D. C.  
1921