

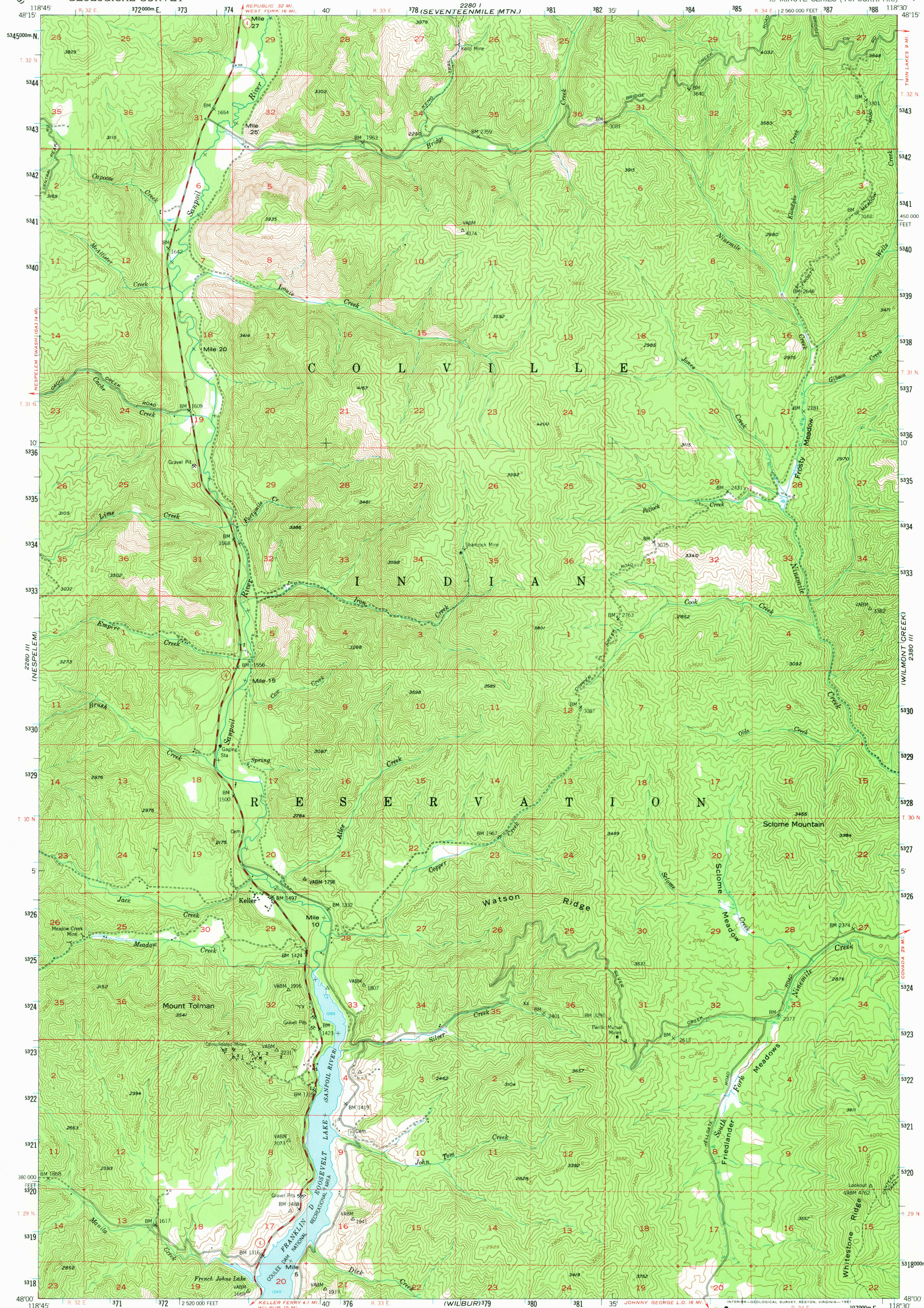
2280 IV
(BALD KNOB)

UNITED STATES
DEPARTMENT OF THE INTERIOR
GEOLOGICAL SURVEY

STATE OF WASHINGTON
DEPARTMENT OF NATURAL RESOURCES

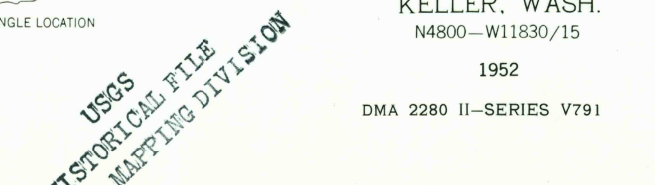
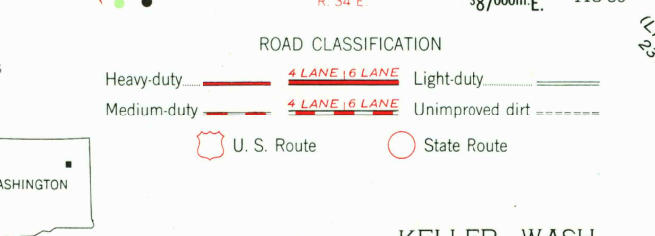
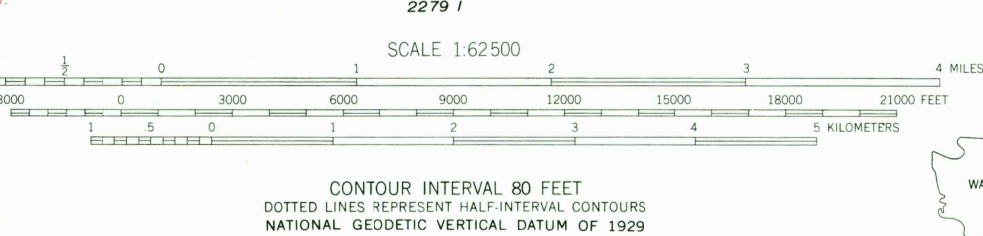
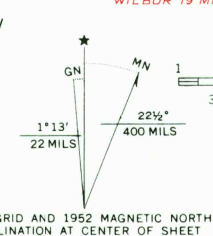
KELLER QUADRANGLE
WASHINGTON-FERRY CO.
15 MINUTE SERIES (TOPOGRAPHIC)

2280 IV
(TWIN LAKES)



GRAND COULEE DAM
2279 IV

Mapped, edited, and published by the Geological Survey
Control by USGS, USC&GS, and USBR
Topography from aerial photographs by multiplex methods
Aerial photographs taken 1946. Field check 1952
Polyconic projection. 1927 North American datum
10,000-foot grid based on Washington coordinate system,
north zone
1000-meter Universal Transverse Mercator grid ticks,
zone 11, shown in blue
To place on the predicted North American Datum 1983
move the projection lines 17 meters north and
83 meters east
Dashed land lines indicate approximate location
Franklin D. Roosevelt Lake comprises the Coulee Dam
National Recreation Area
There may be private inholdings within the boundaries of
the National or State reservations shown on this map



2280 IV
(LINCOLN)

USGS
HISTORICAL FILE
NATIONAL MAPING DIVISION

KELLER, WASH.
N4800-W1830/15
1952
DMA 2280 II-SERIES V791

AUG 13 1980
1200