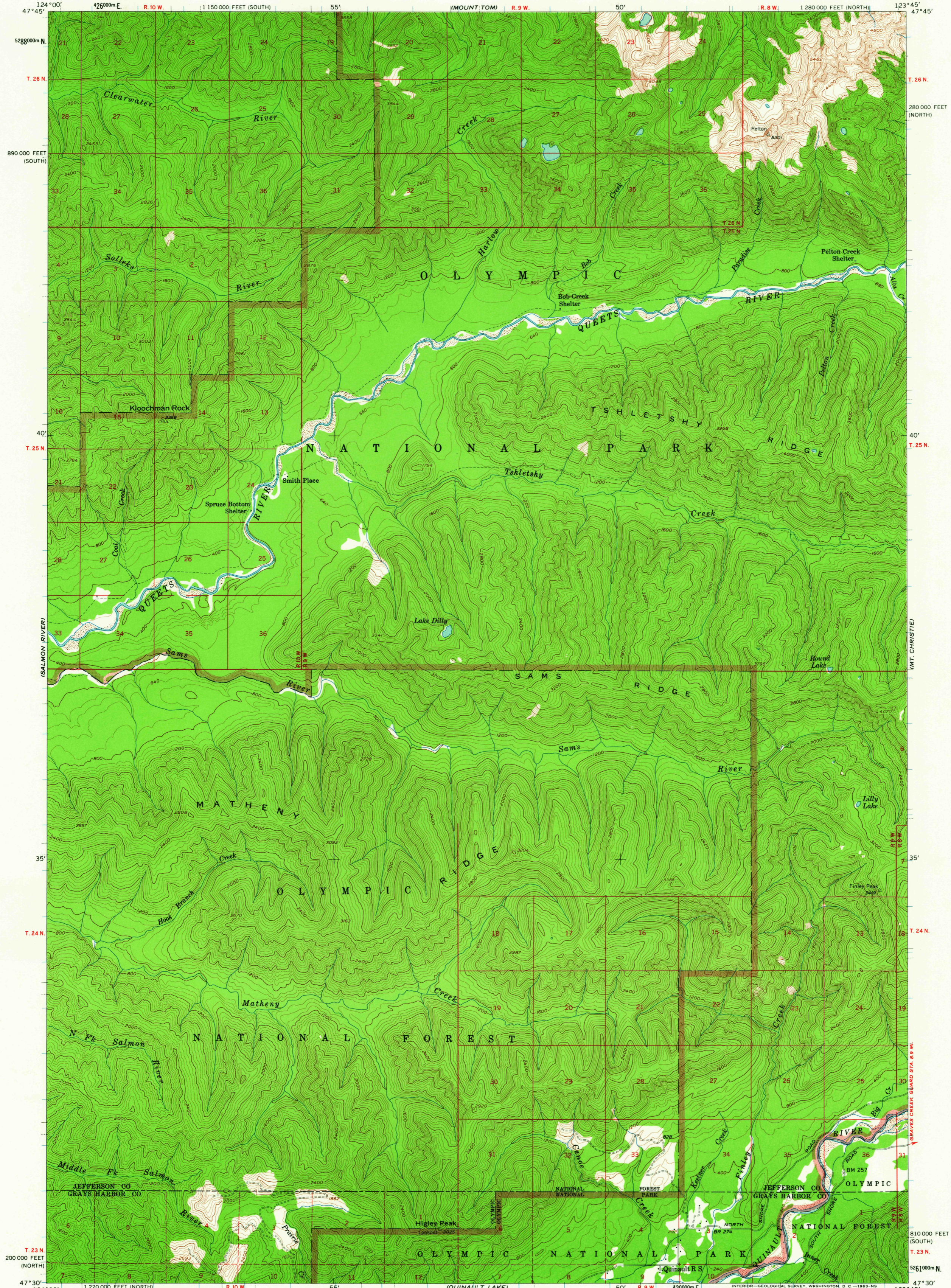
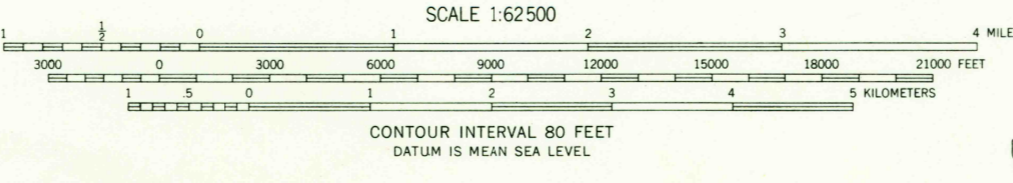


UNITED STATES
DEPARTMENT OF THE INTERIOR
GEOLOGICAL SURVEY

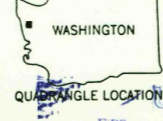
KLOOCHMAN ROCK QUADRANGLE
WASHINGTON
15 MINUTE SERIES (TOPOGRAPHIC)



Mapped, edited, and published by the Geological Survey
Control by USGS and USC&GS
Topography from aerial photographs by photogrammetric methods
Aerial photographs taken 1954. Advance field check 1956
Polyconic projection. 1927 North American datum
10,000-foot grids based on Washington coordinate system,
north and south zones
1000-meter Universal Transverse Mercator grid ticks,
zone 10, shown in blue
Dashed land lines indicate approximate locations
Land lines unsurveyed in T. 23 N.-R. 8 W., T. 24 N.-
R. 10 W., T. 25 N.-Rs. 8 and 9W., T. 26 N.-R. 8 W.,
and parts of T. 23 N.-R. 9 W., and T. 24 N.-Rs. 8 and 9W.
Unchecked elevations are shown in brown



ROAD CLASSIFICATION
Light-duty ————— Unimproved dirt - - - - -



U.S.G.S. KLOOCHMAN ROCK, WASH.
N4730-W12345/15

FOR SALE BY U. S. GEOLOGICAL SURVEY, DENVER 25, COLORADO OR WASHINGTON 25, D. C.
A FOLDER DESCRIBING TOPOGRAPHIC MAPS AND SYMBOLS IS AVAILABLE ON REQUEST

1956

U.S.S. FILE COPY 578 50
TOPOGRAPHIC DIVISION

MAY 24 1963