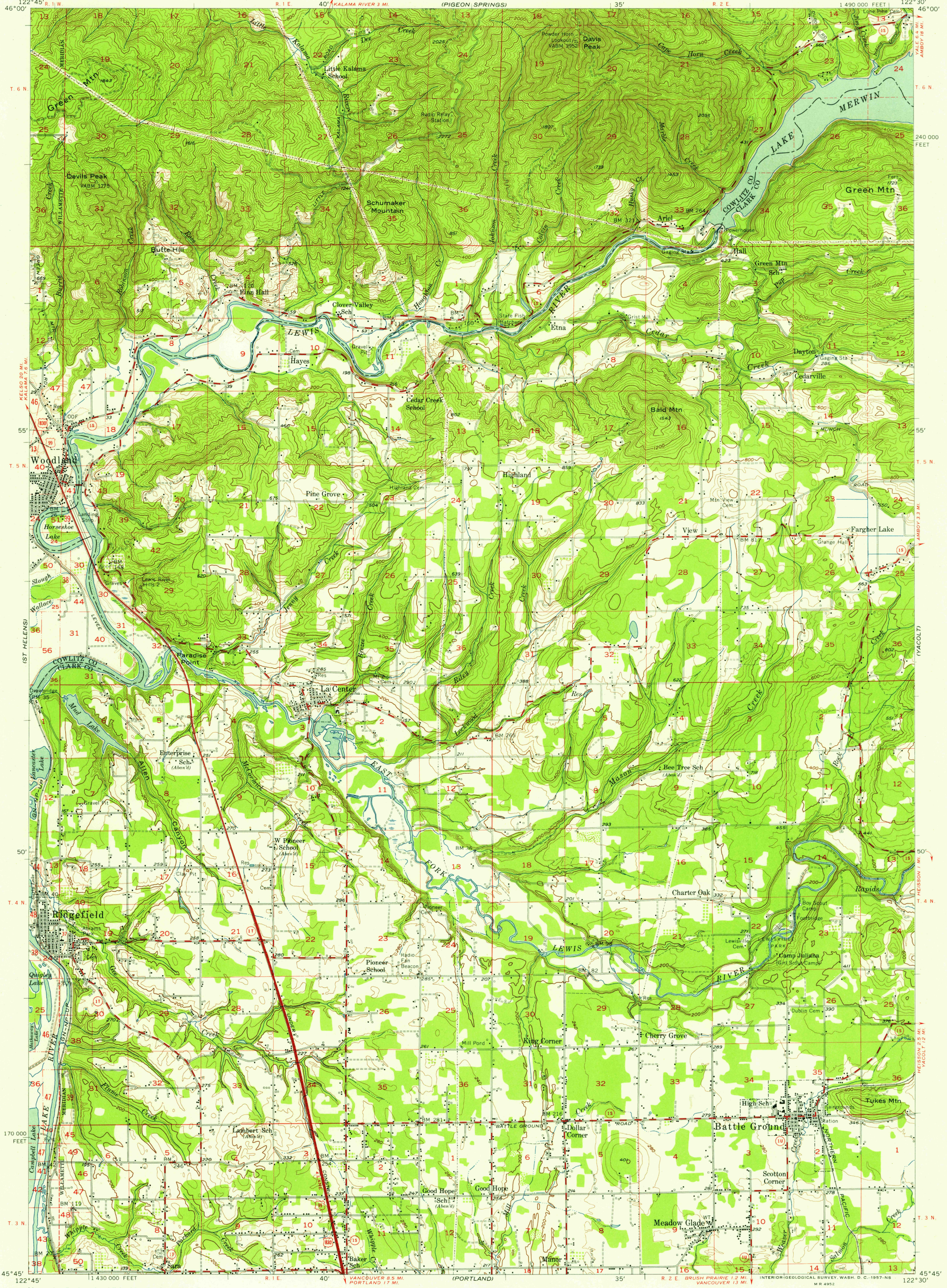


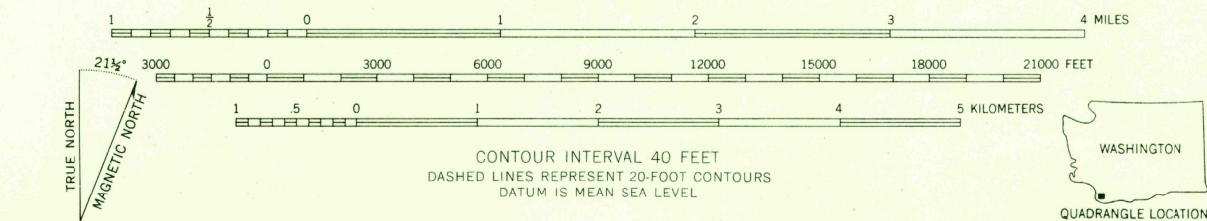
(MT ST. HELENS)
1:25,000



U.S.G.S.
FILE COPY
TOPOGRAPHIC DIVISION

U.S.G.S.
FILE COPY
TOPOGRAPHIC DIVISION

Maped, edited, and published by the Geological Survey
Control by USGS, USC&GS, USCE, and Pacific Power & Light Co.
Topography from aerial photographs by photogrammetric methods
Aerial photographs taken 1951. Field check 1954
Hydrography compiled from USC&GS chart 6153 (1952)
Polyconic projection. 1927 North American datum
10,000-foot grid based on Washington coordinate system, south zone
Dashed land lines indicate approximate locations



ROAD CLASSIFICATION
Heavy-duty ——— Light-duty ———
Medium-duty ——— Unimproved dirt ———
U. S. Route State Route

The south half of this area is also covered by
1:24 000 scale maps of Ridgefield and Battle Ground
7.5 minute quadrangles, surveyed 1954.

LA CENTER, WASH.
N4545-W12230/15

1954

THIS MAP COMPLIES WITH NATIONAL MAP ACCURACY STANDARDS
FOR SALE BY U. S. GEOLOGICAL SURVEY, DENVER 2, COLORADO OR WASHINGTON 25, D. C.
A FOLDER DESCRIBING TOPOGRAPHIC MAPS AND SYMBOLS IS AVAILABLE ON REQUEST

2595