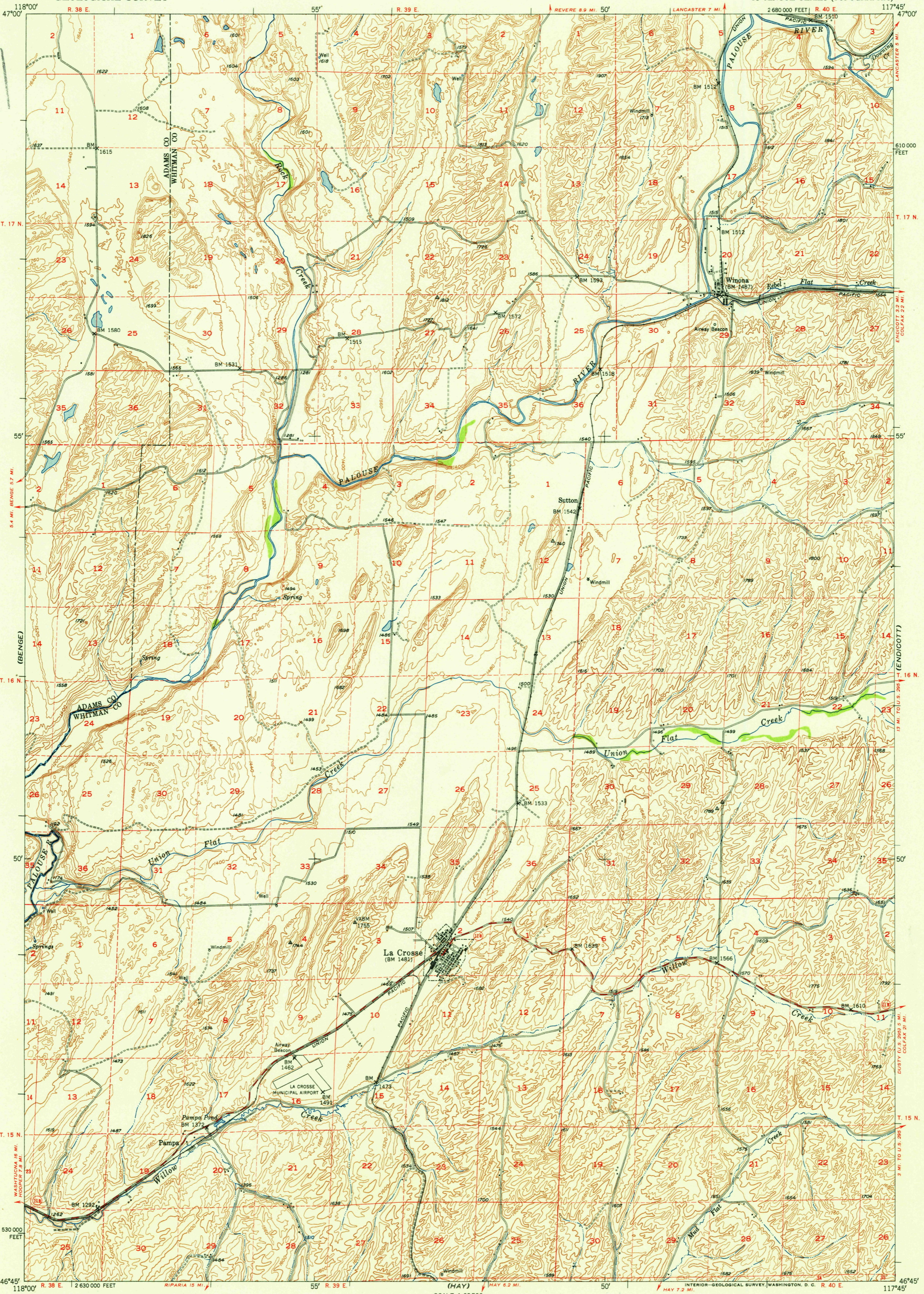
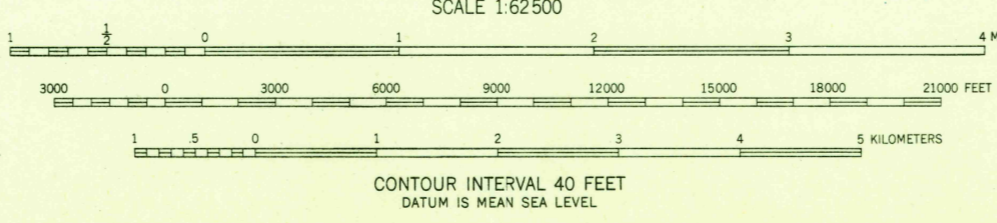


U.S.G.S.
FILE COPY
Inspection and Editing.



Maped, edited, and published by the Geological Survey
Control by USGS and USC&GS
Topography from aerial photographs by multiplex methods
Aerial photographs taken 1946. Field check 1950
Polyconic projection. 1927 North American datum
10,000-foot grid based on Washington coordinate system,
south zone
Dashed land lines indicate approximate location



ROAD CLASSIFICATION

Heavy-duty	4 LANE 16 LANE	Light-duty
Medium-duty	4 LANE 6 LANE	Unimproved dirt

U.S. Route (square symbol)
State Route (circle symbol)

U.S.G.S.
FILE COPY
Inspection and Editing.

LA CROSSE, WASH.
N4645-W11745/15
EDITION OF 1952