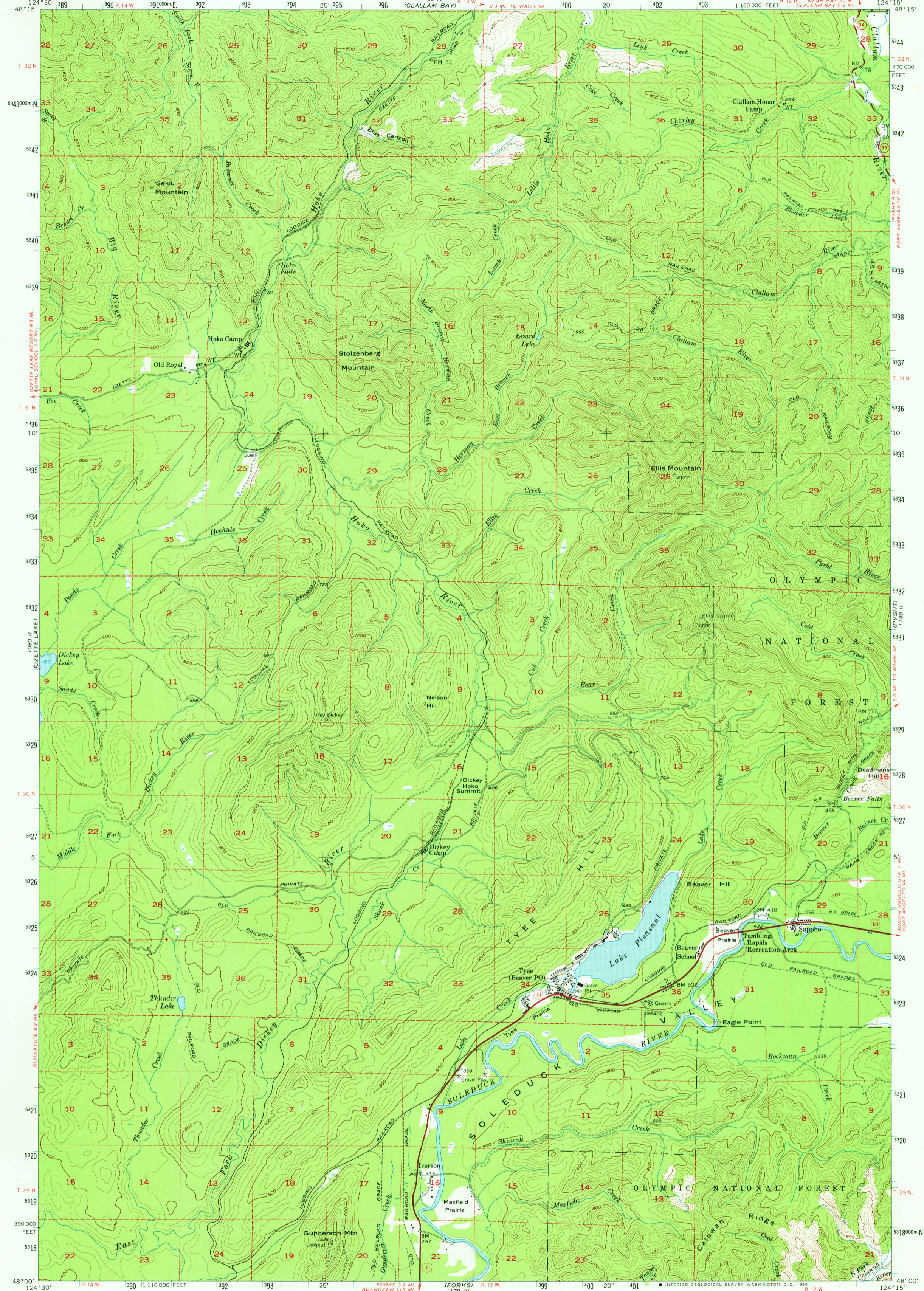


CAPE FLATTERY

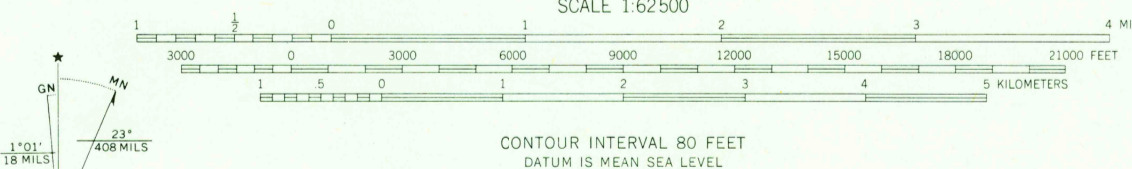
UNITED STATES
DEPARTMENT OF THE INTERIOR
GEOLOGICAL SURVEY



LAKE PLEASANT QUADRANGLE
WASHINGTON-CLALLAM CO.
15 MINUTE SERIES (TOPOGRAPHIC)

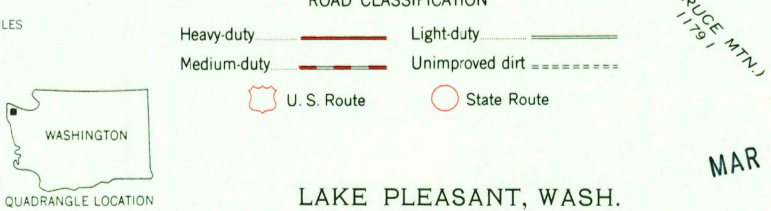


Maped, edited, and published by the Geological Survey
Control by USGS, US&GS, and USCE
Topography from aerial photographs by ER-55 plotter
Aerial photographs taken 1955. Field check 1957
Polyconic projection. 1927 North American datum
10,000-foot grid based on Washington coordinate system,
north zone
1000-meter Universal Transverse Mercator grid ticks,
zone 10, shown in blue
Dashed land lines indicate approximate locations
Unchecked elevations are shown in brown



CONTOUR INTERVAL 80 FEET
DATUM IS MEAN SEA LEVEL

UTM GRID AND 1957 MAGNETIC NORTH
DECLINATION AT CENTER OF SHEET



WASHINGTON
QUADRANGLE LOCATION

LAKE PLEASANT, WASH.
N4800-W12415/15

1957
AMS 1180 III-SERIES V791

FOR SALE BY U. S. GEOLOGICAL SURVEY, DENVER, COLORADO 80225 OR WASHINGTON, D. C. 20242
A FOLDER DESCRIBING TOPOGRAPHIC MAPS AND SYMBOLS IS AVAILABLE ON REQUEST

USGS
Historical File
Topographic Division

MAR 24 1979

1,200