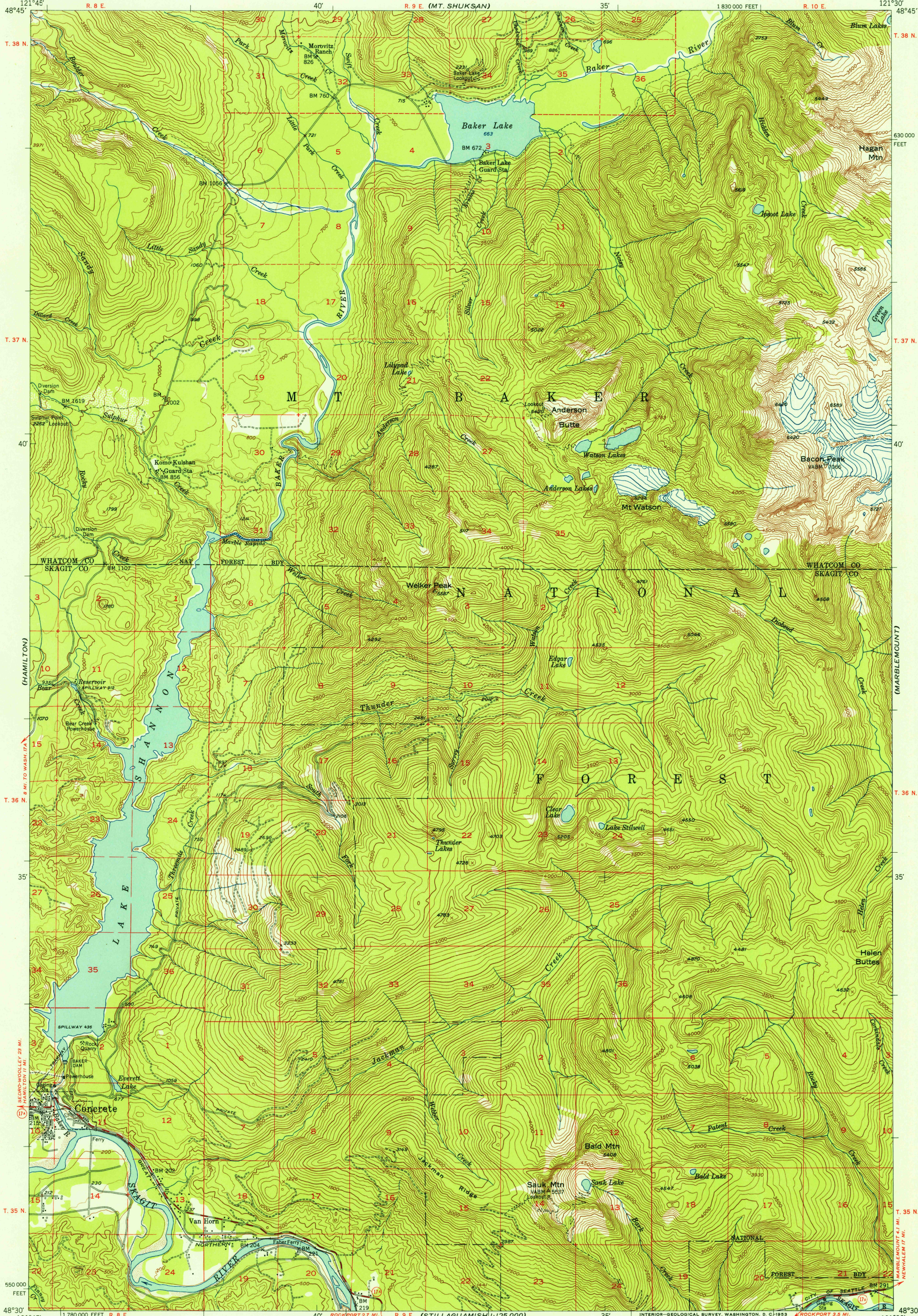


(MT. BAKER)

UNITED STATES
DEPARTMENT OF THE INTERIOR
GEOLOGICAL SURVEY

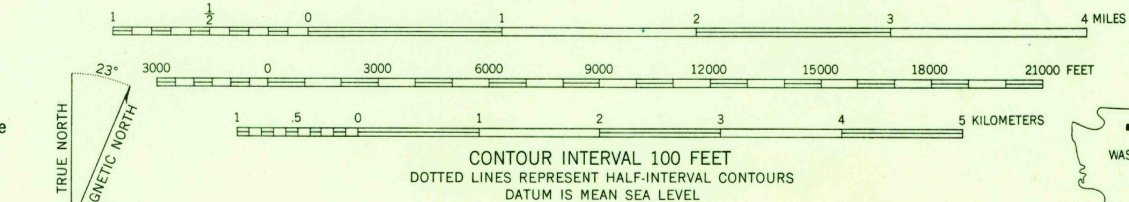
LAKE SHANNON QUADRANGLE
WASHINGTON
15 MINUTE SERIES (TOPOGRAPHIC)

(MT. CHALLENGER)



U.S.G.S.
FILE COPY
Inspection and Editing

Maped, edited, and published by the Geological Survey
Control by USGS, USC&GS, and USCE
Topography from aerial photographs by multiplex methods
Aerial photographs taken 1947. Field check 1952
Polyconic projection. 1927 North American datum
10,000-foot grid based on Washington coordinate system, north zone
Dashed land lines indicate approximate locations
Unchecked elevations are shown in brown



ROAD CLASSIFICATION
Heavy-duty 4 LANE 6 LANE Light-duty
Medium-duty 4 LANE 6 LANE Unimproved dirt
U. S. Route State Route



LAKE SHANNON, WASH.
N4830-W12130/15

1952

FOR SALE BY U. S. GEOLOGICAL SURVEY, FEDERAL CENTER, DENVER, COLORADO OR WASHINGTON 25, D. C.
A FOLDER DESCRIBING TOPOGRAPHIC MAPS AND SYMBOLS IS AVAILABLE ON REQUEST

DEC 28 1953

2715

U.S.G.S.
FILE COPY
Inspection and Editing

(GLACIER PEAK)

(STILLAGUAMISH 1:125 000)