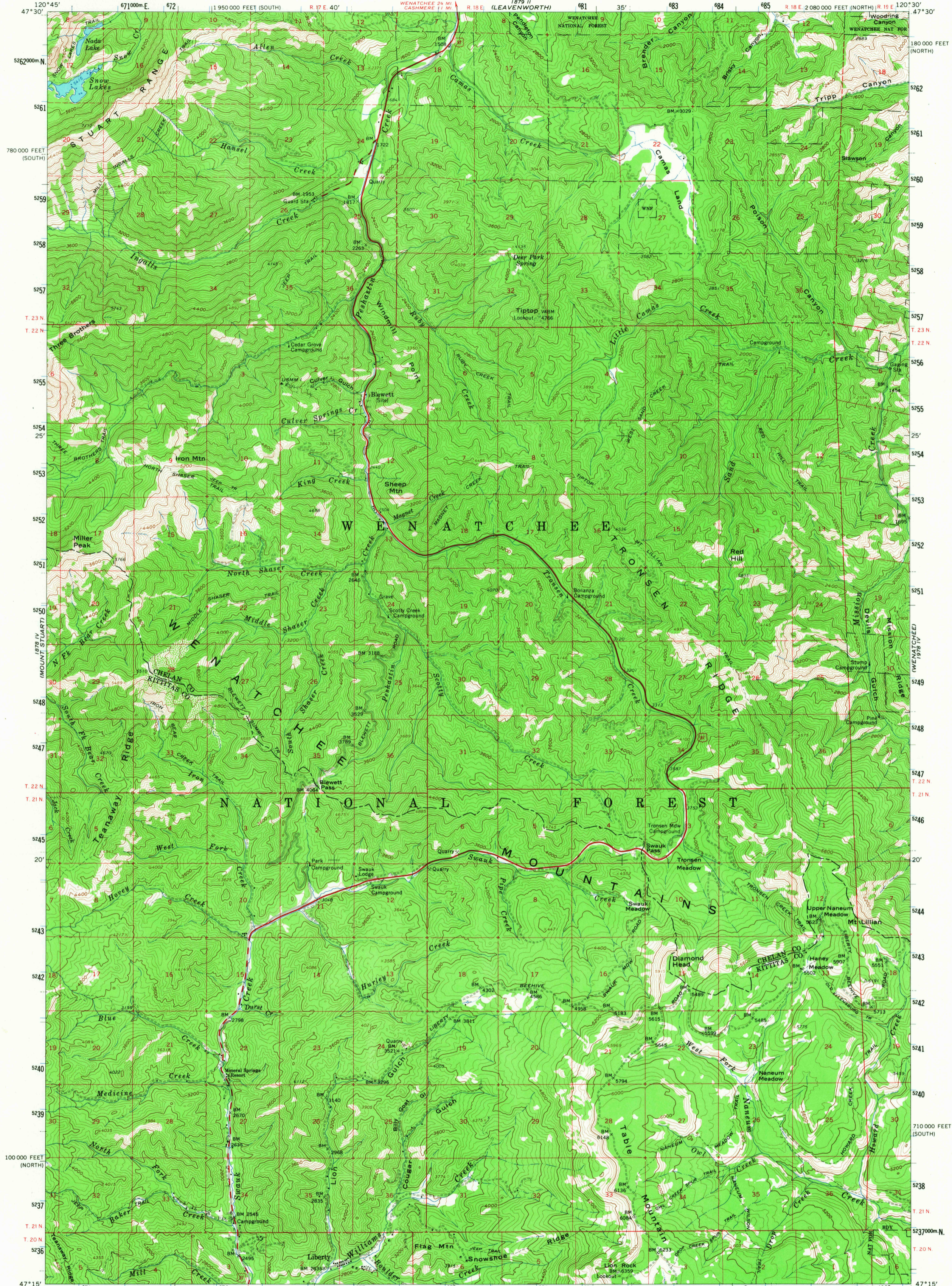


1878 III
CHINAIKUM

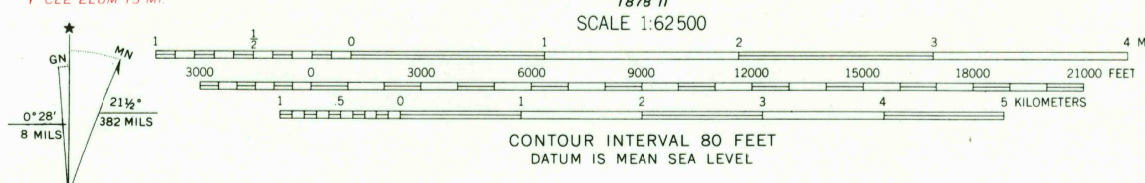
UNITED STATES
DEPARTMENT OF THE INTERIOR
GEOLOGICAL SURVEY

LIBERTY QUADRANGLE
WASHINGTON
15 MINUTE SERIES (TOPOGRAPHIC)



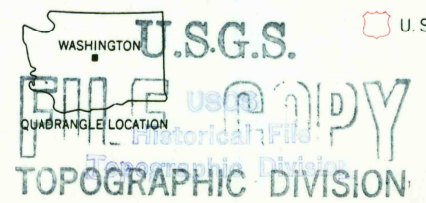
GLE ELUM
1878 III

Mapped, edited, and published by the Geological Survey
Control by USGS and USC&GS
Topography by photogrammetric methods from aerial
photographs taken 1957. Field checked 1961
Polyconic projection. 1927 North American datum
10,000-foot grids based on Washington coordinate system,
north and south zones
1000-meter Universal Transverse Mercator grid ticks,
zone 10, shown in blue



FOR SALE BY U. S. GEOLOGICAL SURVEY, DENVER, COLORADO 80225 OR WASHINGTON, D. C. 20242
A FOLDER DESCRIBING TOPOGRAPHIC MAPS AND SYMBOLS IS AVAILABLE ON REQUEST

ROAD CLASSIFICATION
Heavy-duty ——— Light-duty ———
Medium-duty ——— Unimproved dirt - - - - -
U. S. Route



LIBERTY, WASH.
N4715—W12030/15
1961
AMS 1878 I—SERIES V791

8065
SEP 12 1967