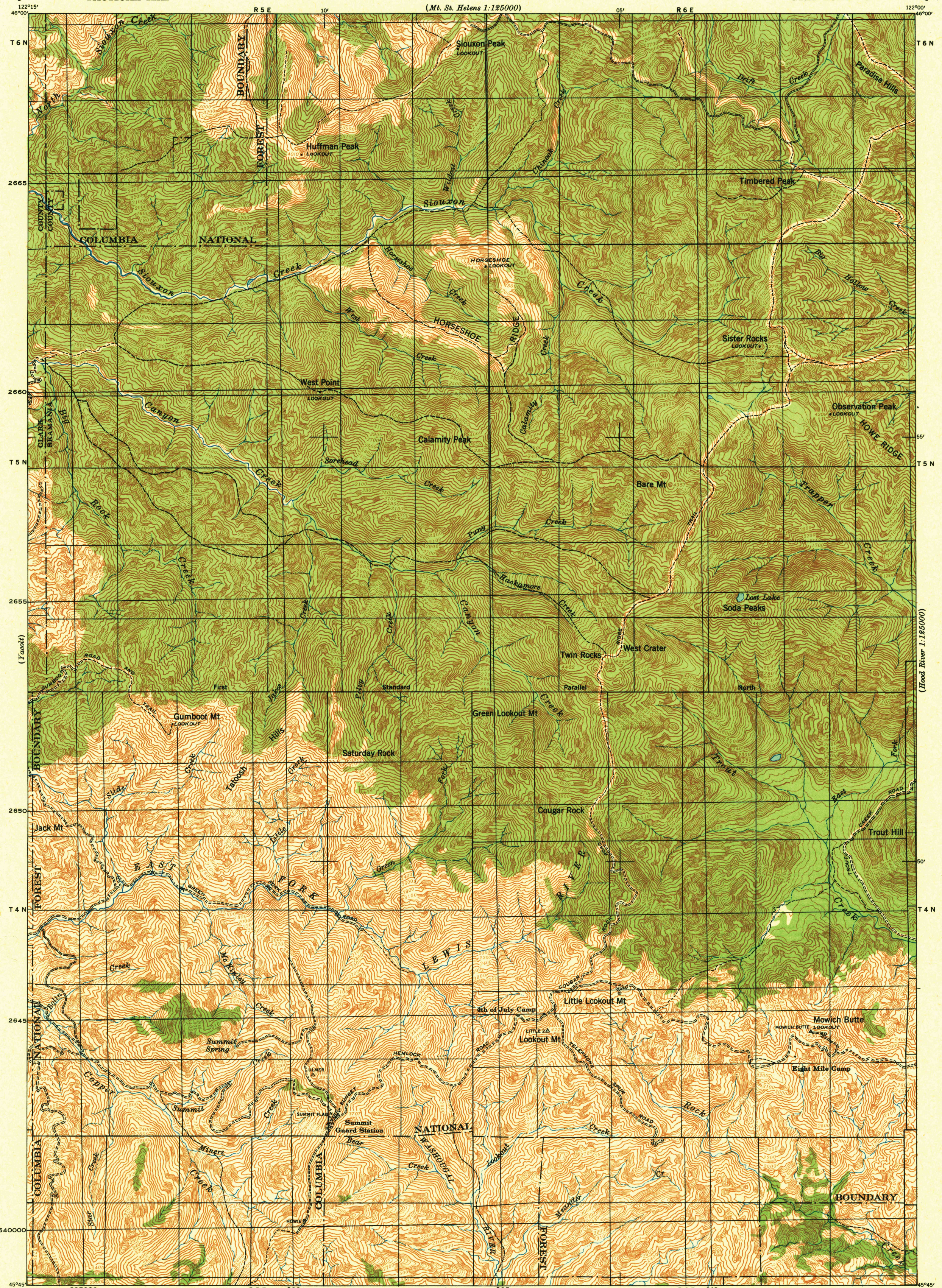


(Mt. St. Helens)
1:125000

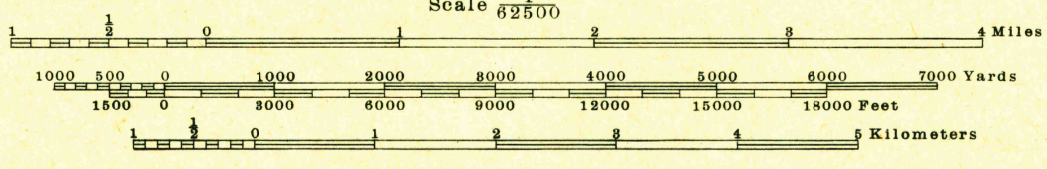
CORPS OF ENGINEERS, U. S. ARMY
TACTICAL MAP

WASHINGTON
LOOKOUT MT. QUADRANGLE
GRID ZONE "G"

(Steamboat Mt.)
1:125000



Prepared under the direction of the Chief of Engineers,
U. S. Army, 1939.
Horizontal control by 29th Engineers, U. S. Army, 1937-38.
Vertical control by 29th Engineers, U. S. Army, 1937-38.
Topography (West and South part) by 29th Engineers,
U. S. Army, 1939; using the stereo-comparagraph (intermediate
elevations by multiplex aero projectors) T-3 A (five-lens)
aerial photography by 91st Observation Squadron, Air Corps,
U. S. Army, 1937.
North-East portion by U. S. Forest Service, using terrestrial
photographs taken 1919.
Polyconic Projection, North American 1927 Datum.

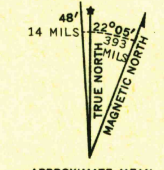


Contour interval 20 feet

Datum is mean sea level (1929 Adj.)

FIVE THOUSAND YARD GRID COMPUTED FROM "GRID SYSTEM FOR PROGRESSIVE MAPS
IN THE U. S." ZONE G, U. S. C. & G. S. SPECIAL PUBLICATION NO. 59
(THE LAST THREE DIGITS OF THE GRID NUMBERS ARE OMITTED)

NOTE: OFFICERS USING THIS MAP WILL MARK HEREON CORRECTIONS AND ADDITIONS WHICH COME
TO THEIR ATTENTION AND MAIL DIRECT TO "THE CHIEF OF ENGINEERS, WASHINGTON, D. C."



APPROXIMATE MEAN
DECLINATION 1938
ANNUAL MAGNETIC CHANGE 1.8'
DECREASE

USGS
Historical File
Topographic Division

LOOKOUT MT., WASH.
N4545-W12200/15

U. S. G. S.
FILE COPY
Inspection and Editing

(Columbia)

(Hood River 1:125000)

(Columbia)

(Hood River 1:125000)