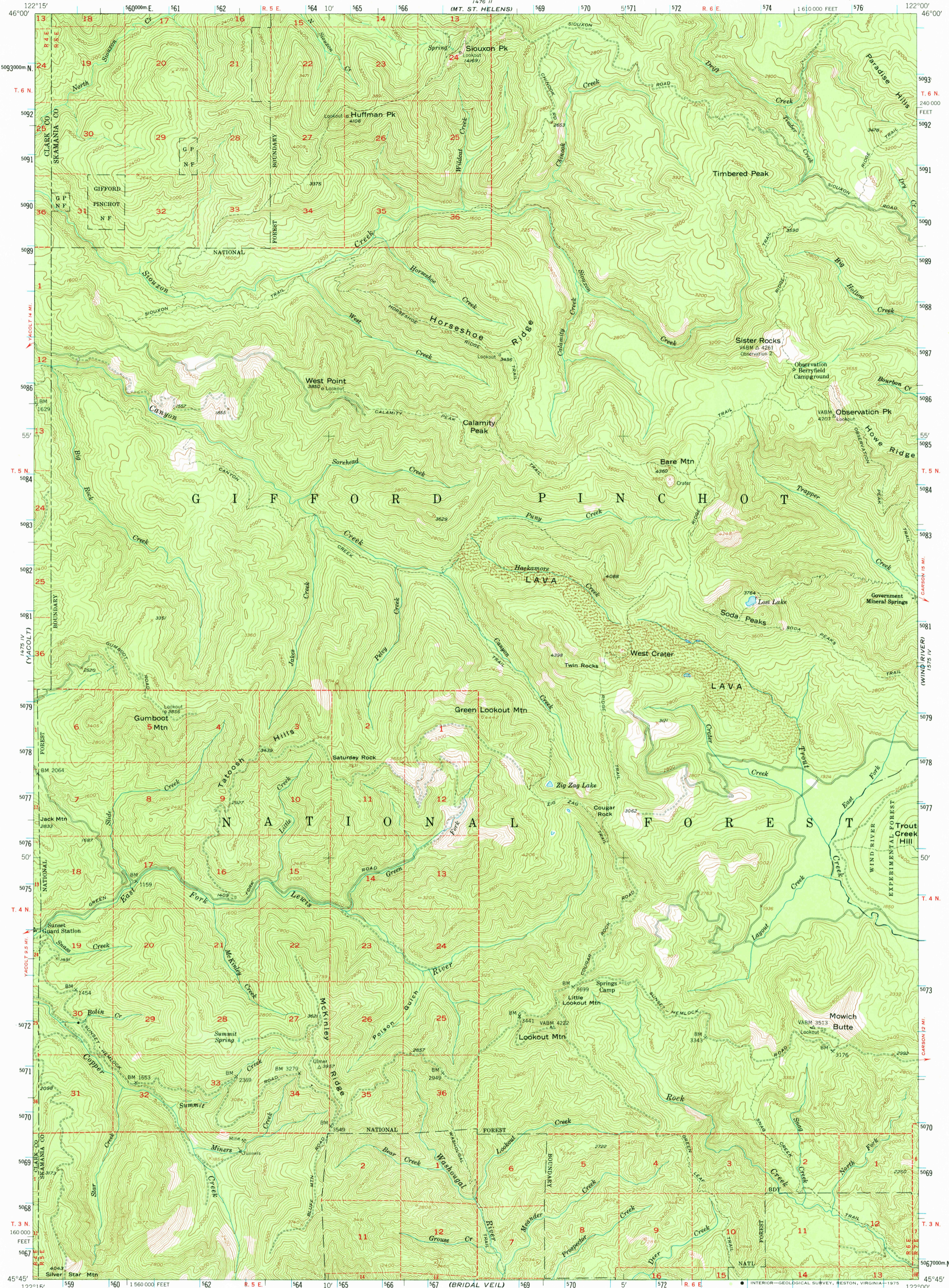


1475 IV
(COLE AR)

UNITED STATES
DEPARTMENT OF THE INTERIOR
GEOLOGICAL SURVEY

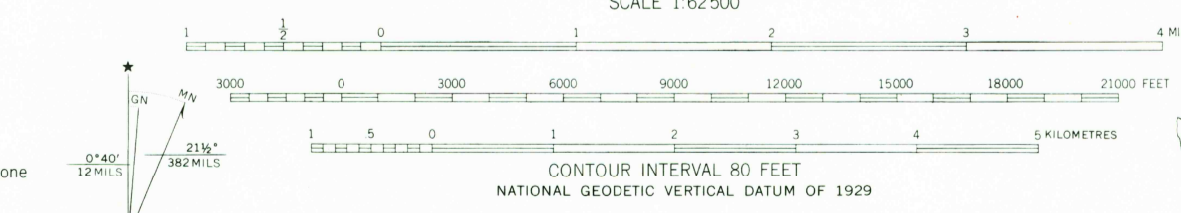
LOOKOUT MTN. QUADRANGLE
WASHINGTON
15 MINUTE SERIES (TOPOGRAPHIC)

1576 III SW
(BURNETT PEAK 24 000)



(CAM 5)
1475 III

Mapped, edited, and published by the Geological Survey
Control by USGS, USC&GS, and USCE
Mapped 1939, remapped 1953
Topography from aerial photographs by multiplex methods
Aerial photographs taken 1952 Advance field check 1953
Polyconic projection. 1927 North American datum
10,000-foot grid based on Washington coordinate system, south zone
Dashed land lines indicate approximate locations
Unchecked elevations are shown in brown
1000-metre Universal Transverse Mercator grid ticks,
zone 10, shown in blue



ROAD CLASSIFICATION
Light-duty —————
Unimproved dirt - - - - -

LOOKOUT MTN., WASH.
N4545-W12200/15

1953
AMS 1475 I-SERIES V791

FOR SALE BY U. S. GEOLOGICAL SURVEY, DENVER, COLORADO 80225, OR RESTON, VIRGINIA 22092
A FOLDER DESCRIBING TOPOGRAPHIC MAPS AND SYMBOLS IS AVAILABLE ON REQUEST

(BONNEVILLE DAM)
1575 III