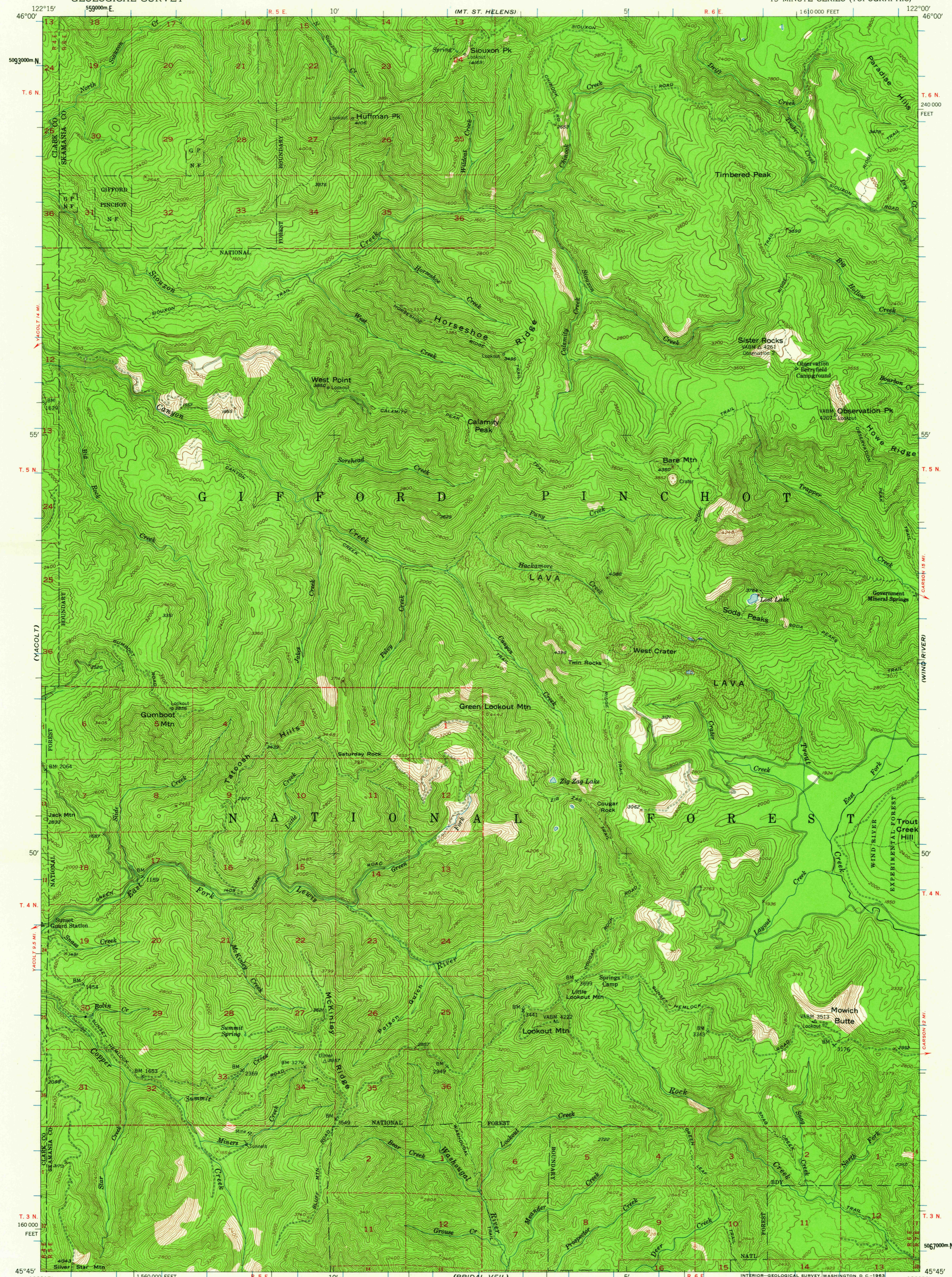


(COUGAR)

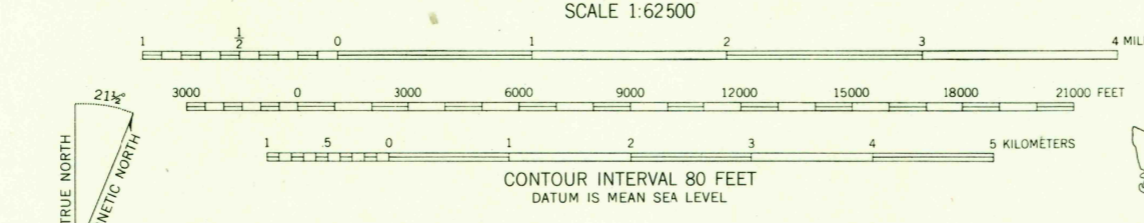
UNITED STATES  
DEPARTMENT OF THE INTERIOR  
GEOLOGICAL SURVEY

LOOKOUT MTN. QUADRANGLE  
WASHINGTON  
15 MINUTE SERIES (TOPOGRAPHIC)

(STEAMBOAT MTN)  
1:25,000



Mapped, edited, and published by the Geological Survey  
Control by USGS, USC&GS, and USCE  
Mapped 1939, remapped 1953  
Topography from aerial photographs by multiplex methods  
Aerial photographs taken 1952 Advance field check 1953  
Polyconic projection. 1927 North American datum  
10,000-foot grid based on Washington coordinate system, south zone  
Dashed land lines indicate approximate locations  
Unchecked elevations are shown in brown  
1000-meter Universal Transverse Mercator grid ticks,  
zone 10, shown in blue



ROAD CLASSIFICATION  
1953  
Light-duty ————  
Unimproved dirt - - - - -

LOOKOUT MTN., WASH.  
N4545-W12200/15

FOR SALE BY U.S. GEOLOGICAL SURVEY, DENVER 25, COLORADO OR WASHINGTON 25, D. C.  
A FOLDER DESCRIBING TOPOGRAPHIC MAPS AND SYMBOLS IS AVAILABLE ON REQUEST

1953

2561 S. 10W  
2435