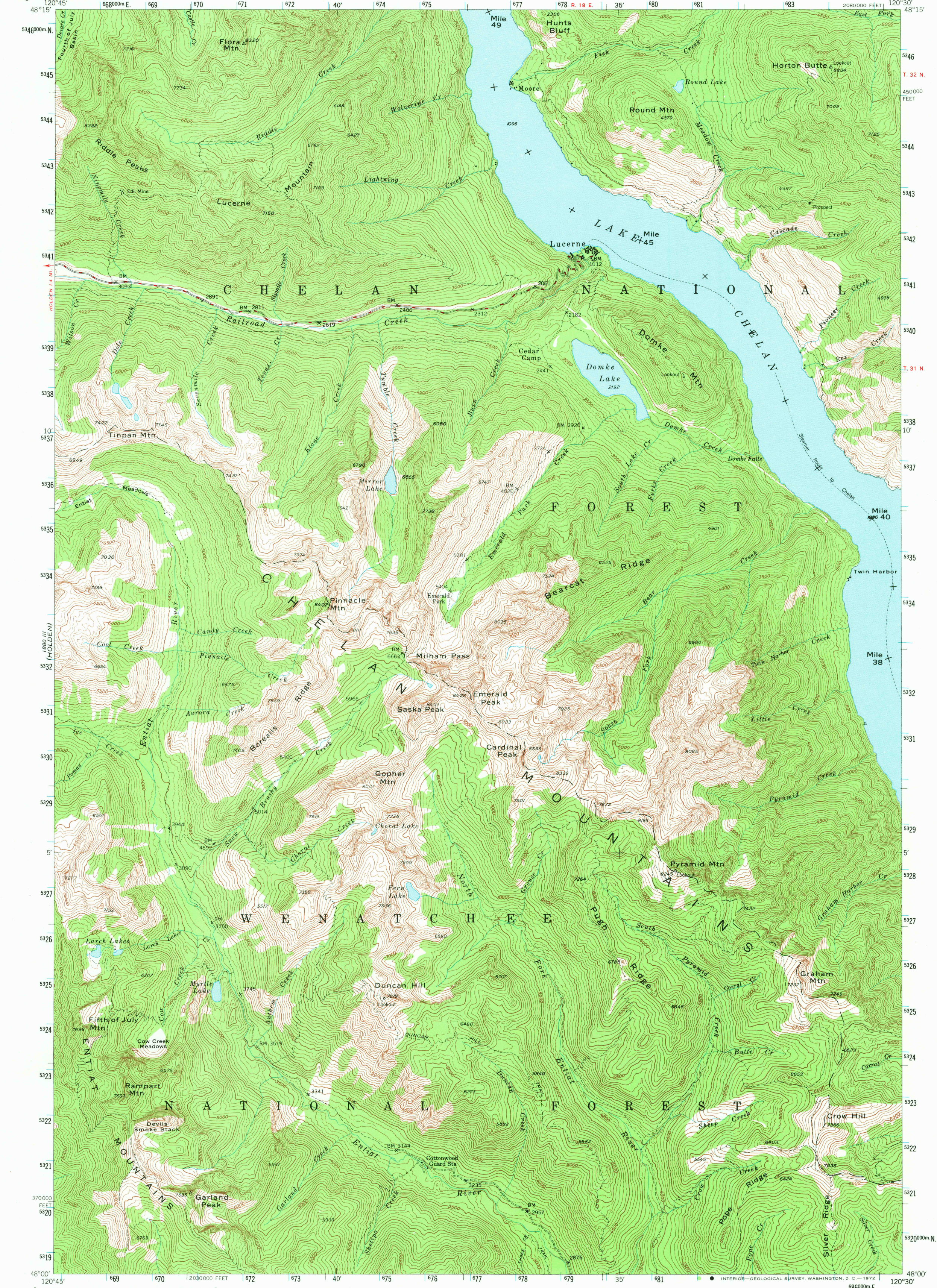


1880 IV SE  
MT. 1:24,000

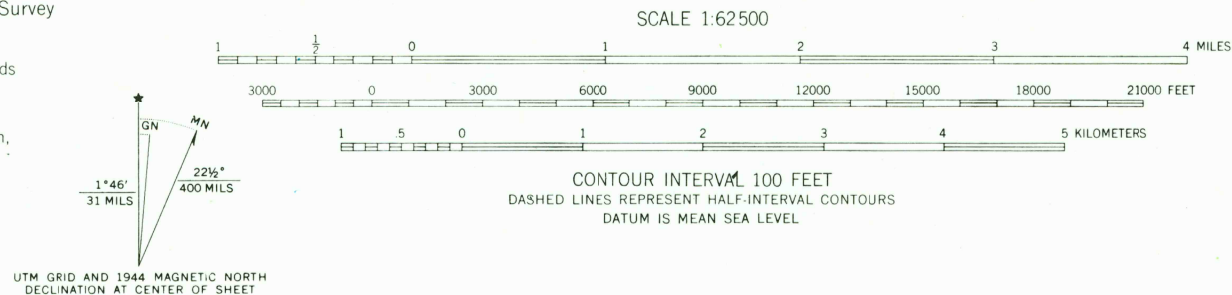
UNITED STATES  
DEPARTMENT OF THE INTERIOR  
GEOLOGICAL SURVEY

UNITED STATES  
DEPARTMENT OF THE ARMY  
CORPS OF ENGINEERS

LUCERNE QUADRANGLE  
WASHINGTON-CHELAN CO.  
15 MINUTE SERIES (TOPOGRAPHIC)



Mapped, edited, and published by the Geological Survey  
Control by USGS and USC&GS  
Topography from aerial photographs by multiplex methods  
Aerial photographs taken 1944  
Polyconic projection. 1927 North American datum  
10,000-foot grid based on Washington coordinate system,  
north zone  
Land lines are omitted because of insufficient data.  
1000-meter Universal Transverse Mercator grid ticks,  
zone 10, shown in blue



ROAD CLASSIFICATION  
HARD-SURFACE ALL WEATHER ROADS DRY WEATHER ROADS  
Heavy-duty... 2 LANE LANE Improved dirt...  
Medium-duty... 2 LANE LANE Unimproved dirt...  
Loose-surface, graded, or narrow hard-surface...  
U. S. Route State Route

LUCERNE, WASH.  
N4800-W12030/15

FOR SALE BY U. S. GEOLOGICAL SURVEY, DENVER, COLORADO 80225 OR WASHINGTON, D. C. 20242  
A FOLDER DESCRIBING TOPOGRAPHIC MAPS AND SYMBOLS IS AVAILABLE ON REQUEST

1944  
AMS 1880 II-SERIES V791