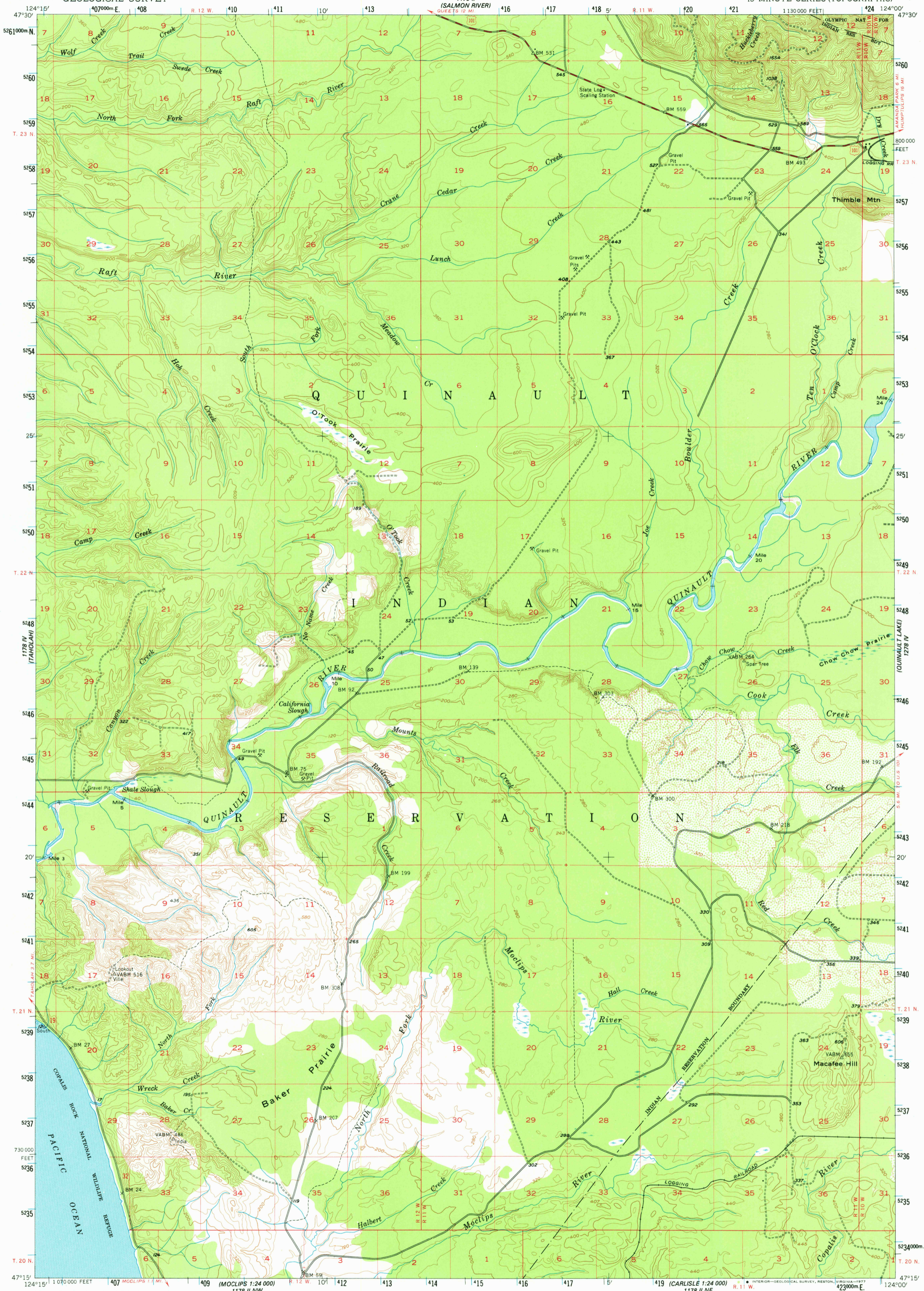


1178 III
(PSEUDO-COLOR ISLAND)

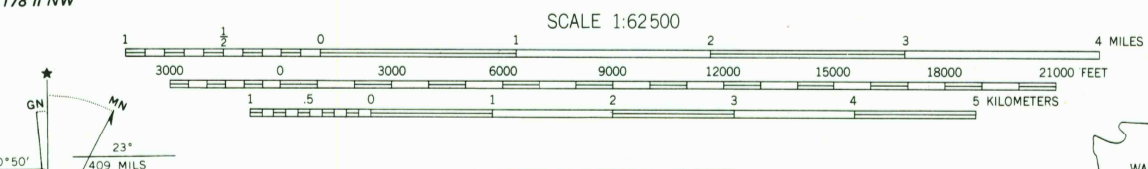
UNITED STATES
DEPARTMENT OF THE INTERIOR
GEOLOGICAL SURVEY

MACAFEE HILL QUADRANGLE
WASHINGTON—GRAYS HARBOR CO.
15 MINUTE SERIES (TOPOGRAPHIC)

1178 III
(KLOOCHMAN ROCK)



Mapped, edited, and published by the Geological Survey
Control by USGS and USC&GS
Topography from aerial photographs by multiplex methods
Aerial photographs taken 1953. Field check 1955
Polyconic projection, 1927 North American datum
10,000-foot grid based on Washington coordinate system, south zone
Unchecked elevations are shown in brown
1000-meter Universal Transverse Mercator grid ticks,
zone 10, shown in blue



CONTOUR INTERVAL 40 FEET
NATIONAL GEODETIC VERTICAL DATUM OF 1929
SHORELINE SHOWN REPRESENTS THE APPROXIMATE LINE OF MEAN HIGH WATER
THE AVERAGE RANGE OF TIDE IS APPROXIMATELY 6 FEET



ROAD CLASSIFICATION
Heavy-duty ——— Light-duty ———
Medium-duty ——— Unimproved dirt ———
U.S. Route —○— State Route —○—

MACAFEE HILL, WASH.
N 4715—W 12400/15

1955
AMS 1178 I—SERIES V791

FOR SALE BY U.S. GEOLOGICAL SURVEY, DENVER, COLORADO 80225, OR RESTON, VIRGINIA 22092
A FOLDER DESCRIBING TOPOGRAPHIC MAPS AND SYMBOLS IS AVAILABLE ON REQUEST