

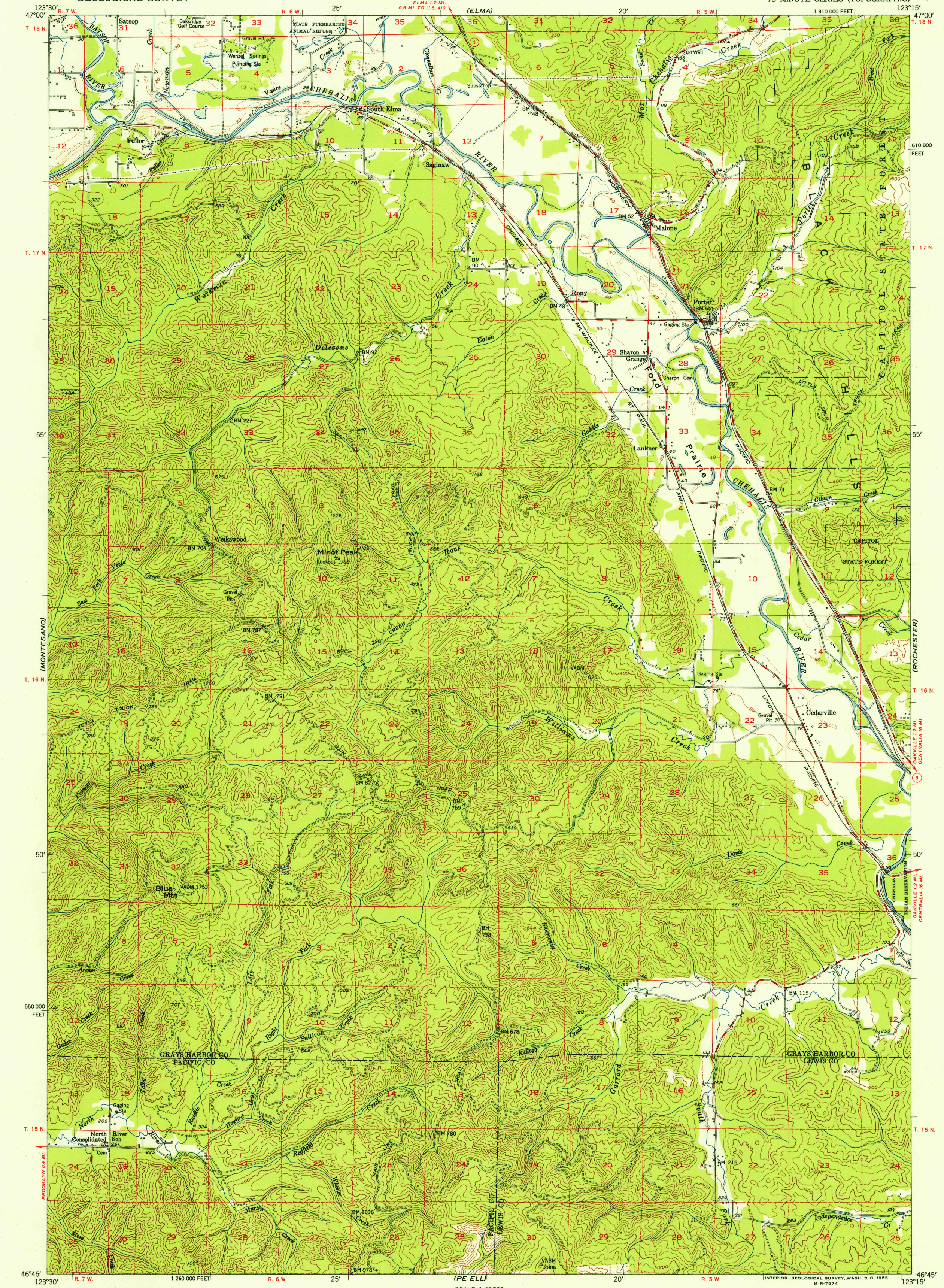
(MOBAY)

UNITED STATES
DEPARTMENT OF THE INTERIOR
GEOLOGICAL SURVEY

MALONE QUADRANGLE
WASHINGTON
15 MINUTE SERIES (TOPOGRAPHIC)

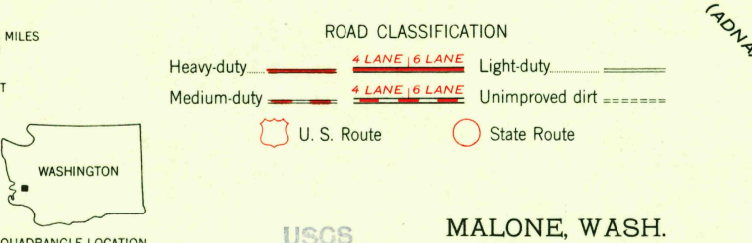
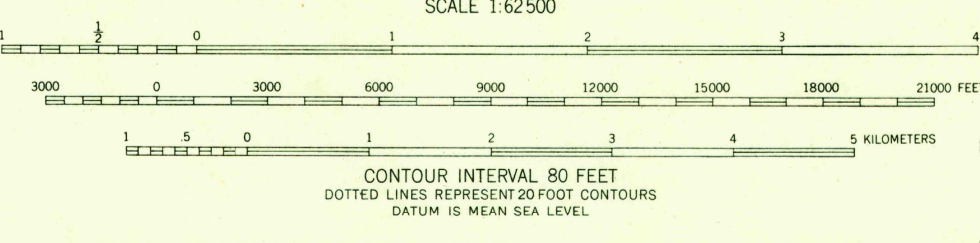
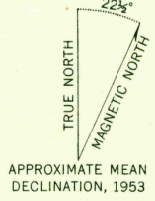
(SHELTON)

U.S.G.S.
FILE COPY
TOPOGRAPHIC DIVISION



(WILLAPA)

Maped, edited, and published by the Geological Survey
Control by USGS, USC&GS and USCE
Topography from aerial photographs by multiplex methods
and by plane-table surveys 1953. Aerial photographs taken 1951
Polyconic projection. 1927 North American datum
10,000-foot grid based on Washington coordinate system,
south zone
Dashed land lines indicate approximate locations
Unchecked elevations are shown in brown



FOR SALE BY U. S. GEOLOGICAL SURVEY, FEDERAL CENTER, DENVER, COLORADO OR WASHINGTON 25, D. C.
A FOLDER DESCRIBING TOPOGRAPHIC MAPS AND SYMBOLS IS AVAILABLE ON REQUEST

USGS
Historical File
Topographic Division
MALONE, WASH.
N4645-W12315/15
1953

U.S.G.S.
FILE COPY
TOPOGRAPHIC DIVISION

OCT 25 1955

2095