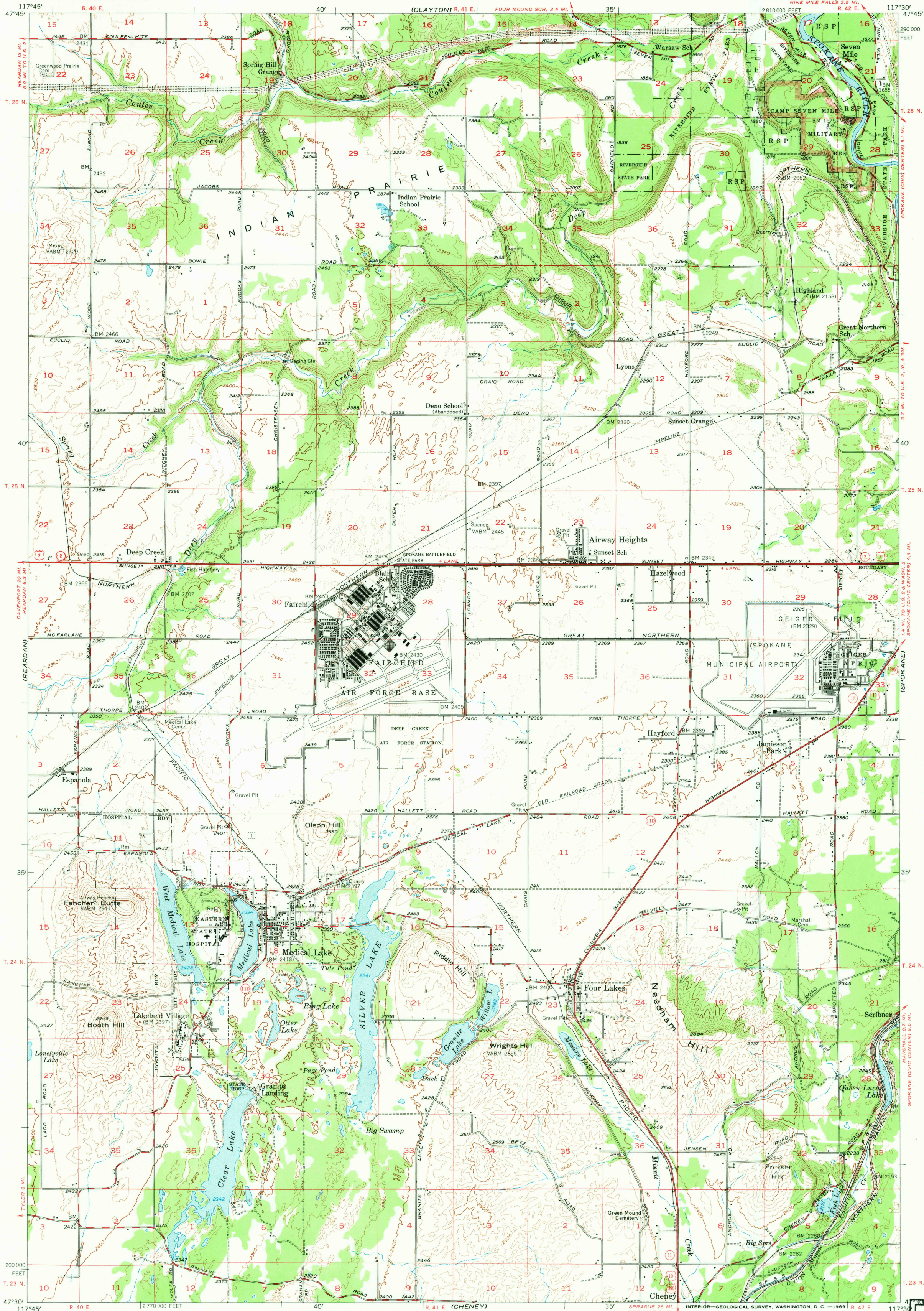


(WELLPINT)

UNITED STATES
DEPARTMENT OF THE INTERIOR
GEOLOGICAL SURVEY

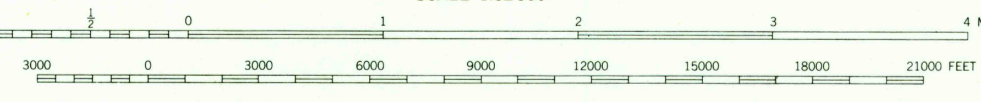
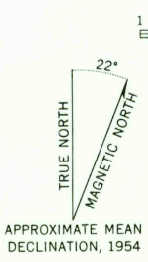
MEDICAL LAKE QUADRANGLE
WASHINGTON-SPOKANE CO.
15 MINUTE SERIES (TOPOGRAPHIC)

(DEER PARK)



(SPRAGUE)

Mapped, edited, and published by the Geological Survey
Control by USGS and USC&GS
Compiled in 1956 from 1:24,000 scale maps of the Airway Heights, Deep Creek, Medical Lake, and Four Lakes 7.5 minute quadrangles, surveyed in 1954
Polyconic projection. 1927 North American datum
10,000-foot grid based on Washington coordinate system, north zone
Dashed line lines indicate approximate locations



ROAD CLASSIFICATION

Heavy-duty	Light-duty
Medium-duty	Unimproved dirt

U.S. Route State Route

This area is also covered by 1:24,000 scale maps of Airway Heights, Deep Creek, Medical Lake, and Four Lakes 7.5 minute quadrangles, surveyed in 1954

MEDICAL LAKE, WASH.
N4730-W11730/15



THIS MAP COMPLIES WITH NATIONAL MAP ACCURACY STANDARDS
FOR SALE BY U. S. GEOLOGICAL SURVEY, FEDERAL CENTER, DENVER, COLORADO OR WASHINGTON 25, D. C.
A FOLDER DESCRIBING TOPOGRAPHIC MAPS AND SYMBOLS IS AVAILABLE ON REQUEST

U.S.G.S.
FILE COPY
TOPOGRAPHIC DIVISION

2625
JUL 1 1969

1954