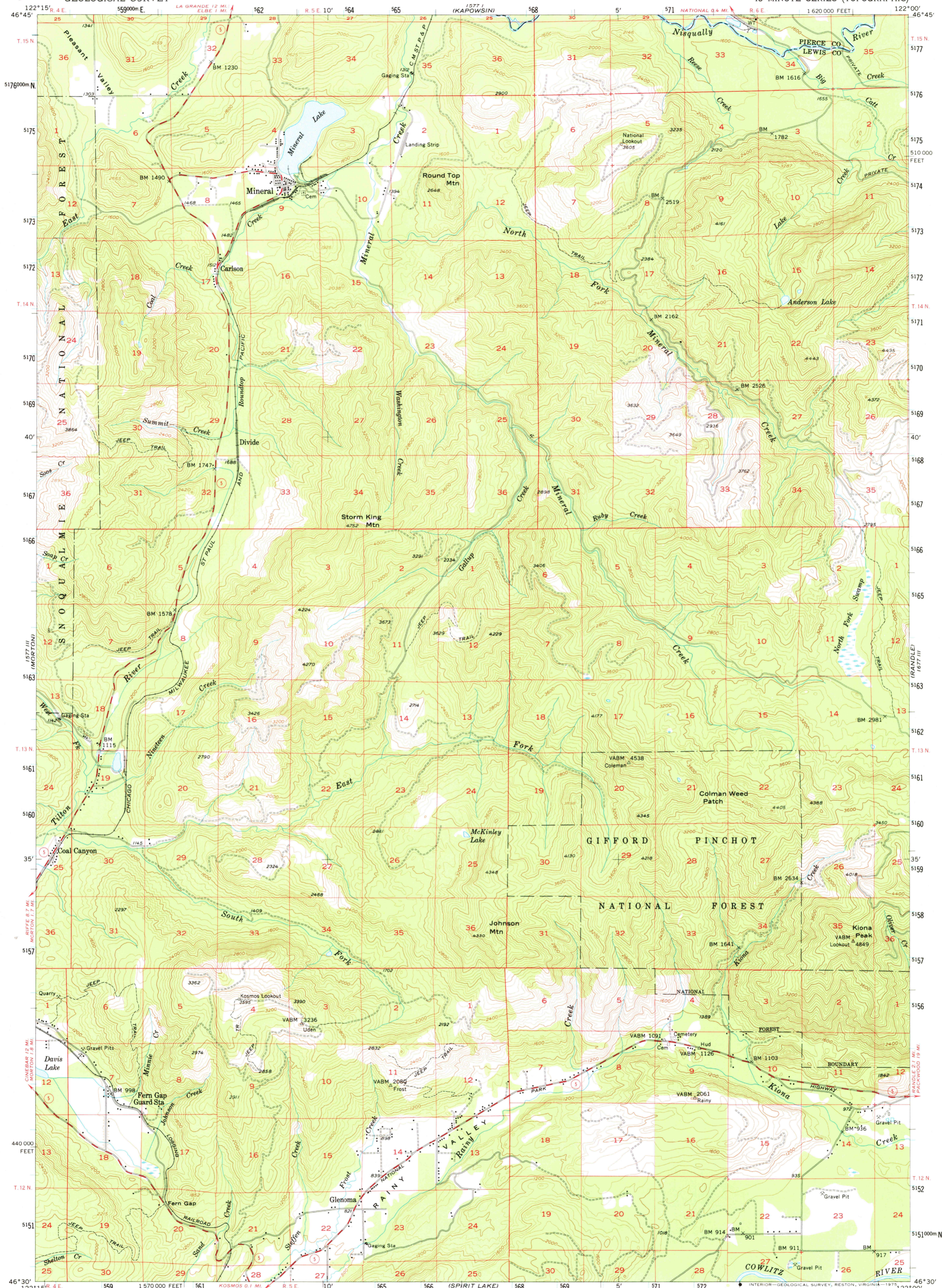


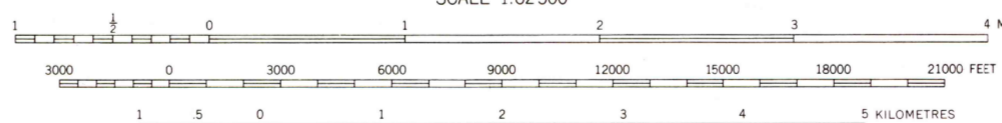
UNITED STATES  
DEPARTMENT OF THE INTERIOR  
GEOLOGICAL SURVEY

MINERAL QUADRANGLE  
WASHINGTON  
15 MINUTE SERIES (TOPOGRAPHIC)



Mapped, edited, and published by the Geological Survey  
Control by USGS and USC&GS  
Topography from aerial photographs by multiplex methods  
Aerial photographs taken 1952. Field check 1956  
Polyconic projection. 1927 North American datum  
10,000-foot grid based on Washington coordinate system,  
south zone  
1000-metre Universal Transverse Mercator grid ticks,  
zone 10, shown in blue  
Unchecked elevations are shown in brown

UTM GRID AND 1986 MAGNETIC NORTH  
DECLINATION AT CENTER OF SHEET



CONTOUR INTERVAL 80 FEET  
NATIONAL GEODETIC VERTICAL DATUM OF 1929



ROAD CLASSIFICATION  
Medium-duty ——— Light-duty ———  
Unimproved dirt - - - - -  
State Route ○

MINERAL, WASH.  
N4630—W12200/15

1956  
AMS 1577 II—SERIES V791

FOR SALE BY U.S. GEOLOGICAL SURVEY, DENVER, COLORADO 80225, OR RESTON, VIRGINIA 22092  
A FOLDER DESCRIBING TOPOGRAPHIC MAPS AND SYMBOLS IS AVAILABLE ON REQUEST

TOPOGRAPHIC DIVISION

JUN 13 1975

3/4