

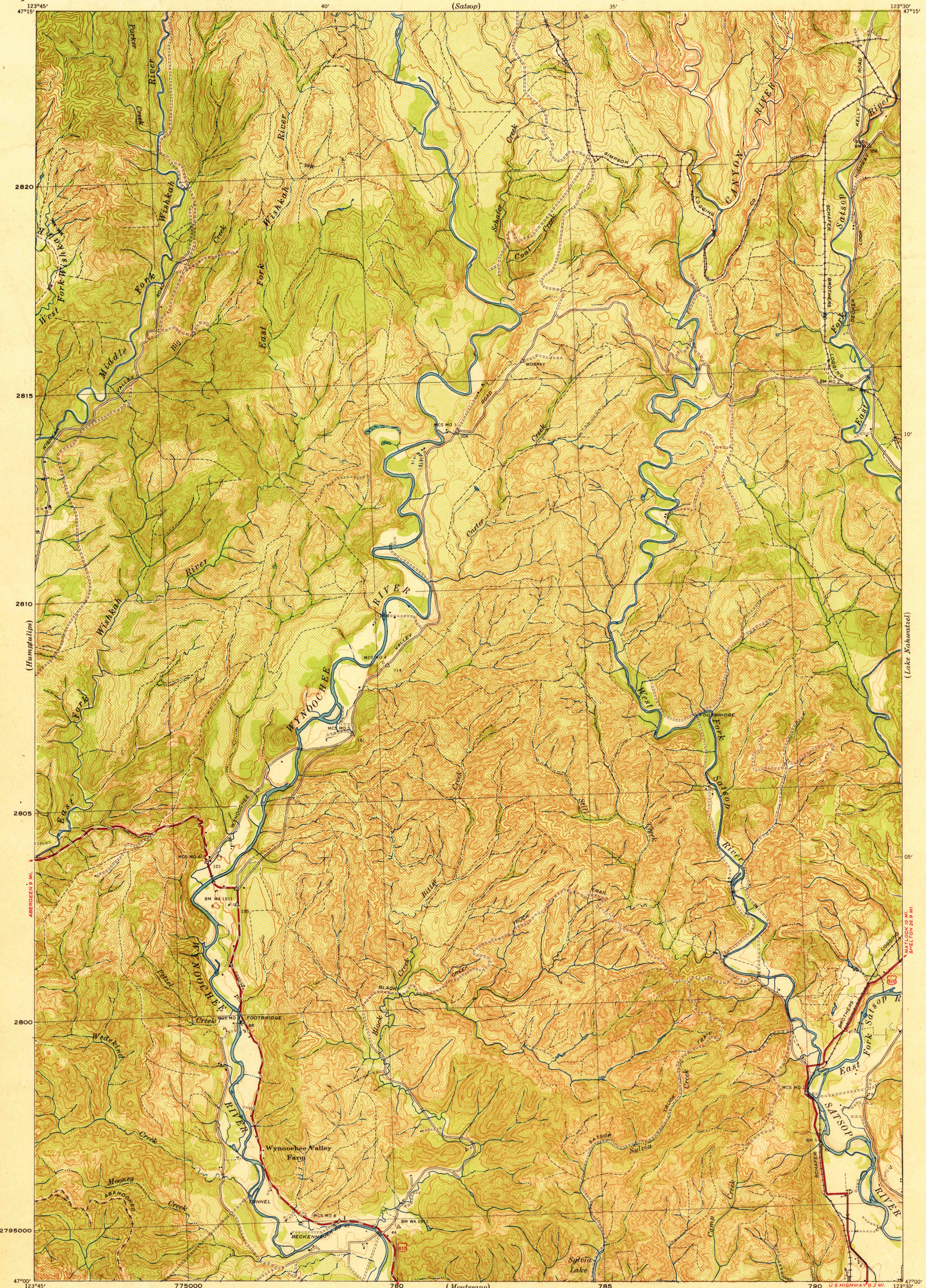
(Quinnell Lake)

CORPS OF ENGINEERS, U. S. ARMY
TACTICAL MAP

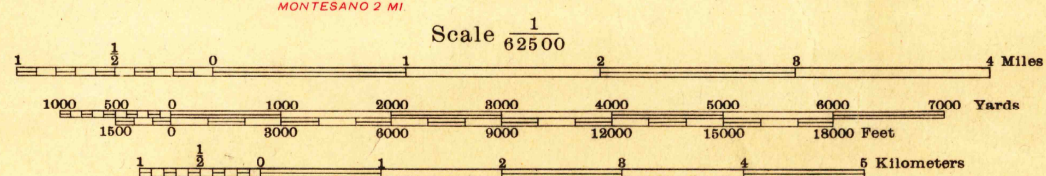
Advance Sheet.
Subject to Correction

WASHINGTON
MOBRAY QUADRANGLE
GRID ZONE "G"

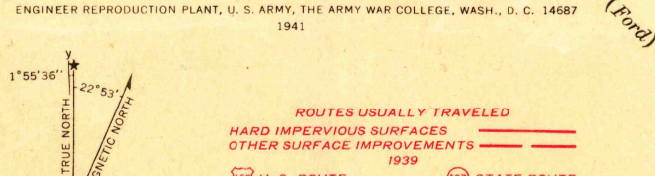
(Mohrweia)



Prepared under the direction of the Chief of Engineers, U. S. Army, 1939.
Horizontal control by 29th Engineers, U. S. Army, 1937.
Vertical control by U. S. Geological Survey, 1911 and 29th Engineers, U. S. Army, 1937.
Topography by 29th Engineers, U. S. Army, 1939, from 5 lens aerial photographs using multiplex aero-projector.
Photography by 91st Observation Squadron, Air Corps, U. S. Army, 1937.
Polyconic Projection, North American Datum 1927.



Contour interval 20 feet
Datum is mean sea level (1929 Gen. Adj.)
FIVE THOUSAND YARD GRID COMPUTED FROM "GRID SYSTEM FOR PROGRESSIVE MAPS IN THE U. S." ZONE G, U. S. C. & G. S. SPECIAL PUBLICATION NO. 59 (THE LAST THREE DIGITS OF THE GRID NUMBERS ARE OMITTED)
NOTE: OFFICERS USING THIS MAP WILL MARK HEREON CORRECTIONS AND ADDITIONS WHICH COME TO THEIR ATTENTION AND MAIL DIRECT TO: THE CHIEF OF ENGINEERS, WASHINGTON, D. C.



*MOBRAY, WASH.
N4700-W12330/15

USCS
Historical File
Topographic Division

* NAME CHANGED TO / WYNOOCHEE VALLEY ON MAP (15) DATED 1955