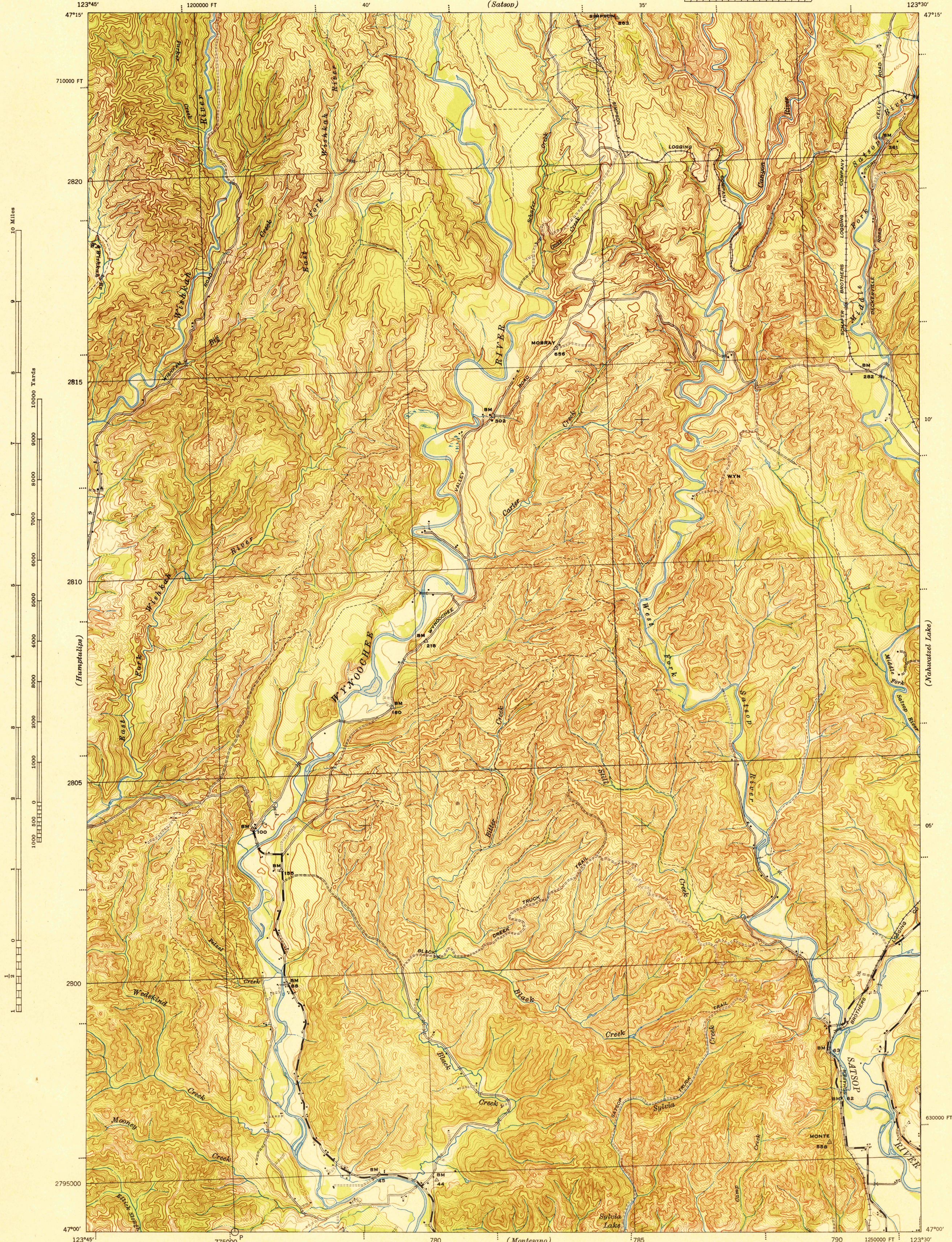


WASHINGTON
GRAYS HARBOR COUNTY
MOBRAY QUADRANGLE
GRID ZONE "G"

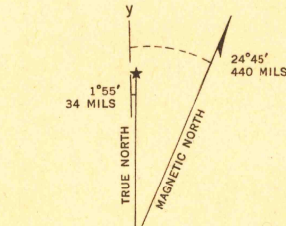
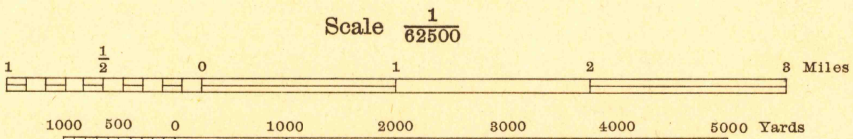
WAR DEPARTMENT
CORPS OF ENGINEERS, U. S. ARMY

WASHINGTON
GRAYS HARBOR COUNTY
MOBRAY QUADRANGLE
GRID ZONE "G"

15 MINUTE SERIES



Prepared under the direction of the Chief of Engineers, U. S. Army, 1939.
Horizontal control by 29th Engineers, U. S. Army, 1937.
Vertical control by U. S. Geological Survey, 1911 and 29th Engineers, U. S. Army, 1937.
Topography by 29th Engineers, U. S. Army, 1939, utilizing multiplex aero-projectors, from T-3A
(5 lens) aerial photographs.
Photography by 91st Observation Squadron, Air Corps, U. S. Army, 1937.
Polyconic Projection, North American 1927 Datum.



29TH ENGINEER REPRODUCTION PLANT, PORTLAND, OREGON
AMS NO. 101773
1943

ROAD CLASSIFICATIONS
Dependable hard surface, heavy duty road
Secondary, hard surface, all weather road
More than two lanes indicated by note with tick at point of change.
Road Data 1942
Loose surface graded, dry weather road
Dirt road
U. S. Route 1
State Route 100
3 LANE 4 LANE

LOGGED OFF
FIVE THOUSAND YARD GRID COMPUTED FROM "GRID SYSTEM FOR PROGRESSIVE MAPS IN THE U. S. ZONE 'G' U. S. C. & G. S. SPECIAL PUBLICATION NO. 59 (THE LAST THREE DIGITS OF THE GRID NUMBERS ARE OMITTED)
THE STATE GRIDS ARE INDICATED FOR WASHINGTON SOUTH BY DOTTED TICKS OUTSIDE THE NEAT LINE AT 10,000 FOOT INTERVALS
NOTE: OFFICERS USING THIS MAP WILL MARK HEREON CORRECTIONS AND ADDITIONS WHICH COME TO THEIR ATTENTION AND MAIL DIRECT TO "THE CHIEF OF ENGINEERS, WASHINGTON, D. C."

APPROXIMATE MEAN DECLINATION 1943
FOR CENTER OF SHEET
ANNUAL MAGNETIC CHANGE 2" DECREASE
USE DIAGRAM ONLY TO OBTAIN NUMERICAL VALUES. TO DETERMINE MAGNETIC NORTH LINE, CONNECT THE PIVOT POINT "P" ON THE SOUTH EDGE OF THE MAP WITH THE VALUE OF THE ANGLE BETWEEN GRID AND MAGNETIC NORTH AS PLOTTED ON THE DEGREE SCALE AT THE NORTH EDGE OF THE MAP.

MOBRAY, WASH.
N4700-W12330/15

U. S. A. S.
FILE COPY
Inspection and Editing

* NAMED CHANGED TO WYNOOCHEE VALLEY ON 15' MAP DATED 1955