

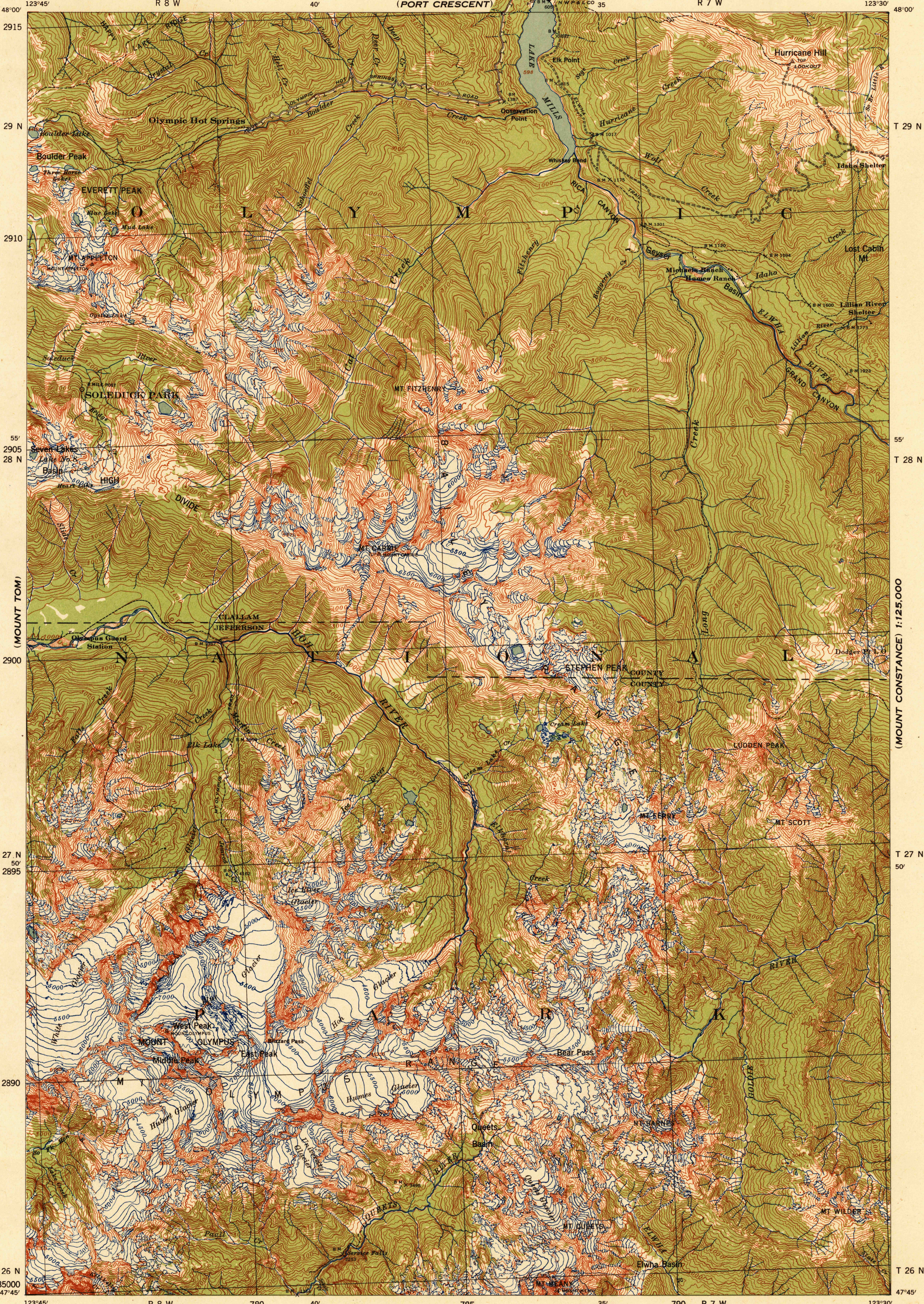
WASHINGTON
MOUNT OLYMPUS, QUADRANGLE

WAR DEPARTMENT
CORPS OF ENGINEERS, U. S. ARMY
(PORT CRESCENT)

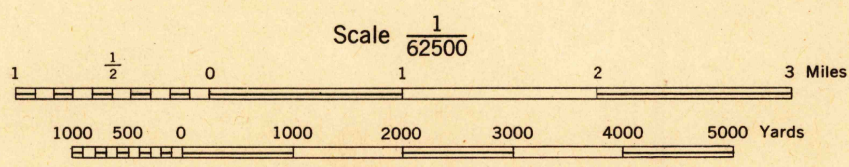
WASHINGTON
MOUNT OLYMPUS, QUADRANGLE

GRID ZONE "G" R 8 W

GRID ZONE "G" R 7 W



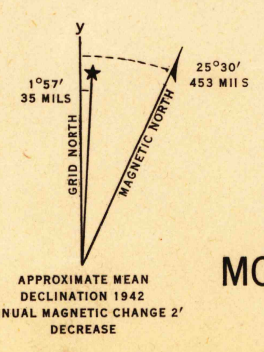
Prepared under the direction of the Chief of Engineers, U. S. Army. Horizontal control by U. S. Coast and Geodetic Survey, 1913-1914 and U. S. Geological Survey, 1928. Vertical control by U. S. Geological Survey, 1926-1933. Topography by Corps of Engineers, Wright Field Detachment, U. S. Army, 1935, by stereoscopic plotting instruments from aerial photographs by U. S. Army Air Corps, 1933. Drafted by Wright Field Detachment, photo-lithographed by Engineer Reproduction Plant. Polyconic Projection, North American Datum 1927.



CONTOUR INTERVAL 100 FEET
DATUM IS MEAN SEA LEVEL

ROAD CLASSIFICATIONS
Dependable hard surface, heavy duty road. Loose surface graded, dry weather road. U. S. Route 54. Secondary, hard surface, all weather road. Unimproved road. State Route 154. More than two lanes indicated by note along road with tick at point of change. 3 LANE | 4 LANE

FIVE THOUSAND YARD GRID COMPUTED FROM GRID SYSTEM FOR PROGRESSIVE MAPS IN THE U. S. ZONE G, U. S. C. & G. S. SPECIAL PUBLICATION NO. 59. THE LAST THREE DIGITS OF THE GRID NUMBERS ARE OMITTED. NOTE: OFFICERS USING THIS MAP WILL MARK HEREON CORRECTIONS AND ADDITIONS WHICH COME TO THEIR ATTENTION AND MAIL DIRECT TO "THE CHIEF OF ENGINEERS, WASHINGTON, D. C."



ENGINEER REPRODUCTION PLANT, U. S. ARMY, WASHINGTON, D. C., 12136 1942

USGS
Historical File
Topographic Division

MOUNT OLYMPUS, WASH.
N4745-W12330/15

(LAKE CRESCENT)

PORT ANGELES 10.5 MI.

(PORT ANGELES)

(MOUNT CONSTANCE) 1:125,000

(MT CONSTANCE) 1:125,000