

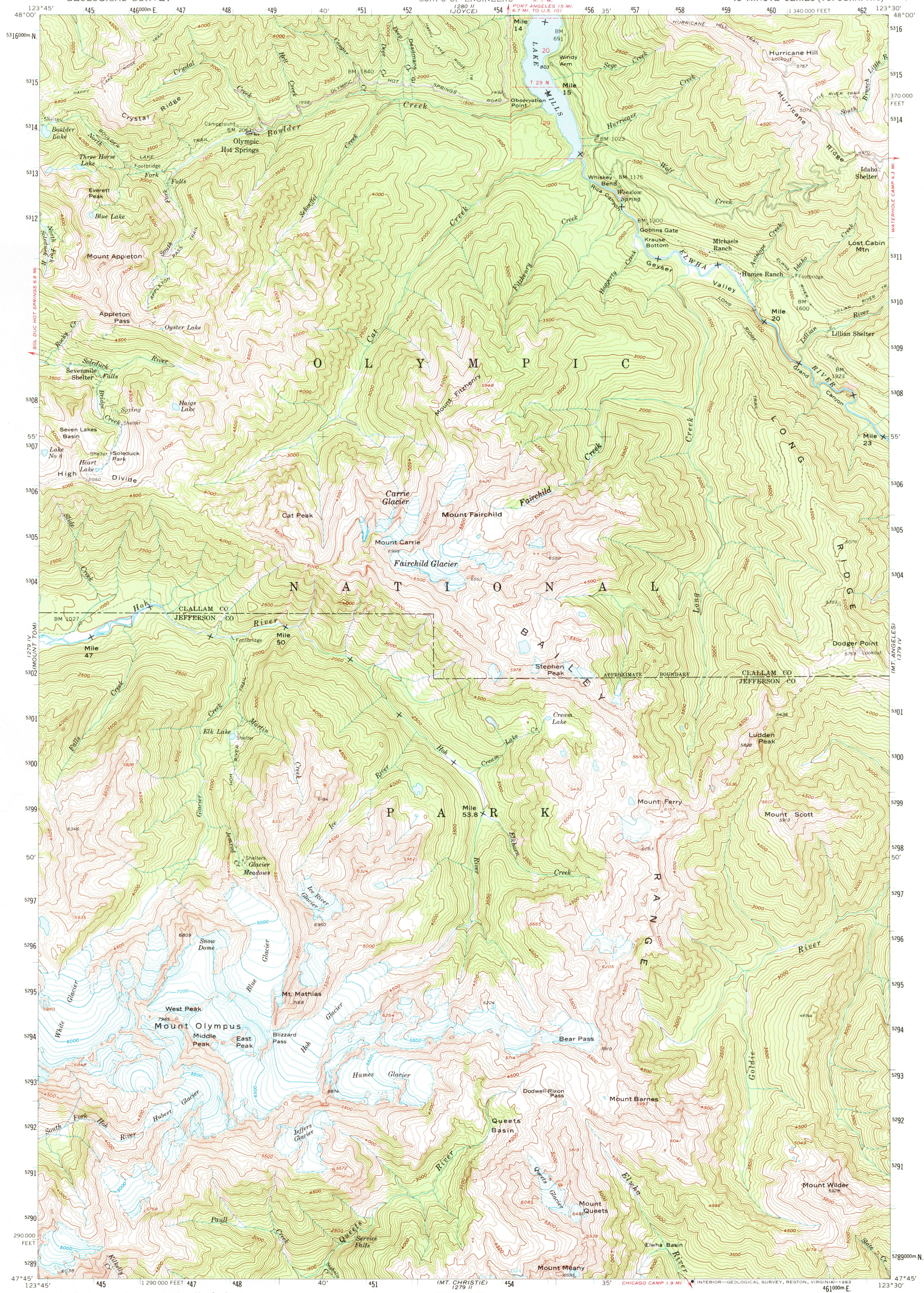
LAKE CRESSENT
1290 111

UNITED STATES
DEPARTMENT OF THE INTERIOR
GEOLOGICAL SURVEY

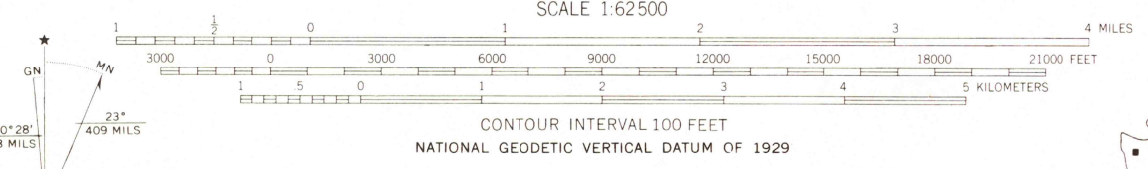
UNITED STATES
DEPARTMENT OF THE ARMY
CORPS OF ENGINEERS

MOUNT OLYMPUS QUADRANGLE
WASHINGTON
15 MINUTE SERIES (TOPOGRAPHIC)

1290 111
PORT ANGELES



Mapped by the Geological Survey and the Army Map Service
Edited and published by the Geological Survey
Control by USGS, USAC&GS, and USCF
Topography from aerial photographs by photogrammetric methods
Aerial photographs taken 1943 and 1955
North half revised and south half advance field checked
by the Geological Survey 1956
Polyconic projection. 1927 North American datum
10,000-foot grid based on Washington coordinate system,
north zone
1000-meter Universal Transverse Mercator grid ticks,
zone 10, shown in blue
To place on the predicted North American Datum 1983
move the projection lines 24 meters north and
96 meters east
Dashed land lines indicate approximate location
Certain land lines are omitted because of insufficient data
There may be private inholdings within the boundaries of
the National or State reservations shown on this map



ROAD CLASSIFICATION
Light duty —————
Unimproved dirt - - - - -



The north half of this area is also covered by 1:24,000
scale maps of Hurricane Hill and Mount Carrie
7.5 minute quadrangles, surveyed 1950
MOUNT OLYMPUS, WASH.
N4745—W12330/15

THIS MAP COMPLIES WITH NATIONAL MAP ACCURACY STANDARDS
FOR SALE BY U.S. GEOLOGICAL SURVEY, DENVER, COLORADO 80225, OR RESTON, VIRGINIA 22092
A FOLDER DESCRIBING TOPOGRAPHIC MAPS AND SYMBOLS IS AVAILABLE ON REQUEST

1956
DMA 1279 I—SERIES V791

RETURN TO:
USGS AND HISTORICAL MAP ARCHIVES