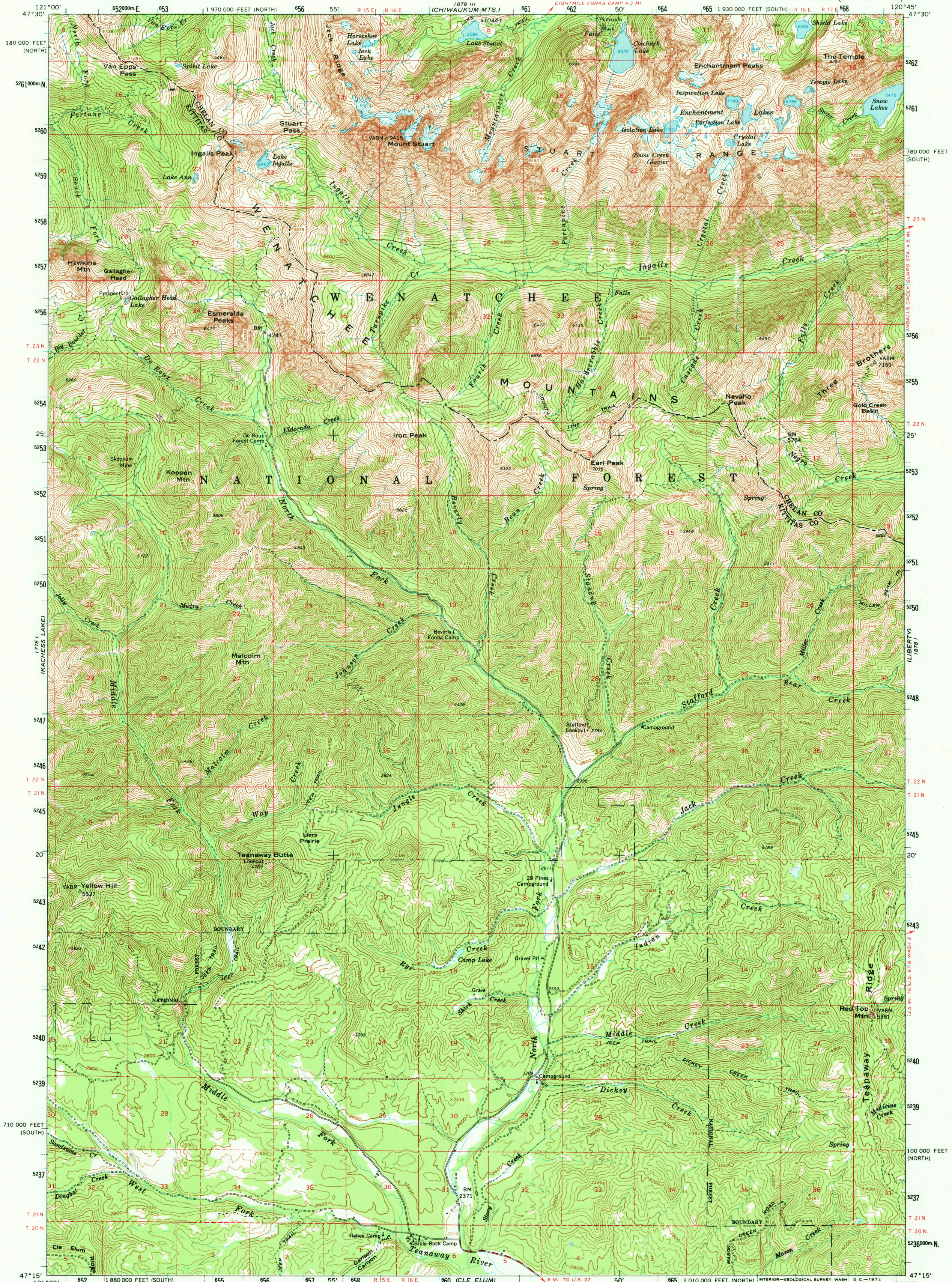
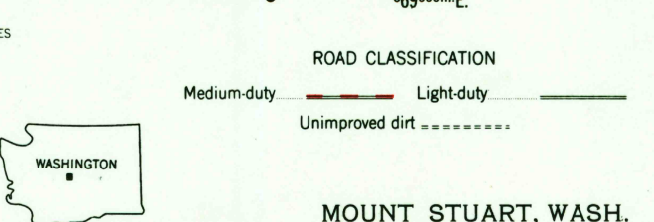
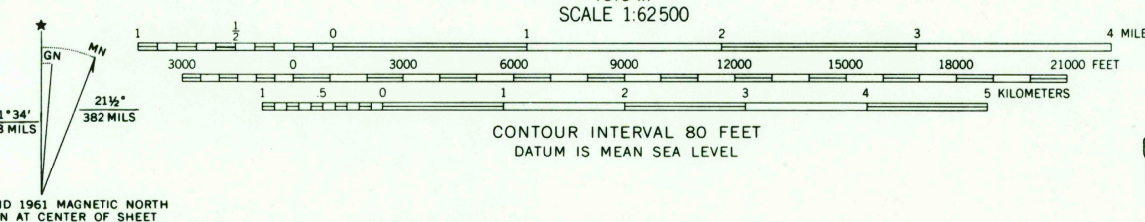


UNITED STATES  
DEPARTMENT OF THE INTERIOR  
GEOLOGICAL SURVEY

MOUNT STUART QUADRANGLE  
WASHINGTON  
15 MINUTE SERIES (TOPOGRAPHIC)



Mapped, edited, and published by the Geological Survey  
Control by USGS and USC&GS  
Topography by photogrammetric methods from aerial  
photographs taken 1957. Field checked 1961  
Polyconic projection. 1927 North American datum  
10,000-foot grid based on Washington coordinate system,  
south and north zones  
1000-meter Universal Transverse Mercator grid ticks,  
zone 10, shown in blue



THIS MAP COMPLIES WITH NATIONAL MAP ACCURACY STANDARDS  
FOR SALE BY U. S. GEOLOGICAL SURVEY, DENVER, COLORADO 80225 OR WASHINGTON, D. C. 20242  
A FOLDER DESCRIBING TOPOGRAPHIC MAPS AND SYMBOLS IS AVAILABLE ON REQUEST

MOUNT STUART, WASH.  
N4715—W12045/15  
1961  
AMS 1878 IV—SERIES V791

USGS  
HISTORICAL FILE  
TOPOGRAPHIC DIVISION

10400  
NOV 8 0 1972