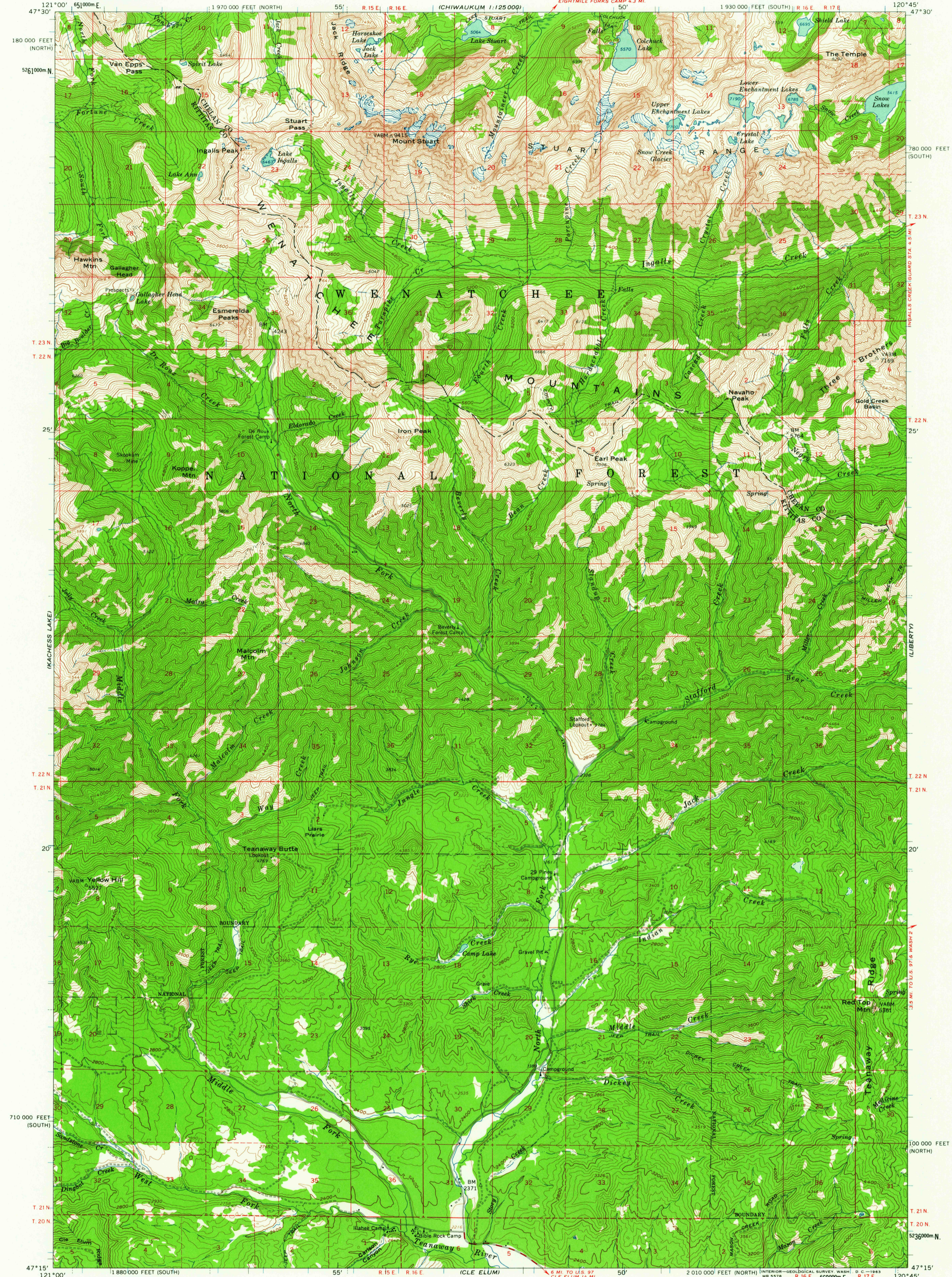


1:125,000

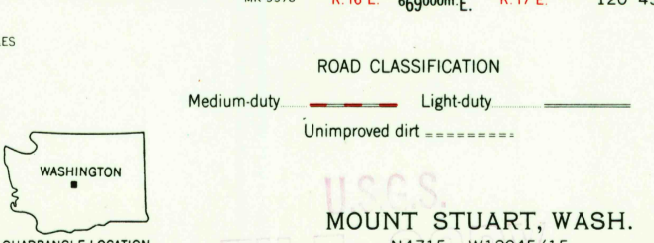
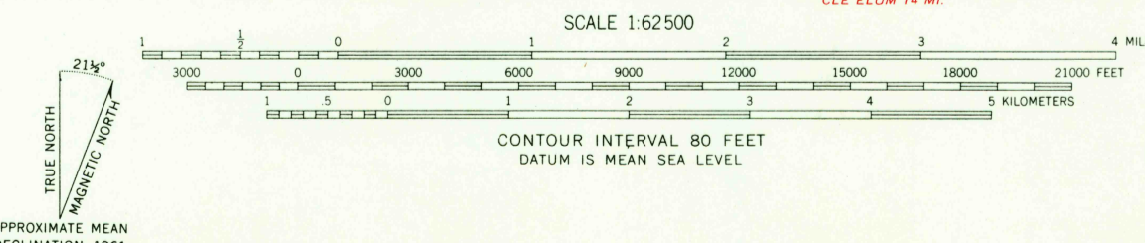
UNITED STATES DEPARTMENT OF THE INTERIOR GEOLOGICAL SURVEY

MOUNT STUART QUADRANGLE WASHINGTON 15 MINUTE SERIES (TOPOGRAPHIC)

1:125,000



Mapped, edited, and published by the Geological Survey Control by USGS and USC&GS. Topography by photogrammetric methods from aerial photographs taken 1957. Field checked 1961. Polyconic projection. 1927 North American datum 10,000-foot grid based on Washington coordinate system, south and north zones. 1000-meter Universal Transverse Mercator grid ticks, zone 10, shown in blue.



FOR SALE BY U. S. GEOLOGICAL SURVEY, DENVER 25, COLORADO OR WASHINGTON 25, D. C. A FOLDER DESCRIBING TOPOGRAPHIC MAPS AND SYMBOLS IS AVAILABLE ON REQUEST

USGS MOUNT STUART, WASH. N4715-W12045/15 1961

USGS Historical File Topographic Division

APR 1 1963