

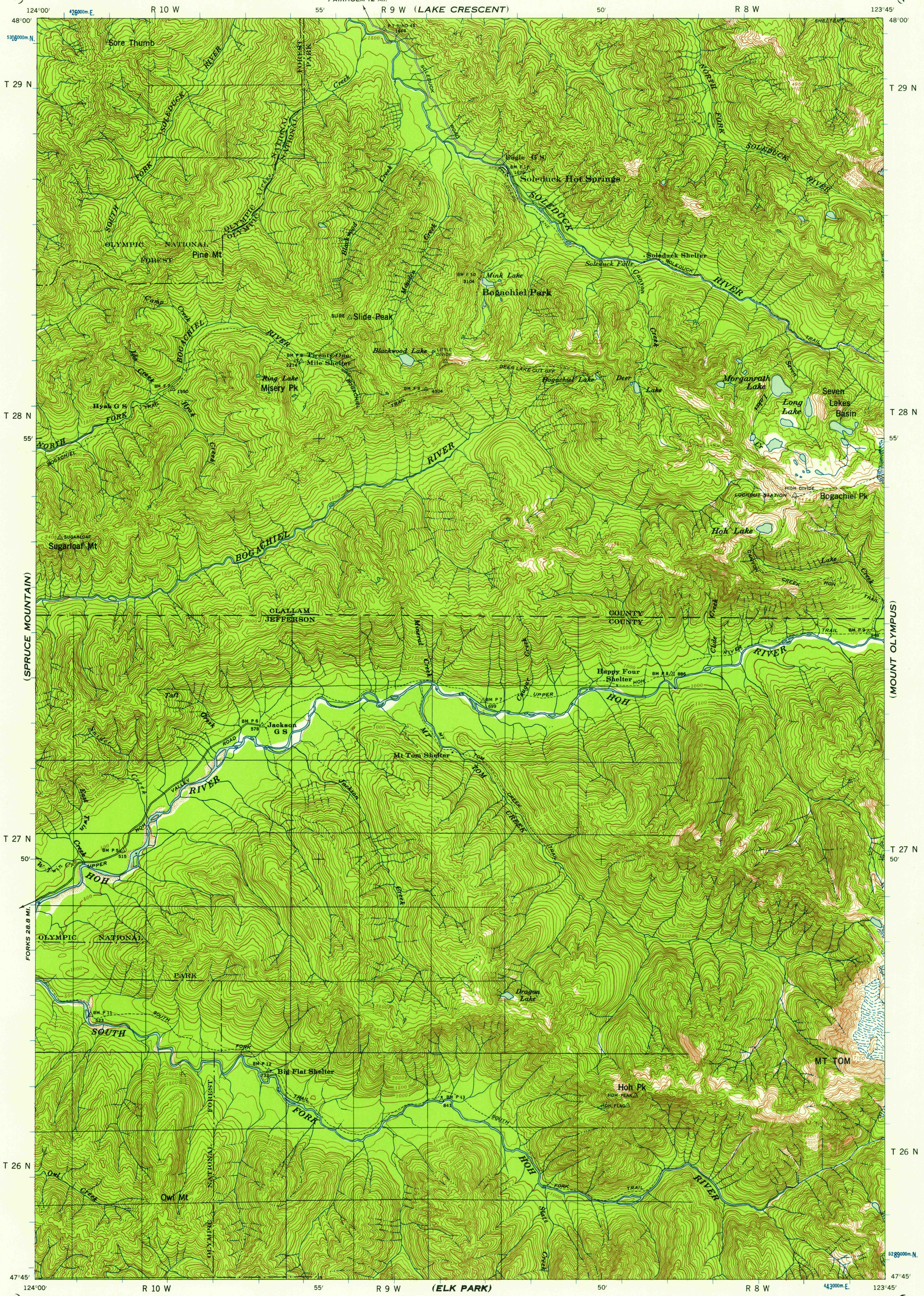
WASHINGTON  
MOUNT TOM QUADRANGLE

WAR DEPARTMENT  
CORPS OF ENGINEERS, U. S. ARMY

WASHINGTON  
MOUNT TOM QUADRANGLE

(PYSHT)

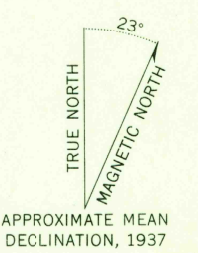
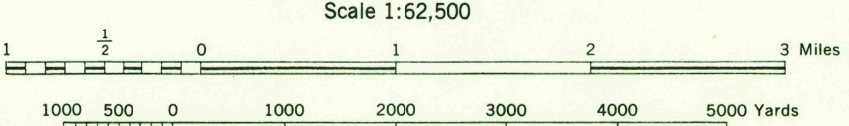
(PORT CRESCENT)



U.S.G.S.  
FILE COPY  
TOPOGRAPHIC DIVISION

U.S.G.S.  
FILE COPY  
TOPOGRAPHIC DIVISION

Prepared under the direction of the Chief of Engineers, U. S. Army, 1935.  
 Horizontal control by U. S. Geological Survey, 1928 and 29th Engineers, U. S. Army, 1936.  
 Vertical control by U. S. Geological Survey, 1917 and 29th Engineers, U. S. Army, 1936.  
 Topography by 29th Engineers, U. S. Army, 1937, from 5-lens aerial photographs, using elevation calculator and stereoscope.  
 Photography by Air Corps, U. S. Army, 1934.  
 Polyconic Projection, North American Datum 1927.



**ROAD CLASSIFICATIONS**

Dependable hard surface, heavy duty road.	Loose surface graded, dry weather road.	U. S. Route (84)
Secondary, hard surface, all weather road.	Unimproved road.	Slate Route (154)
More than two lanes indicated by note along road with tick at point of change. 3 LANE   4 LANE		

CONTOUR INTERVAL 100 FEET  
 DATUM IS MEAN SEA LEVEL

ONE THOUSAND METER UNIVERSAL TRANSVERSE MERCATOR GRID TICKS, ZONE 10, SHOWN IN BLUE

REPRINTED FROM MILITARY EDITION FOR CIVIL USE  
 FOR SALE BY U. S. GEOLOGICAL SURVEY, DENVER 2, COLORADO OR WASHINGTON 25, D. C.  
 A FOLDER DESCRIBING TOPOGRAPHIC MAPS AND SYMBOLS IS AVAILABLE ON REQUEST

INTERIOR—GEOLOGICAL SURVEY, WASHINGTON, D. C.—1957

USGS  
 Historical File  
 Topographic Division  
 MOUNT TOM, WASH.  
 N4745-W12345/15

MAP 29 57

1155