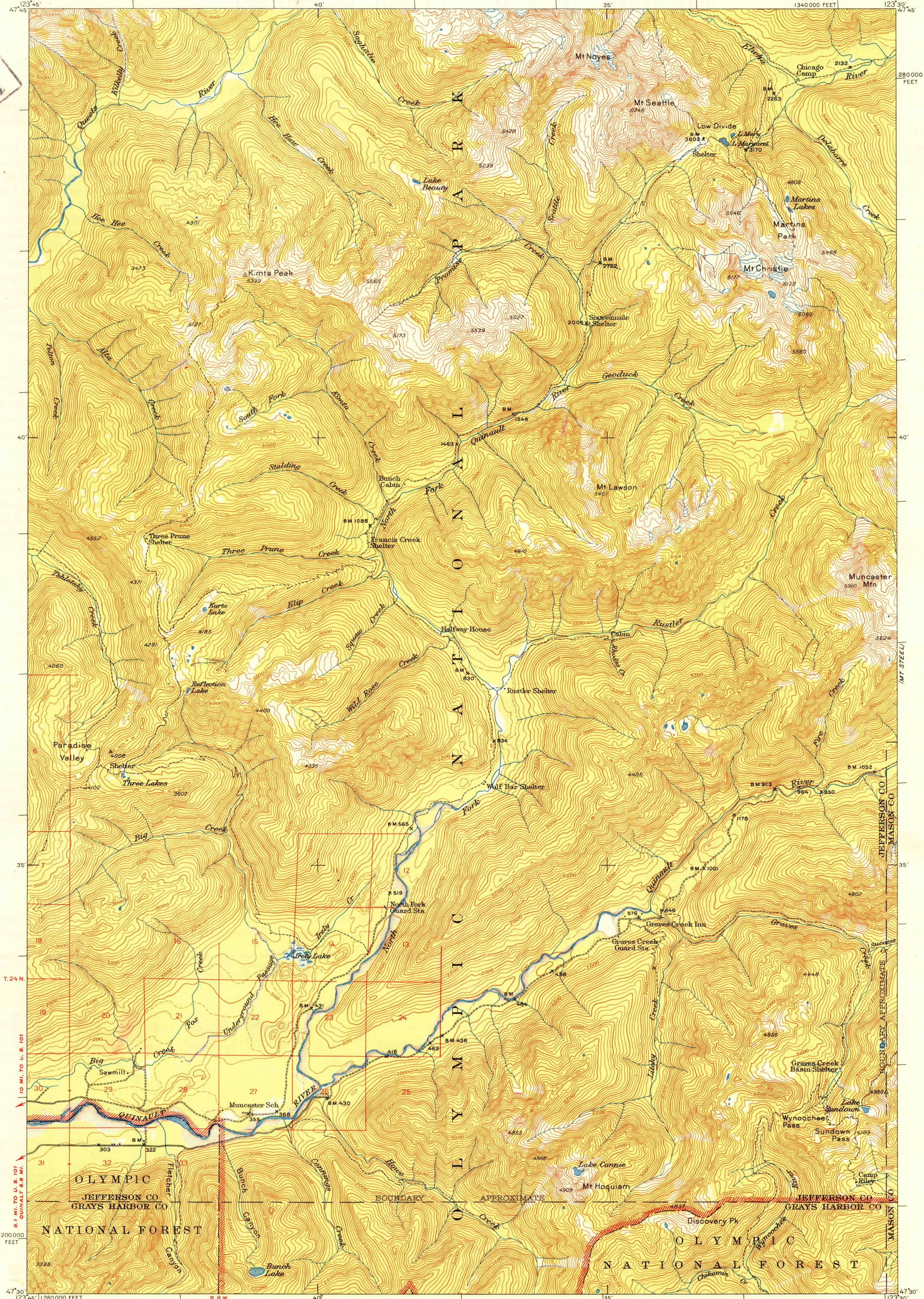
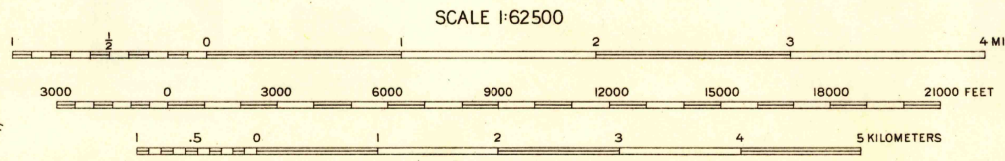
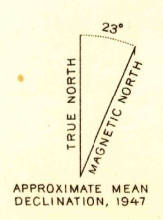


U.S.G.S.
FILE COPY
Inspection and Mailing



Mapped, edited and published by the Geological Survey
Control by USGS and USC&GS
Topography from aerial photographs by multiplex methods
Aerial photographs taken 1939. Field check 1947
Polyconic projection, 1927 North American datum
10,000-foot grids based on Washington coordinate system
north zone



CONTOUR INTERVAL 100 FEET
DASHED LINES REPRESENT HALF-INTERVAL CONTOURS
DATUM IS MEAN SEA LEVEL
THIS MAP COMPLIES WITH NATIONAL MAP ACCURACY STANDARDS
FOR SALE BY U.S. GEOLOGICAL SURVEY WASHINGTON 25, D. C.

ROAD CLASSIFICATION
HARD-SURFACE ALL WEATHER ROADS DRY WEATHER ROADS
Heavy-duty ——— 4 LANE LANE Improved dirt ———
Medium-duty ——— 4 LANE LANE Unimproved dirt ———
Loose-surface graded or narrow hard-surface - - -
U. S. Route State Route

U.S.G.S.
FILE COPY
Inspection and Mailing

MT. CHRISTIE, WASH.
N4730-W12330/15
EDITION OF 1950

USGS
Historical File
Topographic Division