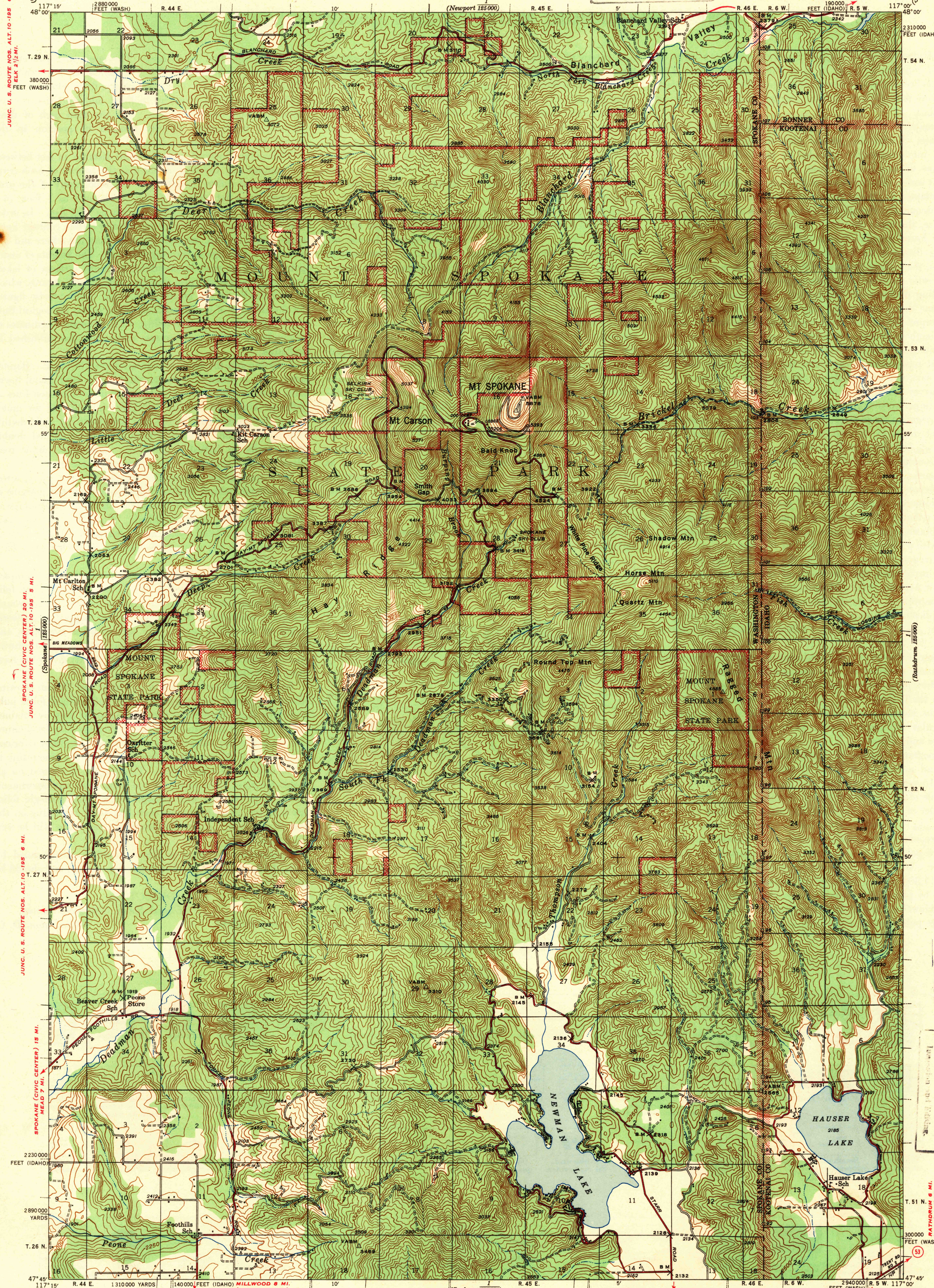


UNITED STATES  
DEPARTMENT OF THE INTERIOR  
GEOLOGICAL SURVEY

WASHINGTON-IDAHO  
MT. SPOKANE QUADRANGLE  
15-MINUTE SERIES



JUNC. U. S. ROUTE NOS. ALT. 10-195 6 MI.  
SPOKANE (CIVIC CENTER) 20 MI.  
JUNC. U. S. ROUTE NOS. ALT. 10-195 5 MI.  
SPOKANE (CIVIC CENTER) 19 MI.  
HEAD 7 MI.  
SPOKANE (CIVIC CENTER) 14 MI.

WASHINGTON-IDAHO  
MT. SPOKANE QUADRANGLE  
15-MINUTE SERIES  
USGS  
Historical File  
Topographic Division  
U. S. G. S.  
FILE COPY  
RATHBURN 6 MI.  
ATHOL 19 1/2 MI.

Topography by R. G. Stevenson  
and E. L. Nelson  
Surveyed in 1939  
Scale 1:62,500  
Contours interval 50 feet  
Datum is mean sea level  
Polyconic projection. 1927 North American datum  
5000 yard grid based on U. S. zone system, G  
10000 foot grids based on Washington (North) and  
Idaho (West) rectangular coordinate systems  
MT. SPOKANE, WASH.-IDAHO  
N 4745-W 11700/15  
Edition of 1943  
FEB 19 1943  
3145