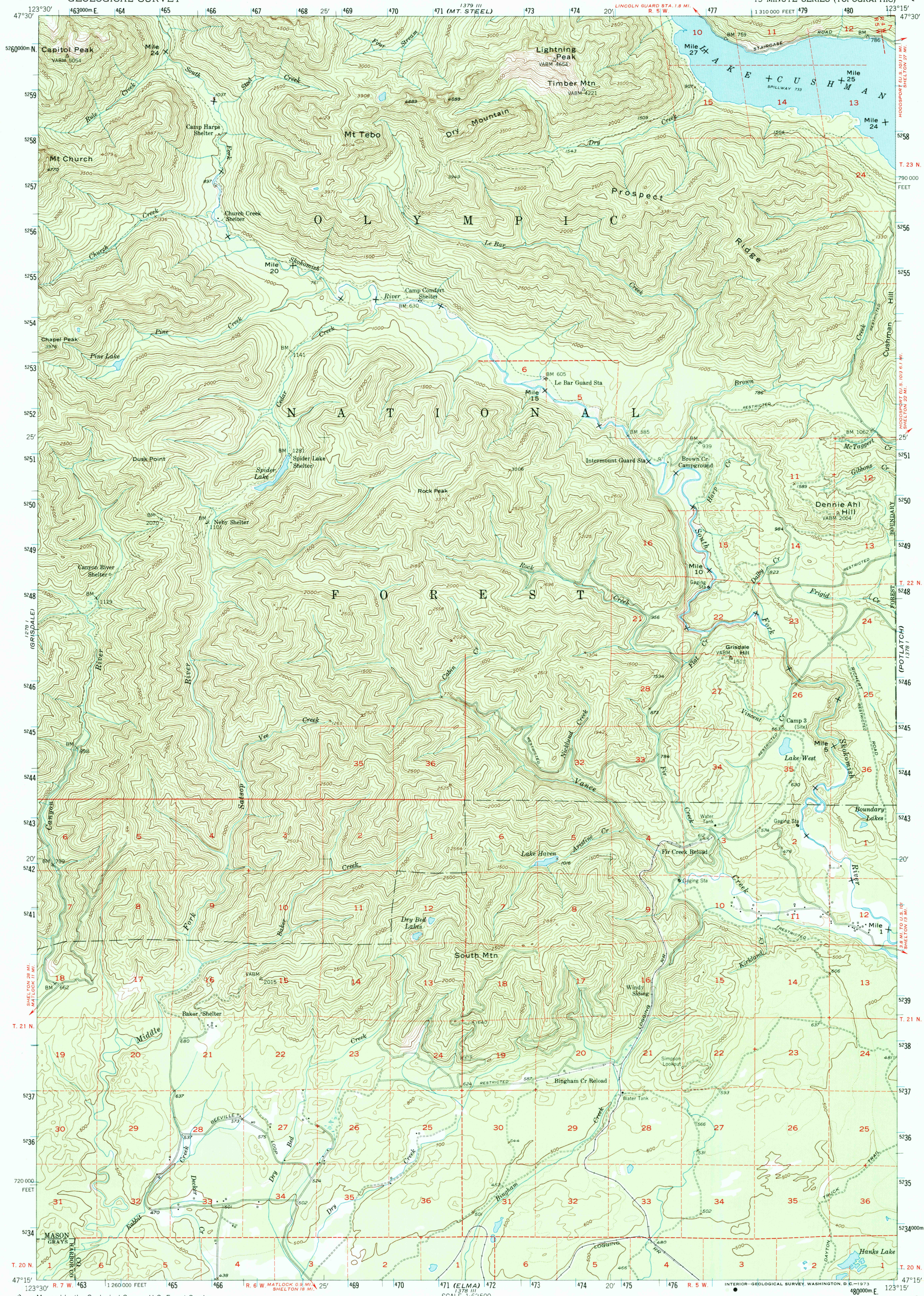


(MT. CHRISTIE)
123° 30' W
1278 II

UNITED STATES
DEPARTMENT OF THE INTERIOR
GEOLOGICAL SURVEY

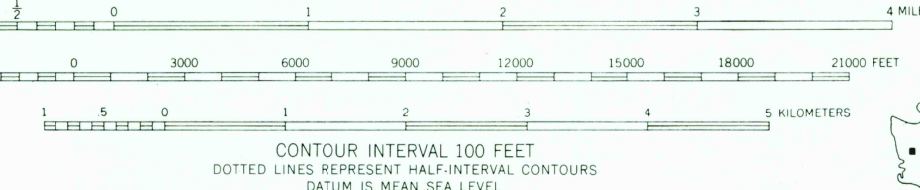
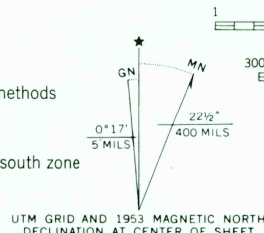
MT. TEBO QUADRANGLE
WASHINGTON
15 MINUTE SERIES (TOPOGRAPHIC)

123° 15' W
1378 I
(THE BROTHERS)



WYNOCHEE VALLEY
1278 II

Map by the Geological Survey, U.S. Forest Service,
and Simpson Logging Company.
Edited and published by the Geological Survey
Control by USGS
Topography from aerial photographs by photogrammetric methods
Aerial photographs taken 1951. Field check 1953
Polyconic projection. 1927 North American datum
10,000-foot grid based on Washington coordinate system, south zone
Dashed land lines indicate approximate locations
Unchecked elevations are shown in brown
1000-meter Universal Transverse Mercator grid ticks,
zone 10, shown in blue



ROAD CLASSIFICATION
Light duty ————— Unimproved dirt - - - - -

MT. TEBO WASH.
N4715-W12315/15

1953

AMS 1378 IV-SERIES V791

FOR SALE BY U. S. GEOLOGICAL SURVEY, DENVER, COLORADO 80225, OR RESTON, VIRGINIA 22092
A FOLDER DESCRIBING TOPOGRAPHIC MAPS AND SYMBOLS IS AVAILABLE ON REQUEST

USGS NMD HISTORICAL
MAY 03 1989
REC'D FILE CO