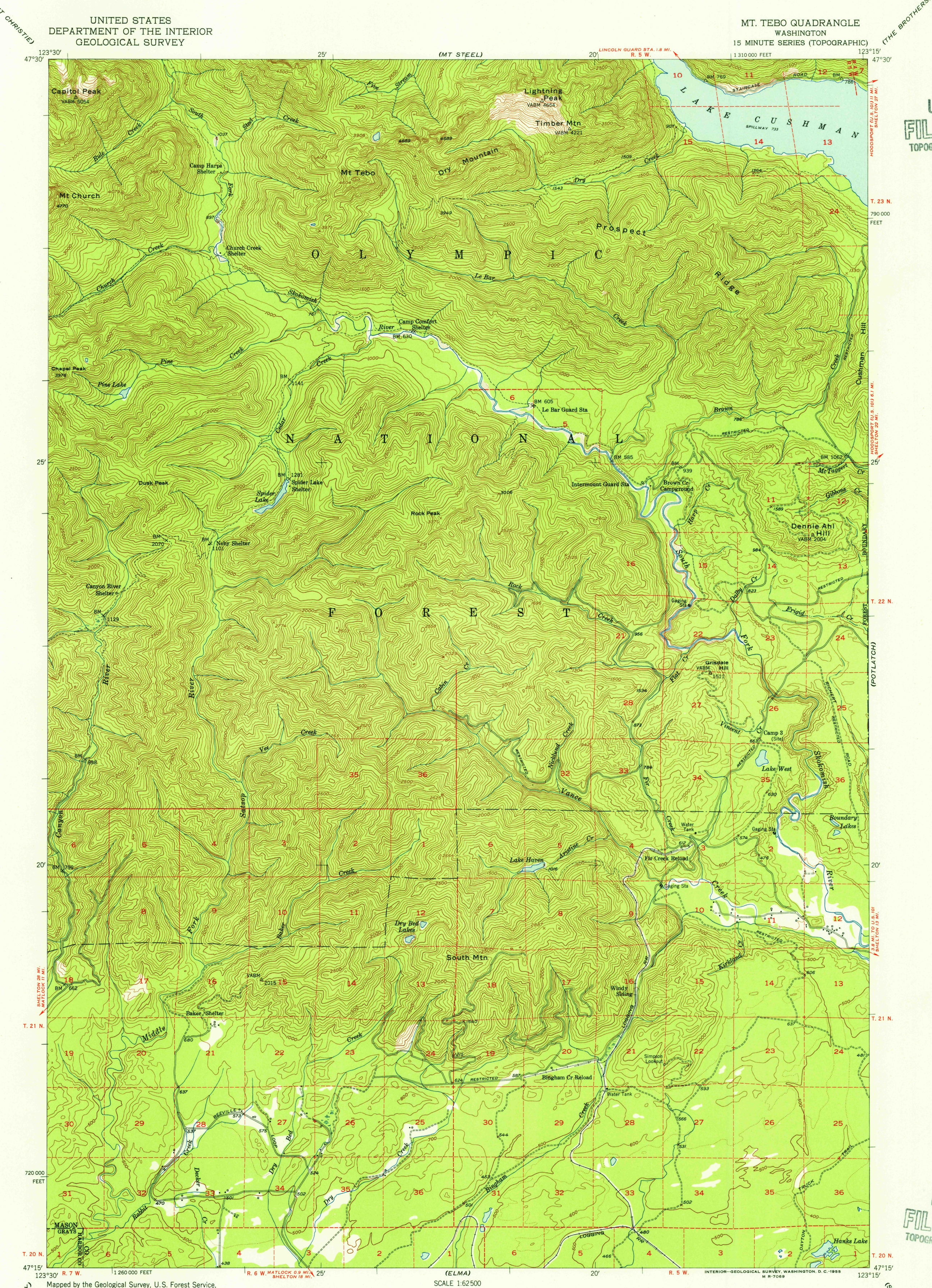


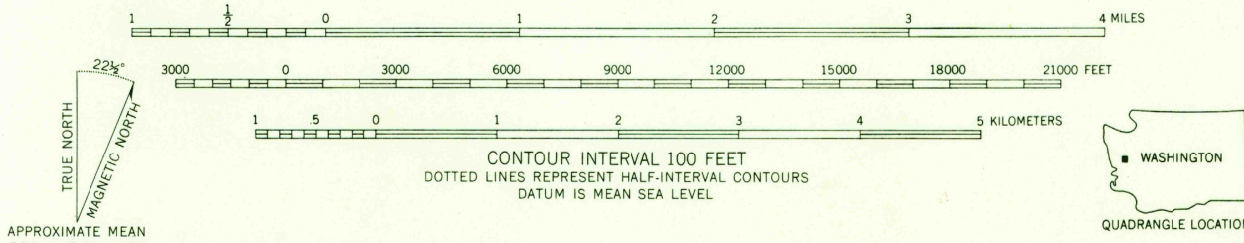
UNITED STATES
DEPARTMENT OF THE INTERIOR
GEOLOGICAL SURVEY

MT. TEBO QUADRANGLE
WASHINGTON
15 MINUTE SERIES (TOPOGRAPHIC)

U.S.G.S.
FILE COPY
TOPOGRAPHIC DIVISION



Map by the Geological Survey, U.S. Forest Service,
and Simpson Logging Company.
Edited and published by the Geological Survey
Control by USGS
Topography from aerial photographs by photogrammetric methods
Aerial photographs taken 1951. Field check 1953
Polyconic projection. 1927 North American datum
10,000-foot grid based on Washington coordinate system, south zone
Dashed land lines indicate approximate locations
Unchecked elevations are shown in brown



ROAD CLASSIFICATION
Heavy-duty ——— 4 LANE 6 LANE Light-duty ———
Medium-duty ——— 4 LANE 6 LANE Unimproved dirt ———
U.S. Route ——— State Route ———

MT. TEBO WASH.
N4715-W12315/15
1953

FOR SALE BY U. S. GEOLOGICAL SURVEY, FEDERAL CENTER, DENVER, COLORADO OR WASHINGTON 25, D. C.
A FOLDER DESCRIBING TOPOGRAPHIC MAPS AND SYMBOLS IS AVAILABLE ON REQUEST

U.S.G.S.
FILE COPY
TOPOGRAPHIC DIVISION

JUN 21 1955

2640