

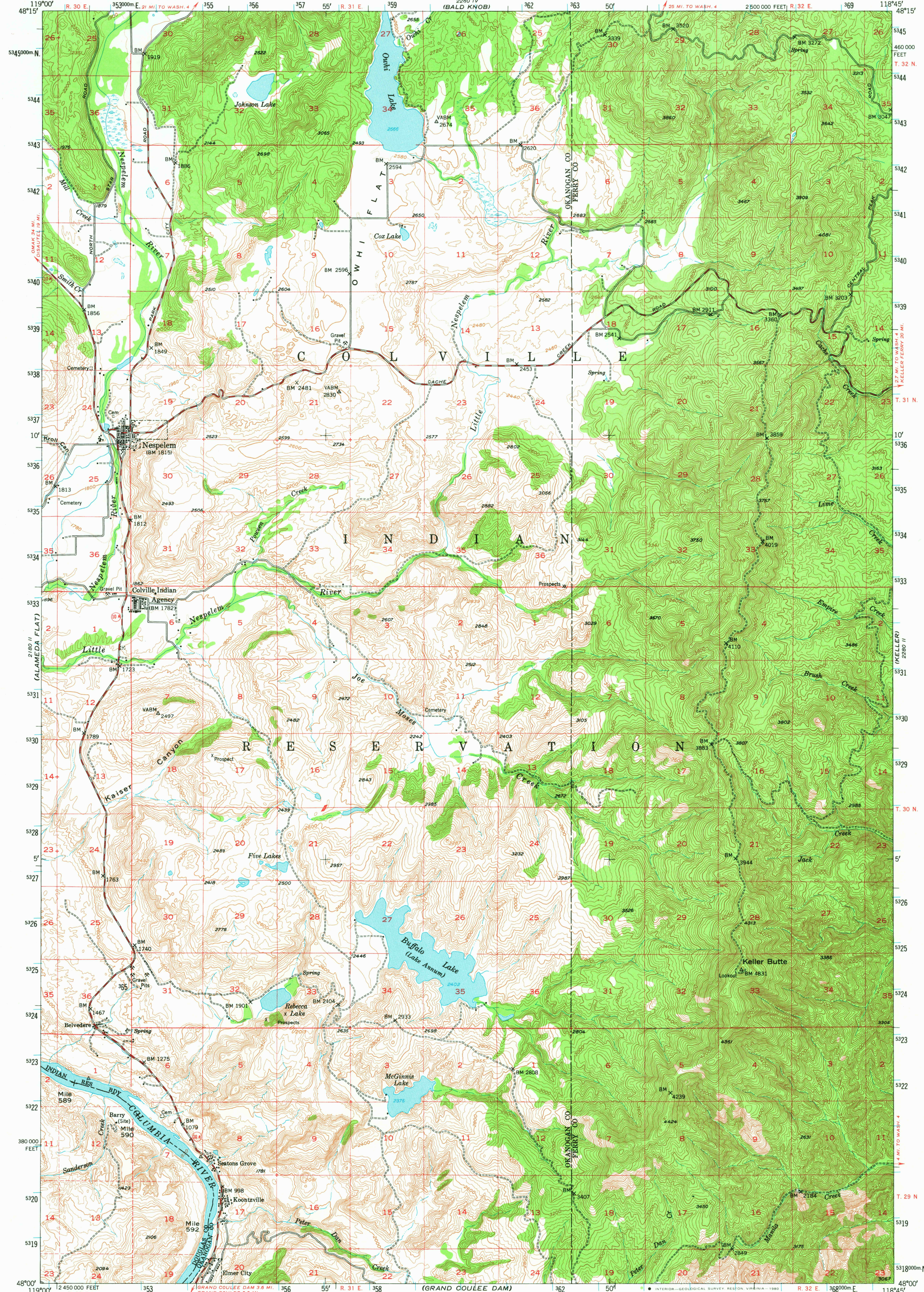
2180 II  
(OSAJUELI)

UNITED STATES  
DEPARTMENT OF THE INTERIOR  
GEOLOGICAL SURVEY

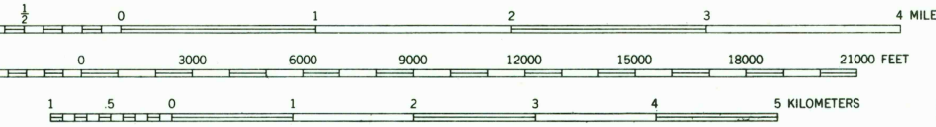
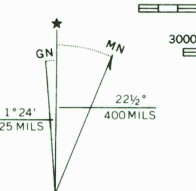
STATE OF WASHINGTON  
DEPARTMENT OF CONSERVATION AND DEVELOPMENT  
DIVISION OF MINES AND GEOLOGY

NESPELEM QUADRANGLE  
WASHINGTON  
15 MINUTE SERIES (TOPOGRAPHIC)

2280 I  
(SEVENTEENMILE MTN)



Mapped, edited, and published by the Geological Survey  
Control by USGS and USC&GS  
Topography from aerial photographs by multiplex methods  
Aerial photographs taken 1946. Field check 1950  
Polyconic projection. 1927 North American datum  
10,000-foot grid based on Washington coordinate system, north zone  
Dashed land lines indicate approximate location  
Unchecked elevations are shown in brown  
1000-meter Universal Transverse Mercator grid ticks, zone 11, shown in blue  
To place on the predicted North American Datum 1983 move the projection lines 18 meters north and 84 meters east  
There may be private inholdings within the boundaries of the National or State reservations shown on this map



CONTOUR INTERVAL 40 FEET  
DOTTED LINES REPRESENT HALF-INTERVAL CONTOURS  
CONTOUR INTERVAL ON RIVER SURFACE 5 FEET  
NATIONAL GEODETIC VERTICAL DATUM OF 1929

THIS MAP COMPLIES WITH NATIONAL MAP ACCURACY STANDARDS  
FOR SALE BY U. S. GEOLOGICAL SURVEY, DENVER, COLORADO 80225, OR RESTON, VIRGINIA 22092  
A FOLDER DESCRIBING TOPOGRAPHIC MAPS AND SYMBOLS IS AVAILABLE ON REQUEST



NESPELEM, WASH.  
N4800-W11845/15  
1950  
DMA 2280 III-SERIES V791

USGS  
Historical File  
Topographic Division

DEC 22 1980

1300