

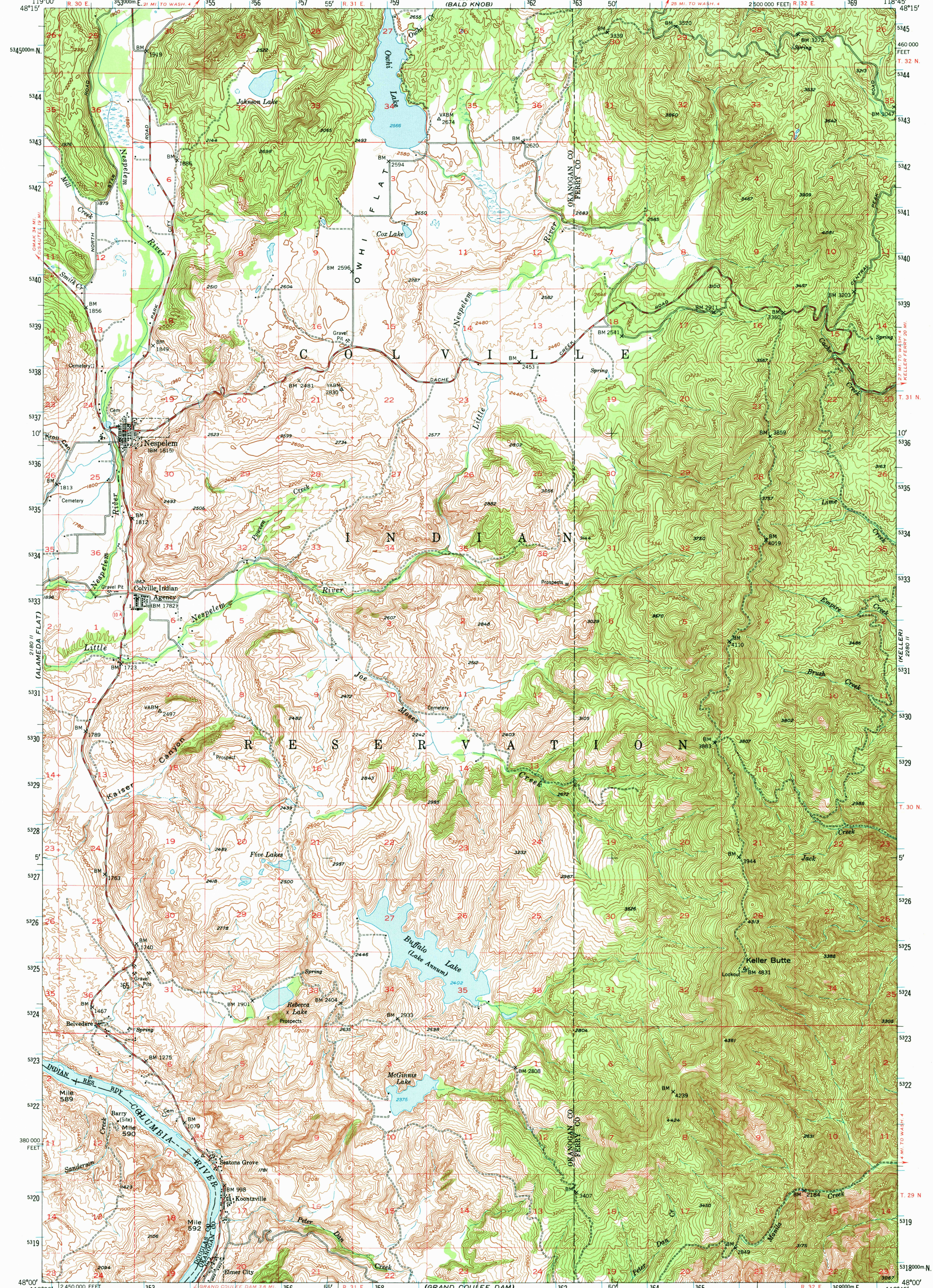
2181
DISTANCE

UNITED STATES
DEPARTMENT OF THE INTERIOR
GEOLOGICAL SURVEY

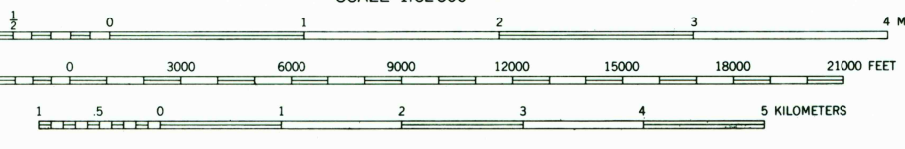
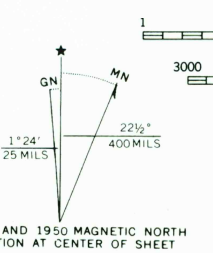
STATE OF WASHINGTON
DEPARTMENT OF CONSERVATION AND DEVELOPMENT
DIVISION OF MINES AND GEOLOGY
(BALD KNOB)

NESPELEM QUADRANGLE
WASHINGTON
15 MINUTE SERIES (TOPOGRAPHIC)

2880
SEVENTEEN MILE MTN



Mapped, edited, and published by the Geological Survey
Control by USGS and USC&GS
Topography from aerial photographs by multiple methods
Aerial photographs taken 1946. Field check 1950
Polyconic projection. 1927 North American datum
10,000-foot grid based on Washington coordinate system,
north zone
Dashed land lines indicate approximate location
Unchecked elevations are shown in brown
1000-meter Universal Transverse Mercator grid ticks,
zone 11, shown in blue



ROAD CLASSIFICATION
Medium-duty
Light-duty
Unimproved dirt
State Route



USGS
Historical File
Topographic Division

OCT 18 1973
NESPELEM, WASH.
N4800-W11845/15
1950
AMS 2280 III—SERIES V791

THIS MAP COMPLIES WITH NATIONAL MAP ACCURACY STANDARDS
FOR SALE BY U. S. GEOLOGICAL SURVEY, DENVER, COLORADO 80225 OR WASHINGTON, D. C. 20242
A FOLDER DESCRIBING TOPOGRAPHIC MAPS AND SYMBOLS IS AVAILABLE ON REQUEST

1720