

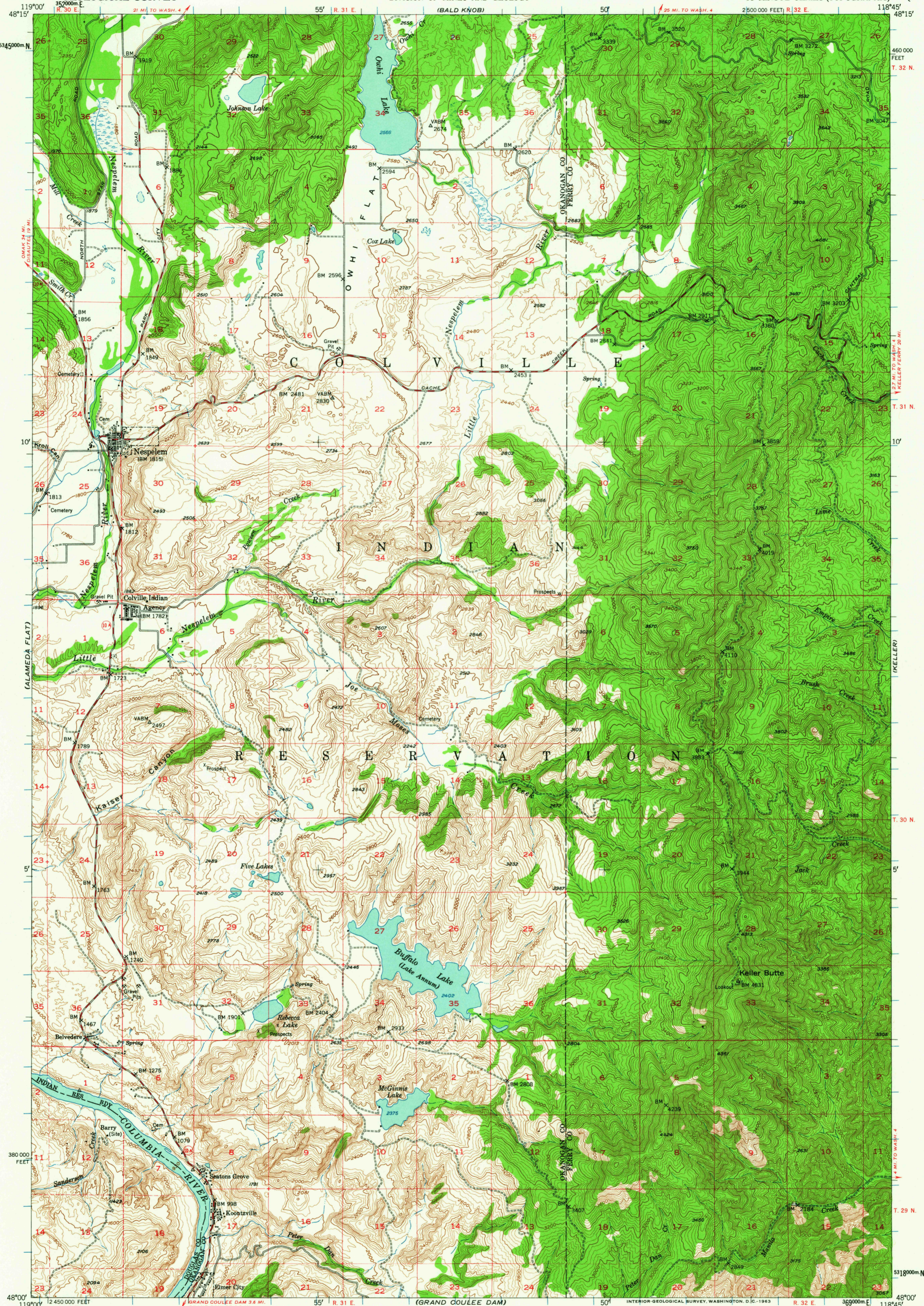
OSHAUTEU

UNITED STATES
DEPARTMENT OF THE INTERIOR
GEOLOGICAL SURVEY

STATE OF WASHINGTON
DEPARTMENT OF CONSERVATION AND DEVELOPMENT
DIVISION OF MINES AND GEOLOGY

NESPELEM QUADRANGLE
WASHINGTON
15 MINUTE SERIES (TOPOGRAPHIC)

SEVENTEENMILE MTN



Mapped, edited, and published by the Geological Survey

Control by USGS and USC&GS

Topography from aerial photographs by multiplex methods

Aerial photographs taken 1946. Field check 1950

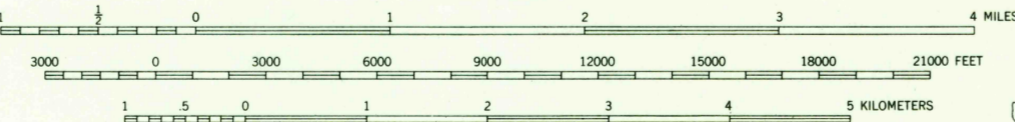
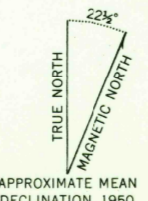
Polyconic projection. 1927 North American datum

10,000-foot grid based on Washington coordinate system, north zone

Dashed land lines indicate approximate location

Unchecked elevations are shown in brown

1000-meter Universal Transverse Mercator grid ticks, zone 11, shown in blue



SCALE 1:62500
CONTOUR INTERVAL 40 FEET
DOTTED LINES REPRESENT HALF-INTERVAL CONTOURS
CONTOUR INTERVAL ON RIVER SURFACE 5 FEET
DATUM IS MEAN SEA LEVEL



ROAD CLASSIFICATION
1963
Medium-duty ——— Light-duty ———
Unimproved dirt - - - - -
State Route ○

NESPELEM, WASH.
N4800-W11845/15

1950

THIS MAP COMPLIES WITH NATIONAL MAP ACCURACY STANDARDS
FOR SALE BY U.S. GEOLOGICAL SURVEY, DENVER 25, COLORADO OR WASHINGTON 25, D. C.
A FOLDER DESCRIBING TOPOGRAPHIC MAPS AND SYMBOLS IS AVAILABLE ON REQUEST

U.S.G.S. 1640
COPY
TOPOGRAPHIC DIVISION

NOV 19 1963