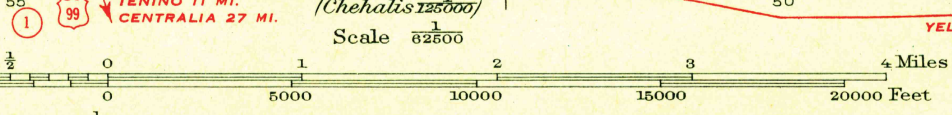
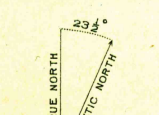


Topography by Gerald Fitzgerald G.W. Crippen  
E.L. Cliffe, Hiram DePuy, Jr., and C.P. Willis  
Surveyed in 1934  
Little Rock 8 MI.  
Rochester 15 MI.



Polyconic projection, 1927 North American datum  
5000 yard grid based upon U.S. zone system, G

ROUTES USUALLY TRAVELED  
HARD IMPERVIOUS SURFACES  
OTHER SURFACE IMPROVEMENTS  
U. S. ROUTE 1943  
STATE ROUTE

OLYMPIA, WASH.  
Edition of 1937  
reprinted 1943  
N4700-W12245/15

U. S. G. S.  
FILE COPY

USGS  
Historical File  
Topographic Division