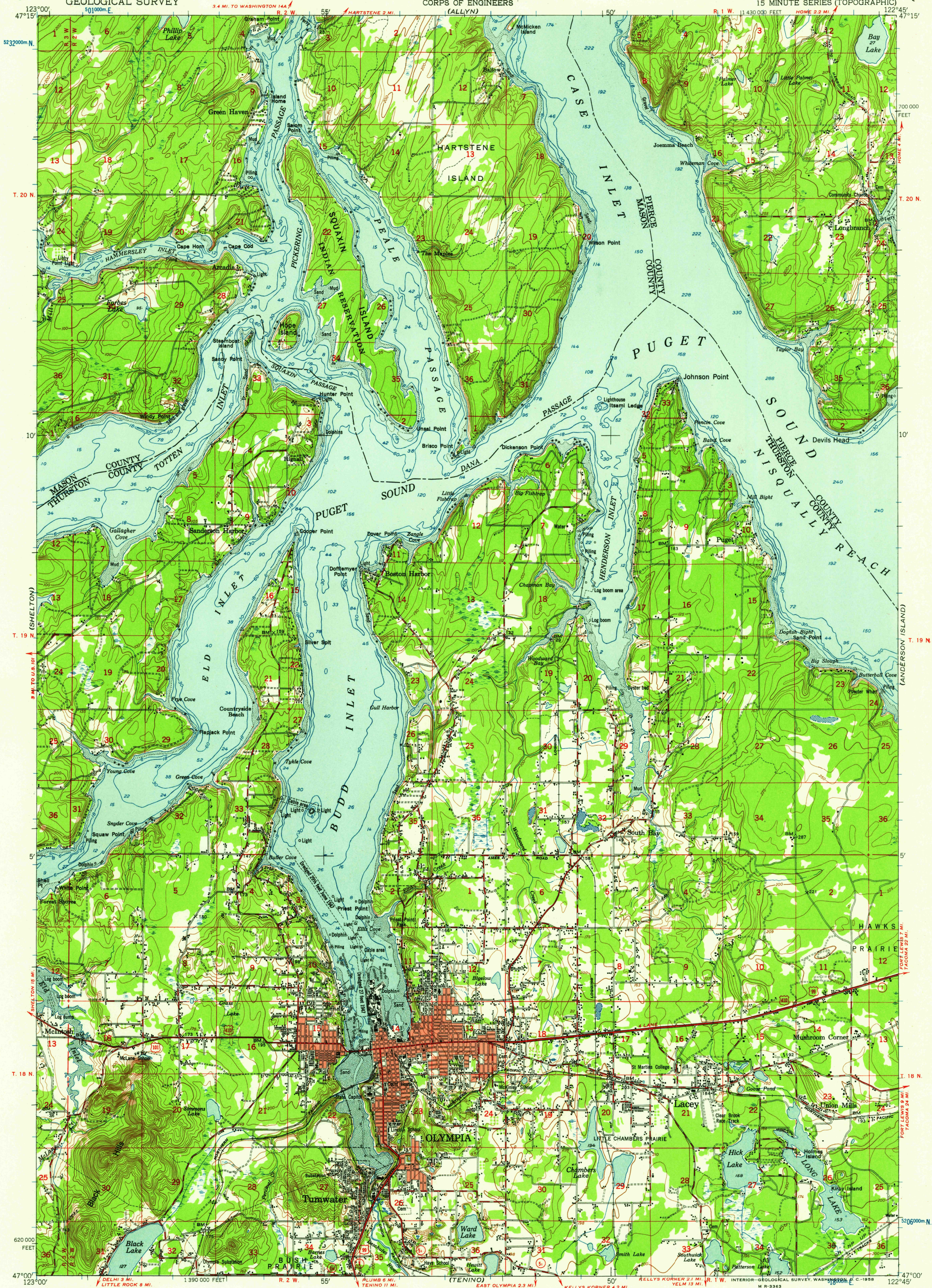


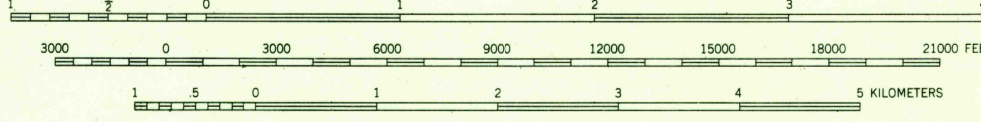
UNITED STATES
DEPARTMENT OF THE INTERIOR
GEOLOGICAL SURVEY

UNITED STATES
DEPARTMENT OF THE ARMY
CORPS OF ENGINEERS
(ALLYN)

OLYMPIA QUADRANGLE
WASHINGTON
15 MINUTE SERIES (TOPOGRAPHIC)



Map by the Geological Survey
Revised by the Army Map Service
Published for civil use by the Geological Survey
Control by USGS, USC&GS, and USCE
Topography by planetable surveys 1934
Planimetric detail revised from aerial photographs
taken 1947. Field check 1949
Hydrography compiled from USC&GS charts
Polyconic projection. 1927 North American datum
10,000-foot grid. based on Washington coordinate system,
south zone
1000-meter Universal Transverse Mercator grid ticks,
zone 10, shown in blue
Red tint indicates areas in which only
landmark buildings are shown
No distinction is made between barns, dwellings,
commercial and industrial buildings
Unchecked elevations are shown in brown



CONTOUR INTERVAL 25 FEET
DATUM IS MEAN SEA LEVEL
DEPTH CURVES AND SOUNDINGS IN FEET-DATUM IS MEAN LOWER LOW WATER
SHORELINE SHOWN REPRESENTS THE APPROXIMATE LINE OF MEAN HIGH WATER
THE MEAN RANGE OF TIDE IS APPROXIMATELY 13 FEET

FOR SALE BY U. S. GEOLOGICAL SURVEY, DENVER, 2, COLORADO OR WASHINGTON 25, D. C.
A FOLDER DESCRIBING TOPOGRAPHIC MAPS AND SYMBOLS IS AVAILABLE ON REQUEST

ROAD CLASSIFICATION
Heavy-duty ——— Light-duty ———
Medium-duty ——— Unimproved dirt ———
U. S. Route ——— State Route ———
WASHINGTON
QUADRANGLE LOCATION
OLYMPIA, WASH.
N4700-W12245/15
USGS
Historical File
Topographic Division
1949

U.S.G.S.
FILE COPY
TOPOGRAPHIC DIVISION

JUL 2 8 1958

1840