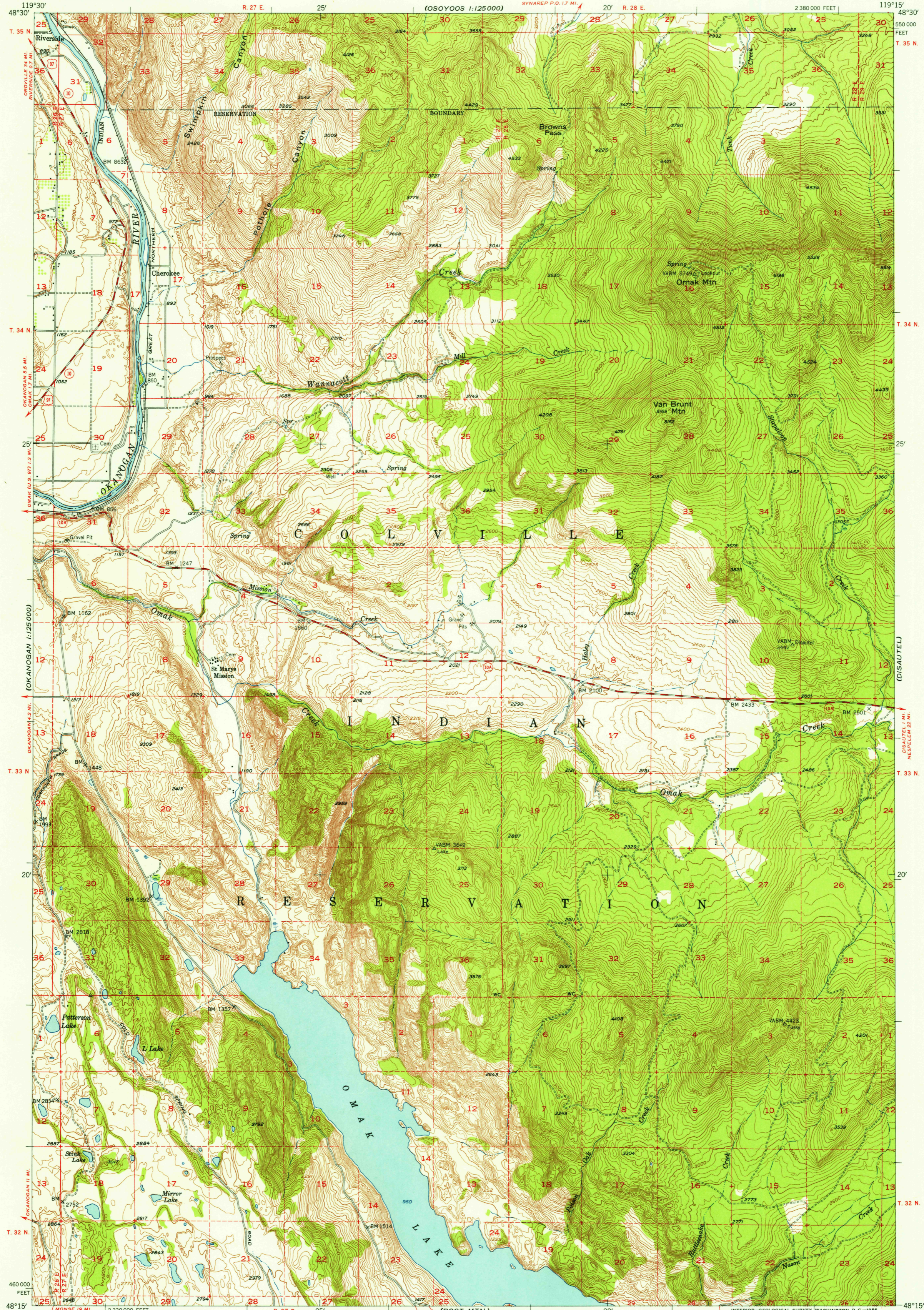


CHOPAKA
1:125000

UNITED STATES
DEPARTMENT OF THE INTERIOR
GEOLOGICAL SURVEY

OMAK LAKE QUADRANGLE
WASHINGTON—OKANOGAN CO.
15 MINUTE SERIES (TOPOGRAPHIC)

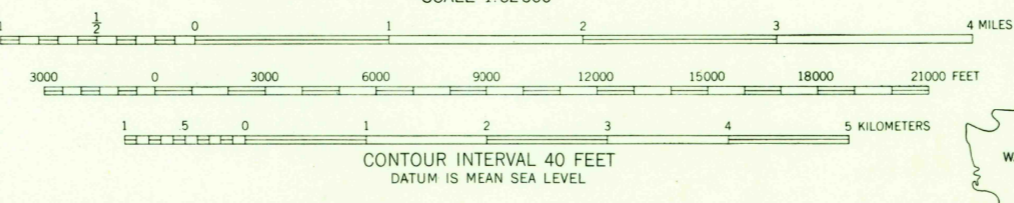
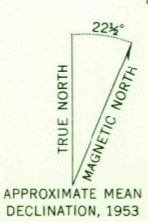
(OSOYOOS)
1:125000



U.S.G.S.
FILE COPY
TOPOGRAPHIC DIVISION

U.S.G.S.
FILE COPY
TOPOGRAPHIC DIVISION

Maped, edited, and published by the Geological Survey
Control by USGS and USC&GS
Topography from aerial photographs by multiplex methods
Aerial photographs taken 1946. Field check 1953
Polycyclic projection. 1927 North American datum
10,000-foot grid based on Washington coordinate system,
north zone
Dashed land lines indicate approximate locations
Unchecked elevations are shown in brown



ROAD CLASSIFICATION
Heavy-duty ——— Light-duty ———
Medium-duty ——— Unimproved dirt - - - - -
U. S. Route (circle with number) State Route (circle with number)



USGS OMAK LAKE, WASH.
Historical File #4815—W11915/15
Topographic Division 1953

THIS MAP COMPLIES WITH NATIONAL MAP ACCURACY STANDARDS
FOR SALE BY U. S. GEOLOGICAL SURVEY, FEDERAL CENTER, DENVER, COLORADO OR WASHINGTON 25, D. C.
A FOLDER DESCRIBING TOPOGRAPHIC MAPS AND SYMBOLS IS AVAILABLE ON REQUEST

FEB 9 1956

2605