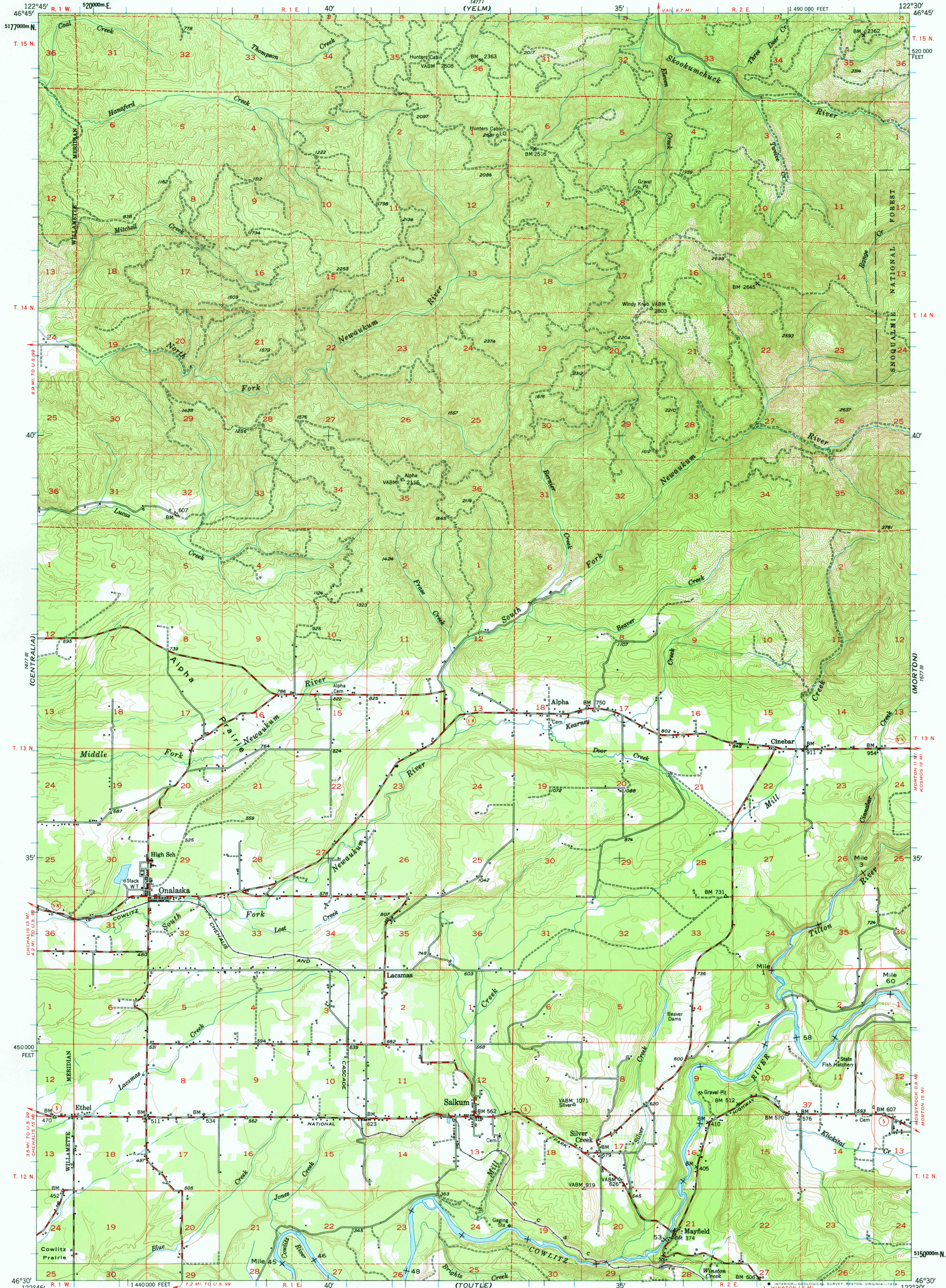


122°45' W (TENN)

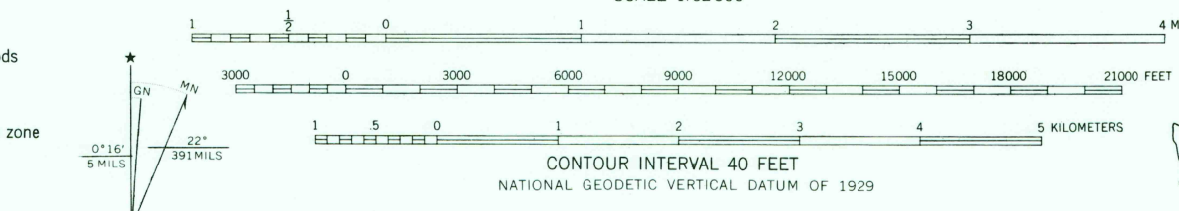
UNITED STATES  
DEPARTMENT OF THE INTERIOR  
GEOLOGICAL SURVEY

ONALASKA QUADRANGLE  
WASHINGTON—LEWIS CO.  
15 MINUTE SERIES (TOPOGRAPHIC)

122°30' W (OHOP VALLEY)



Mapped, edited, and published by the Geological Survey  
Control by USGS and USC&GS  
Topography from aerial photographs by photogrammetric methods  
Aerial photographs taken 1952. Field check 1954  
Polyconic projection. 1927 North American datum  
10,000-foot grid based on Washington coordinate system, south zone  
Dashed land lines indicate approximate locations  
Unchecked elevations are shown in brown  
1000-meter Universal Transverse Mercator grid ticks,  
zone 10, shown in blue



ONALASKA, WASH.  
N4630-W12230/15  
1954

USGS  
Historical File  
Topographic Division

1800  
FEB 08 1978