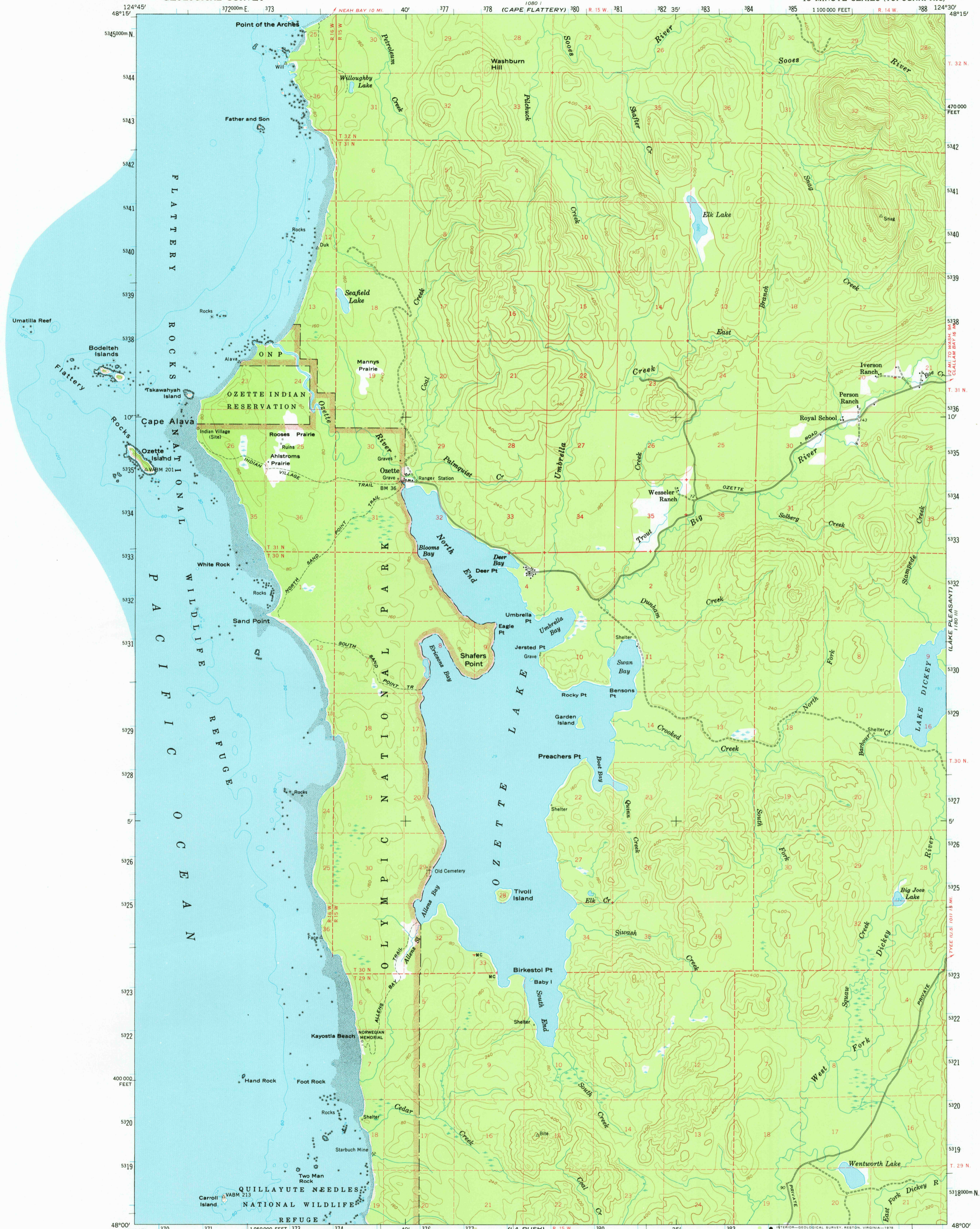
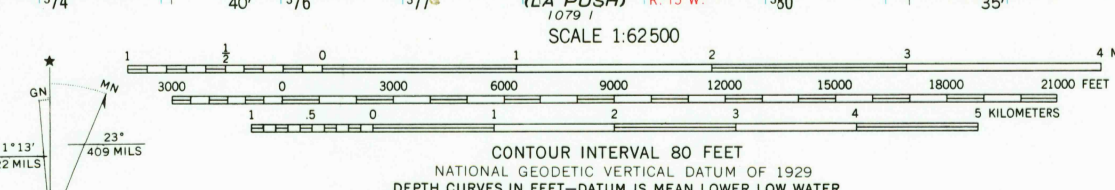


1:800 V.
(CLALLAM BAY)



Mapped, edited, and published by the Geological Survey
Control by USGS, USC&GS, and USCE
Topography from aerial photographs by photogrammetric methods
Aerial photographs taken 1952 and 1955
Advance field check 1956
Hydrography compiled from USC&GS chart 6265 (1956)
and hydrographic surveys 1930
Polyconic projection. 1927 North American datum
10,000-foot grid based on Washington coordinate system,
north zone
1000-meter Universal Transverse Mercator grid ticks,
zone 10, shown in blue
Dashed land lines indicate approximate locations
Unchecked elevations are shown in brown



ROAD CLASSIFICATION
Light duty ——— Unimproved dirt - - - - -
QUADRANGLE LOCATION
WASHINGTON
OZETTE LAKE, WASH.
N4800—W12430/15
1956
AMS 1080 II—SERIES V791

THIS MAP COMPLIES WITH NATIONAL MAP ACCURACY STANDARDS
FOR SALE BY U.S. GEOLOGICAL SURVEY, DENVER, COLORADO 80225, OR RESTON, VIRGINIA 22092
A FOLDER DESCRIBING TOPOGRAPHIC MAPS AND SYMBOLS IS AVAILABLE ON REQUEST