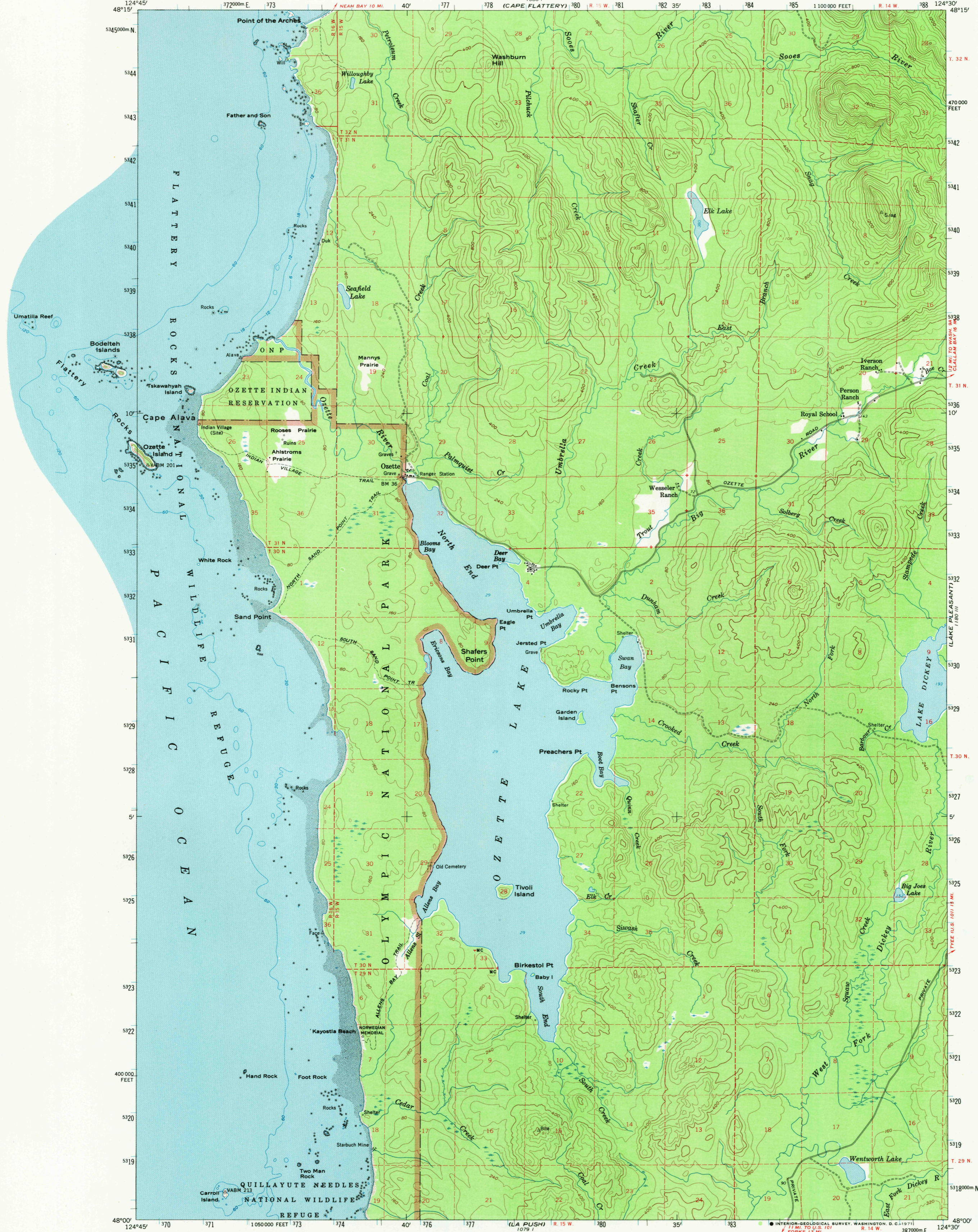
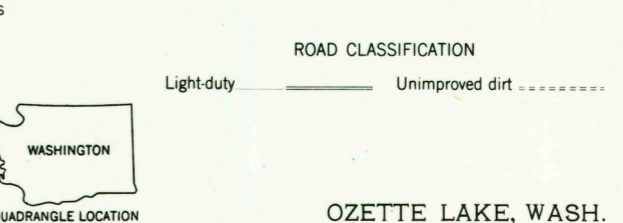
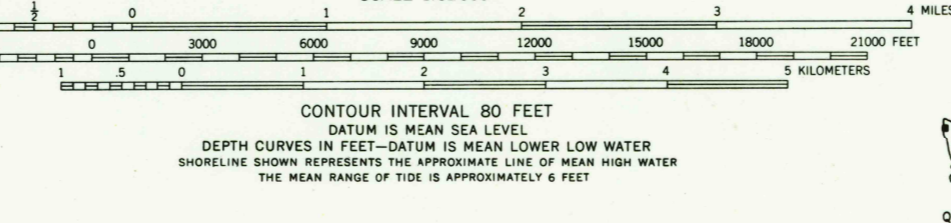
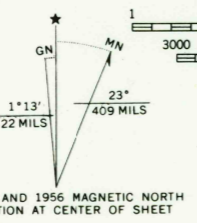


1:80,000 (CLALLAM BAY)



Mapped, edited, and published by the Geological Survey
Control by USGS, USC&GS, and USCE
Topography from aerial photographs by photogrammetric methods
Aerial photographs taken 1952 and 1955
Advance field check 1956
Hydrography compiled from USC&GS chart 6265 (1956)
and hydrographic surveys 1930
Polyconic projection. 1927 North American datum
10,000-foot grid based on Washington coordinate system,
north zone
1000-meter Universal Transverse Mercator grid ticks,
zone 10, shown in blue
Dashed land lines indicate approximate locations
Unchecked elevations are shown in brown



FOR SALE BY U.S. GEOLOGICAL SURVEY, DENVER, COLORADO 80225 OR WASHINGTON, D. C. 20242
A FOLDER DESCRIBING TOPOGRAPHIC MAPS AND SYMBOLS IS AVAILABLE ON REQUEST

USGS
Historical Files
Topographic Division

ROAD CLASSIFICATION
Light-duty ——— Unimproved dirt - - - - -
OZETTE LAKE, WASH.
N 4800—W 12430/15
1956
AMS 1080 II—SERIES V791

U.S.G.S.
FILE COPY
TOPOGRAPHIC DIVISION

8960
JUN 1 1971