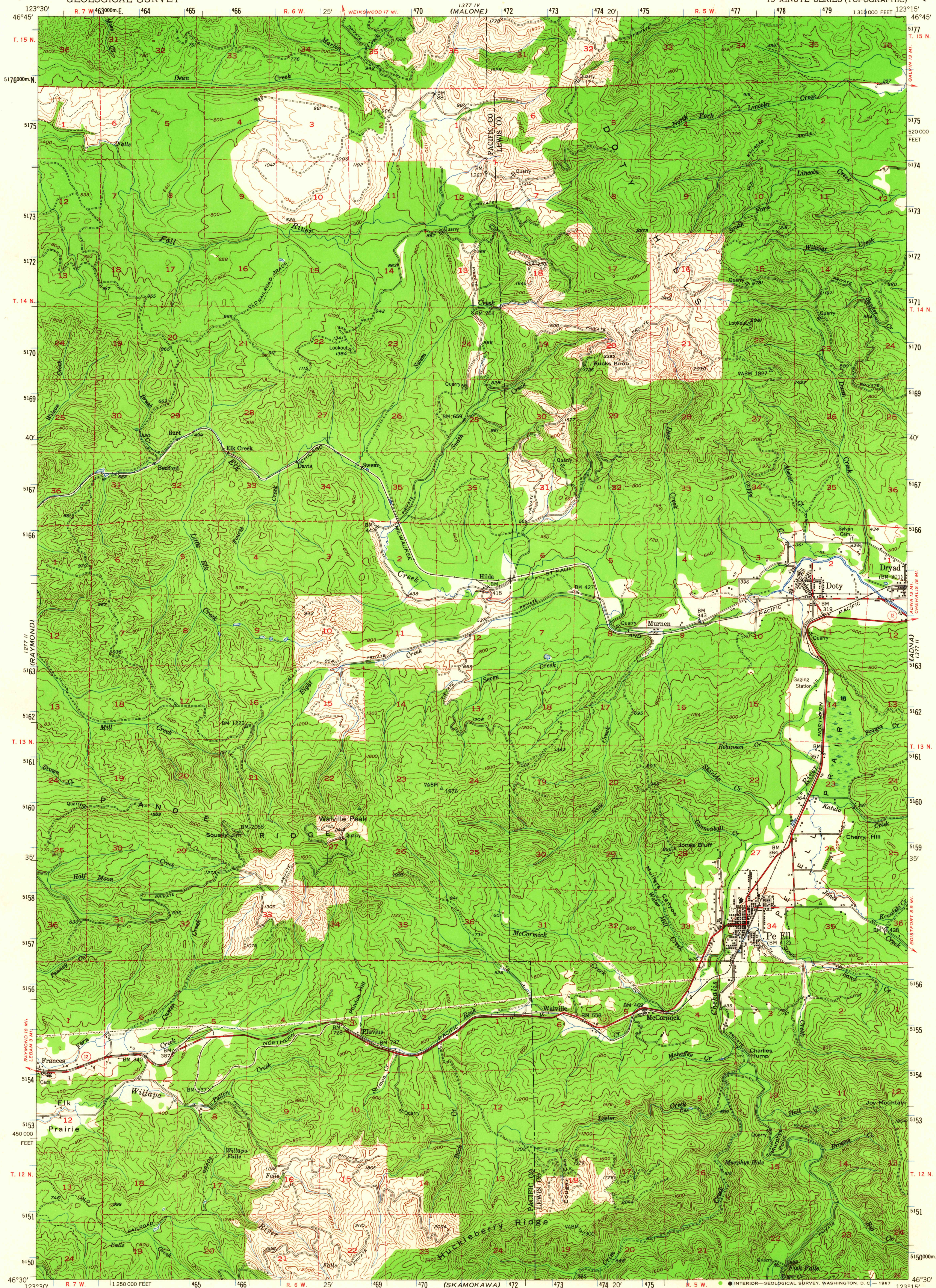


UNITED STATES
DEPARTMENT OF THE INTERIOR
GEOLOGICAL SURVEY

PE ELL QUADRANGLE
WASHINGTON
15 MINUTE SERIES (TOPOGRAPHIC)



Maped, edited, and published by the Geological Survey

Control by USGS, USC&GS, and USCE

Topography from aerial photographs by multiplex methods

Aerial photographs taken 1951. Field check 1953

Polyconic projection. 1927 North American datum

10,000-foot grid based on Washington coordinate system, south zone

Dashed land lines indicate approximate locations

Unchecked elevations are shown in brown

1000-meter Universal Transverse Mercator grid ticks,
zone 10, shown in blue

UTM GRID AND 1983 MAGNETIC NORTH
DECLINATION AT CENTER OF SHEET

SCALE 1:62,500

CONTOUR INTERVAL 80 FEET
DATUM IS MEAN SEA LEVEL

ROAD CLASSIFICATION

Heavy-duty 4 LANE 6 LANE Light-duty

Medium-duty 4 LANE 6 LANE Unimproved dirt

U. S. Route State Route

U.S.G.S.
WASHINGTON

FILE COPY
TOPOGRAPHIC DIVISION

PE ELL, WASH.
N4630-W12315/15

1953

AMS 1377 III--SERIES V791

THIS MAP COMPLIES WITH NATIONAL MAP ACCURACY STANDARDS
FOR SALE BY U. S. GEOLOGICAL SURVEY, DENVER, COLORADO 80225 OR WASHINGTON, D. C. 20508
A FOLDER DESCRIBING TOPOGRAPHIC MAPS AND SYMBOLS IS AVAILABLE ON REQUEST

USGS
Historical File
Topographic Division

2815

FEB 1 1968