

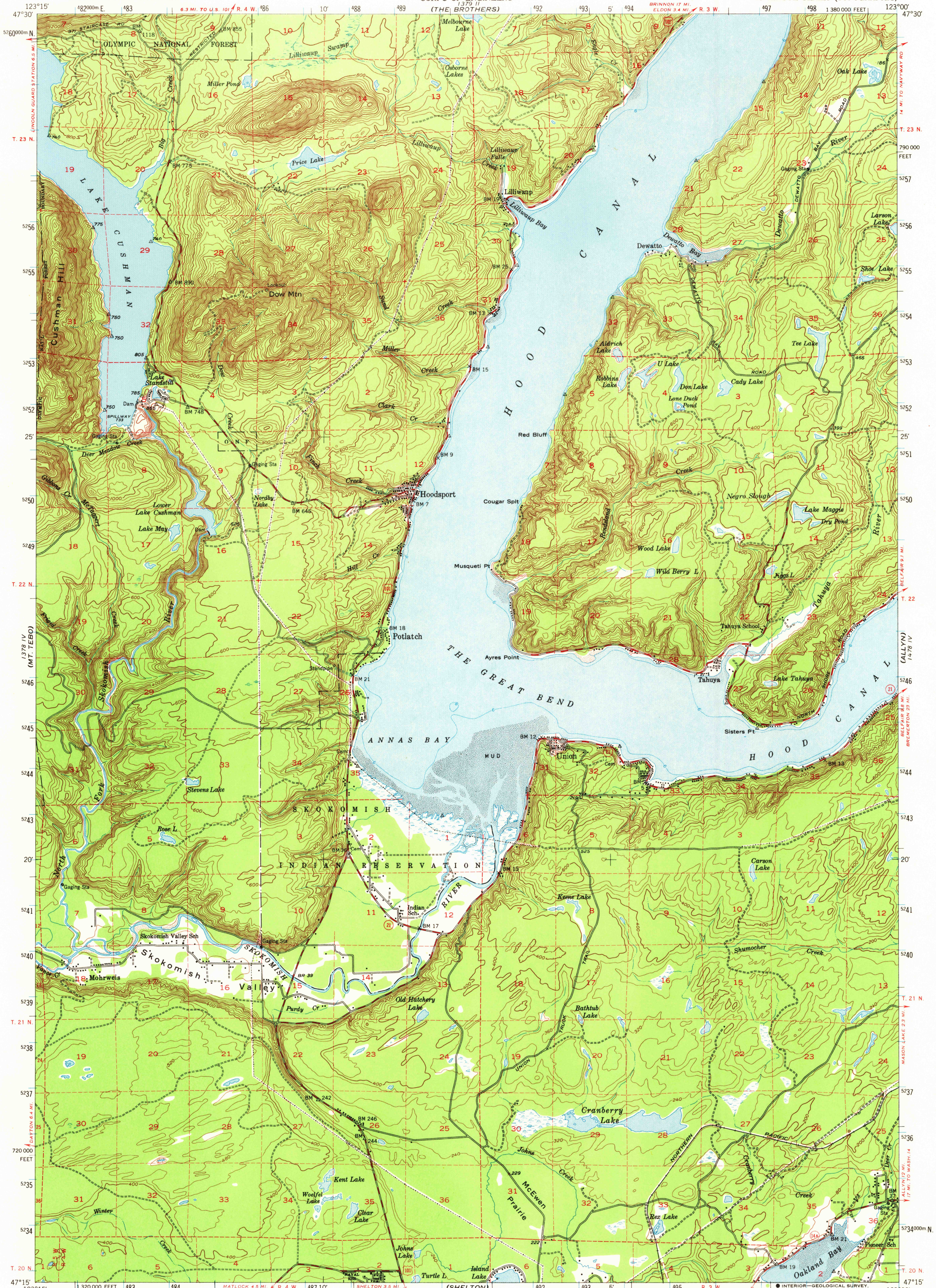
173° 11' (MT. STEEL)

UNITED STATES
DEPARTMENT OF THE INTERIOR
GEOLOGICAL SURVEY

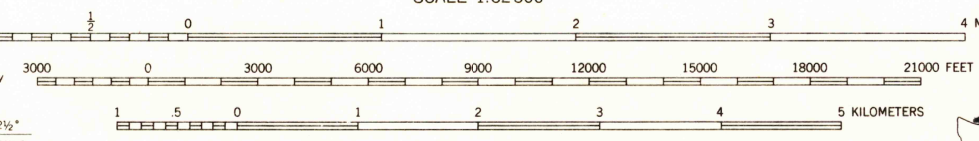
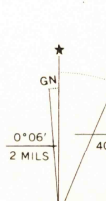
UNITED STATES
DEPARTMENT OF THE ARMY
CORPS OF ENGINEERS
(THE BROTHERS)

POTLATCH QUADRANGLE
WASHINGTON-MASON CO.
15 MINUTE SERIES (TOPOGRAPHIC)

147° 11' (PT. MISERY)



Maped by the Army Map Service
Edited and published by the Geological Survey
Control by USGS, USC&GS, and USCE
Topography from aerial photographs by photogrammetric methods
Aerial photographs taken 1937. Field check & culture revision 1952
Hydrography compiled from USC&GS chart 6460
Polyconic projection. 1927 North American datum
10,000-foot grid based on Washington coordinate system, south zone
Dashed land lines indicate approximate locations
1000-meter Universal Transverse Mercator grid ticks,
zone 10, shown in blue



CONTOUR INTERVAL 40 FEET
DATUM IS MEAN SEA LEVEL
DEPTH CURVES IN FEET—DATUM IS MEAN LOWER LOW WATER
SHORELINE SHOWN REPRESENTS THE APPROXIMATE LINE OF MEAN HIGH WATER
THE AVERAGE RANGE OF TIDE IS APPROXIMATELY 8 FEET

U.S.G.S.
FILE COPY
TOPOGRAPHIC DIVISION

ROAD CLASSIFICATION
1964
Medium-duty
Light-duty
Unimproved dirt
U.S. Route
State Route

POTLATCH, WASH.
N4715-W12300/15

1952

AMS 1378 I-SERIES V791

FOR SALE BY U.S. GEOLOGICAL SURVEY, DENVER, COLORADO 80225 OR WASHINGTON, D. C. 20540
A FOLDER DESCRIBING TOPOGRAPHIC MAPS AND SYMBOLS IS AVAILABLE ON REQUEST

OCT 15 1969